

CITY OF MAPLE HEIGHTS

# EVOLVING SOUTHGATE AREA REDEVELOPMENT PLAN

## APPENDIX D: COMMUNITY MEETING #1 ACTIVITY BOARDS

**Accepted July 2, 2025**



Cuyahoga  
**COUNTY PLANNING**  
Commission



# Vision and Guiding Principles

City of Maple Heights  
Evolving Southgate Area  
Redevelopment Plan

The vision contains broad ideas and principles that help guide more specific action steps. Below is a statement that describes what has been envisioned for the area in and around Southgate USA.

## EVOLVING SOUTHGATE AREA VISION

The Southgate Area will be revitalized to become an accessible, **connected**, and walkable mixed-use district that: enhances the shopping experience; incorporates **sustainable** practices; provides **livable** and diverse housing options; and creates a **vibrant, safe & welcoming** area for all.

## DOES THE STATEMENT ABOVE MATCH YOUR VISION FOR THE SOUTHGATE AREA?

Instructions: If you agree, **place a dot** in the ‘Agree’ box, if you disagree, **place a dot** in the ‘Disagree’ box.

AGREE



DISAGREE



## DID WE MISS ANYTHING?

Instructions: **Write** your comments and **place a sticky note** in the box below.

MY VISION FOR THE SOUTHGATE AREA IS ....

# Vision and Guiding Principles

City of Maple Heights  
Evolving Southgate Area  
Redevelopment Plan

Please read the guiding principles below and tell us what you think.

**DO THE GUIDING PRINCIPLES MATCH YOUR PRINCIPLES FOR THE FUTURE OF THE SOUTHGATE AREA?**

Instructions: If you agree, **place a dot** in the ‘Agree’ box, if you disagree, **place a dot** in the ‘Disagree’ box. If we missed anything, **write** your comments and **place a sticky note** in the gray box.

**Connected**

— to the surrounding communities with accessible and safe pedestrian and bicycle paths, more enjoyable transit stations, clearer wayfinding, and safer streets for all users.



**Livable**

— for families and households of various incomes, sizes, and arrangements.



**Sustainable**

— for the environment with greater investment in green infrastructure and open spaces for public gatherings, and well-maintained landscaping.



**Vibrant**

— with more local businesses, programming, and events.



**Safe & Welcoming**

— for residents and visitors through enhanced safety and comfort elements such as increased security, inclusive and ADA-accessible streetscape amenities and gathering places, and improved development design guidelines.



PLACE STICKY NOTES HERE




# Evolving Southgate Area Redevelopment Plan - Apartments

Residential  
Typologies

Below are images that represent the different potential development typologies for the Evolving Southgate Area Redevelopment Plan. If this type of improvement is proposed, which potential option would you like to see? Please consider the scale, materials, design and appropriateness for the Evolving Southgate Area Redevelopment Plan.

Instructions: **PLACE A DOT** in the gray box under the image that corresponds with your preferred improvement option. Tell us why you made your selection on a sticky note and **PLACE STICKY NOTE** in the large gray box below.

1



PLACE DOTS HERE

2



PLACE DOTS HERE

3



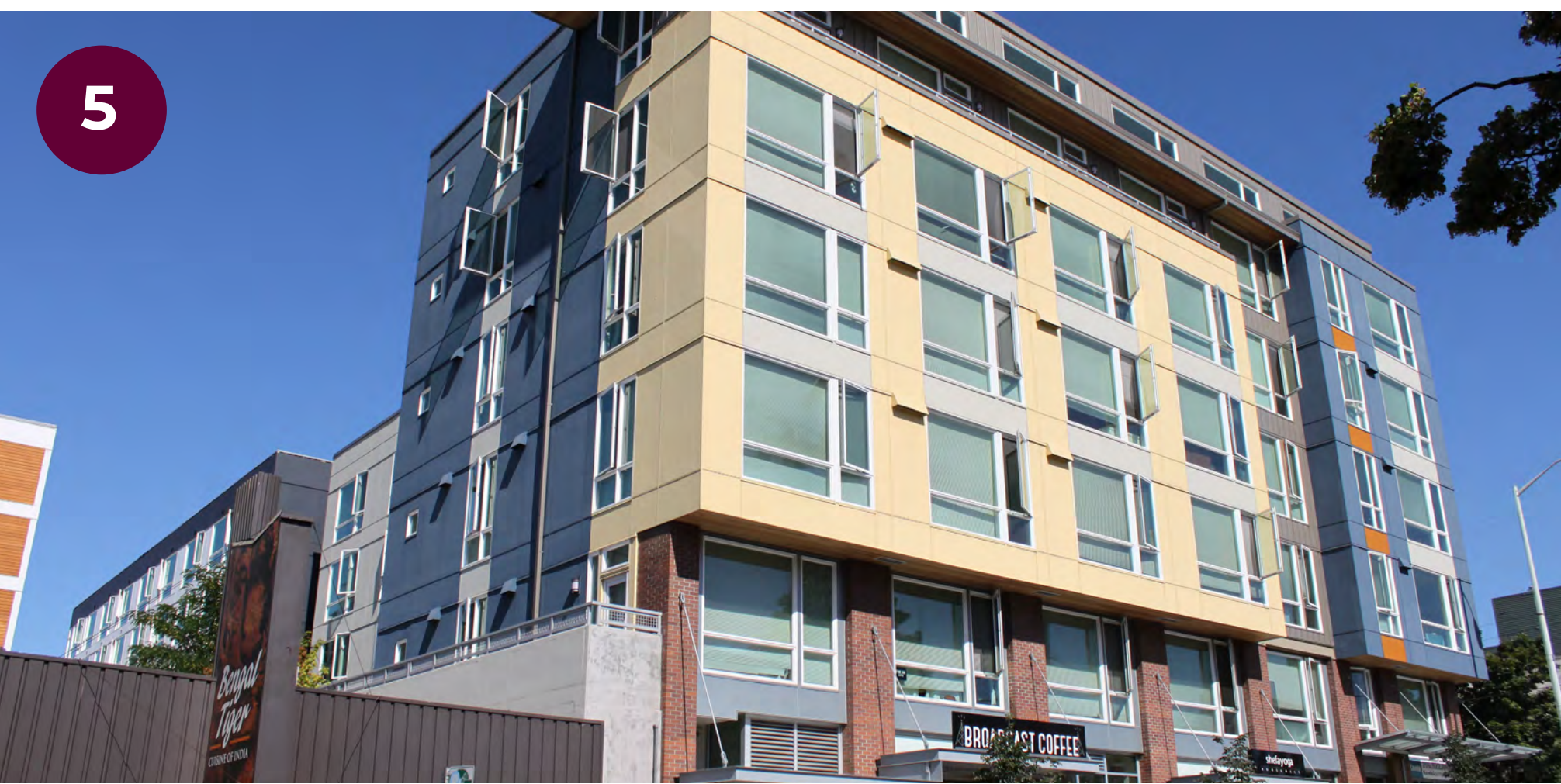
PLACE DOTS HERE

4



PLACE DOTS HERE

5



PLACE DOTS HERE

6



PLACE DOTS HERE

PLACE STICKY NOTES HERE

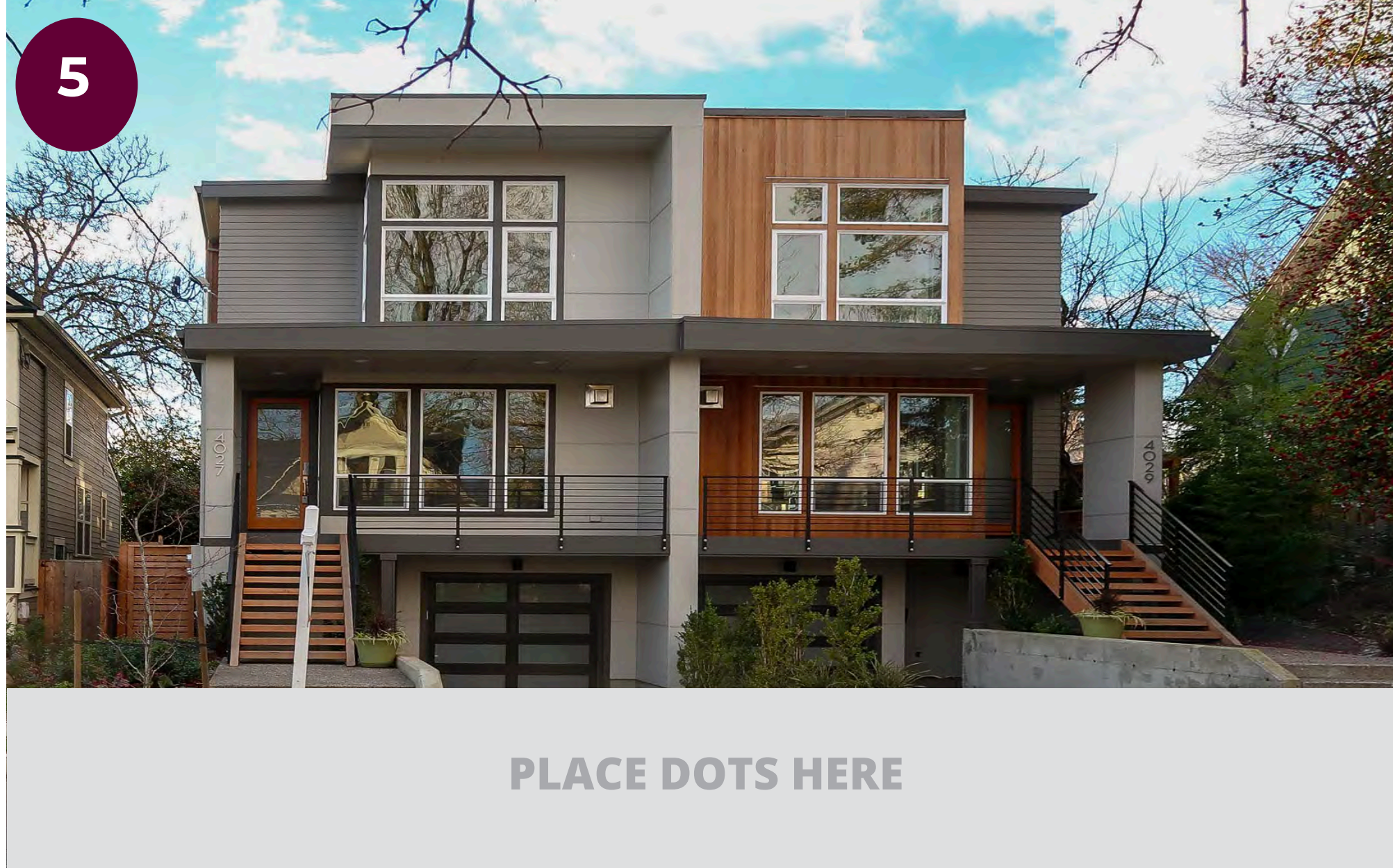


# Evolving Southgate Area Redevelopment Plan - Town House

Residential Typologies

Below are images that represent the different potential development typologies for the Evolving Southgate Area Redevelopment Plan. If this type of improvement is proposed, which potential option would you like to see? Please consider the scale, materials, design and appropriateness for the Evolving Southgate Area Redevelopment Plan.

Instructions: **PLACE A DOT** in the gray box under the image that corresponds with your preferred improvement option. Tell us why you made your selection on a sticky note and **PLACE STICKY NOTE** in the large gray box below.



PLACE STICKY NOTES HERE

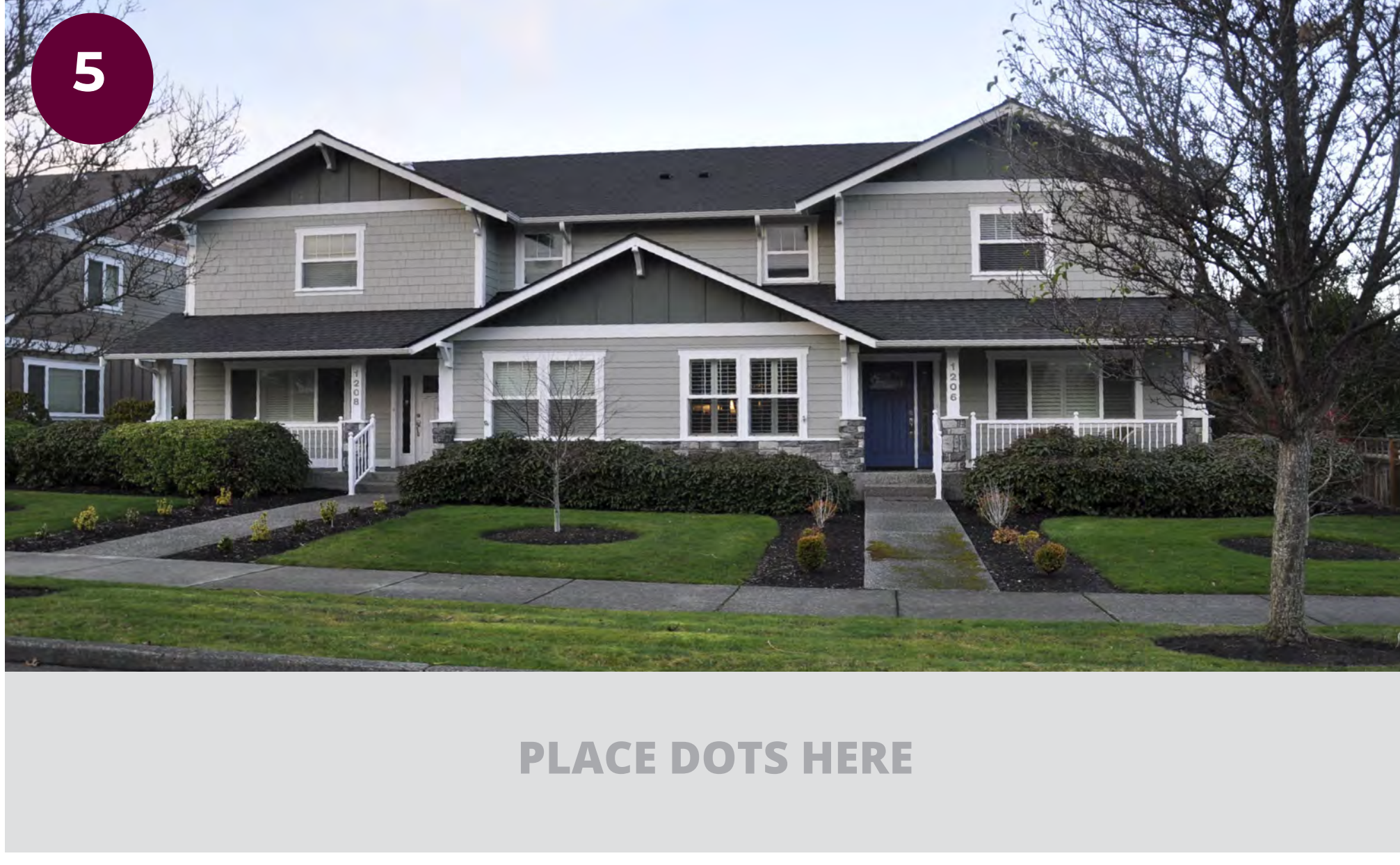
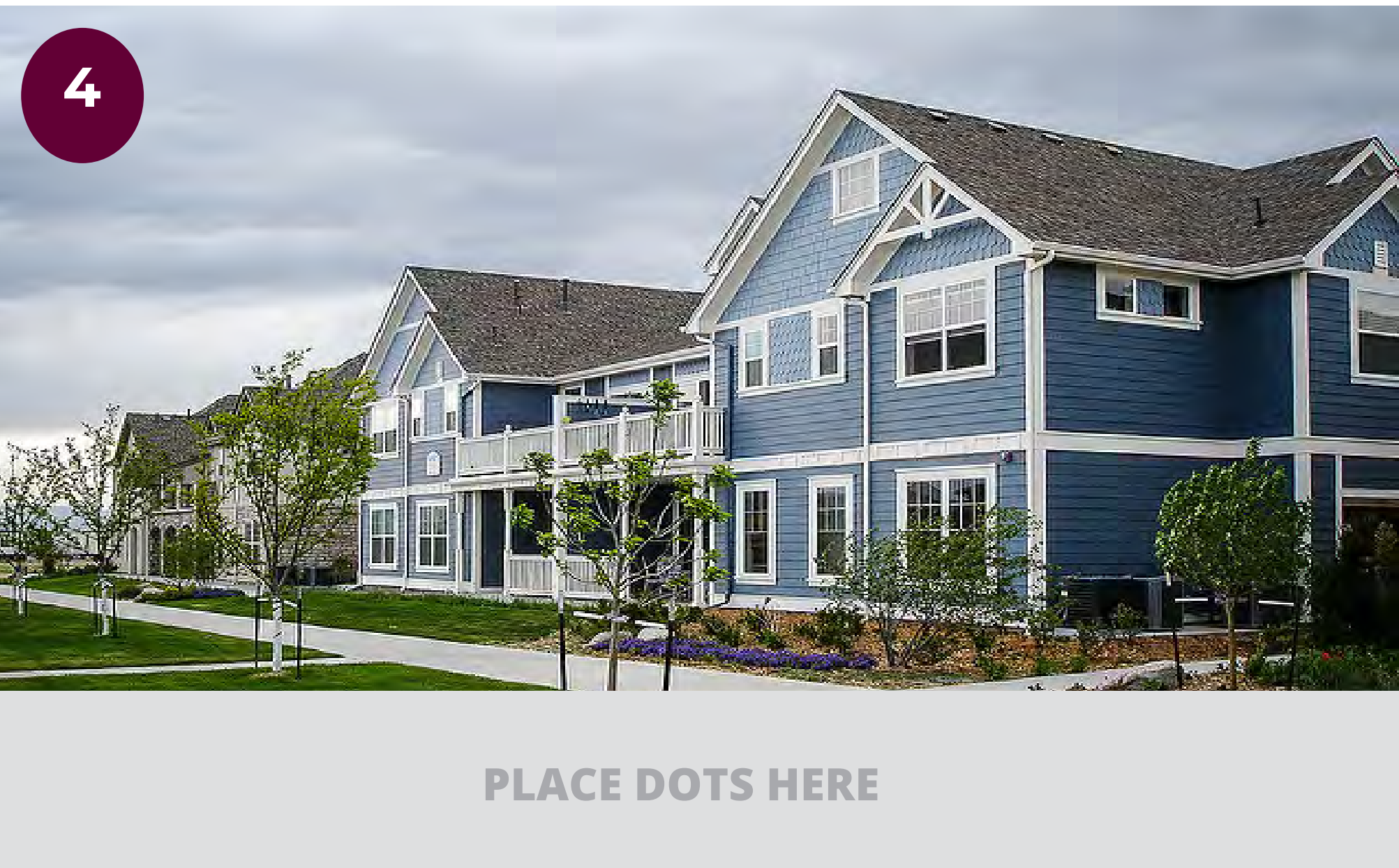
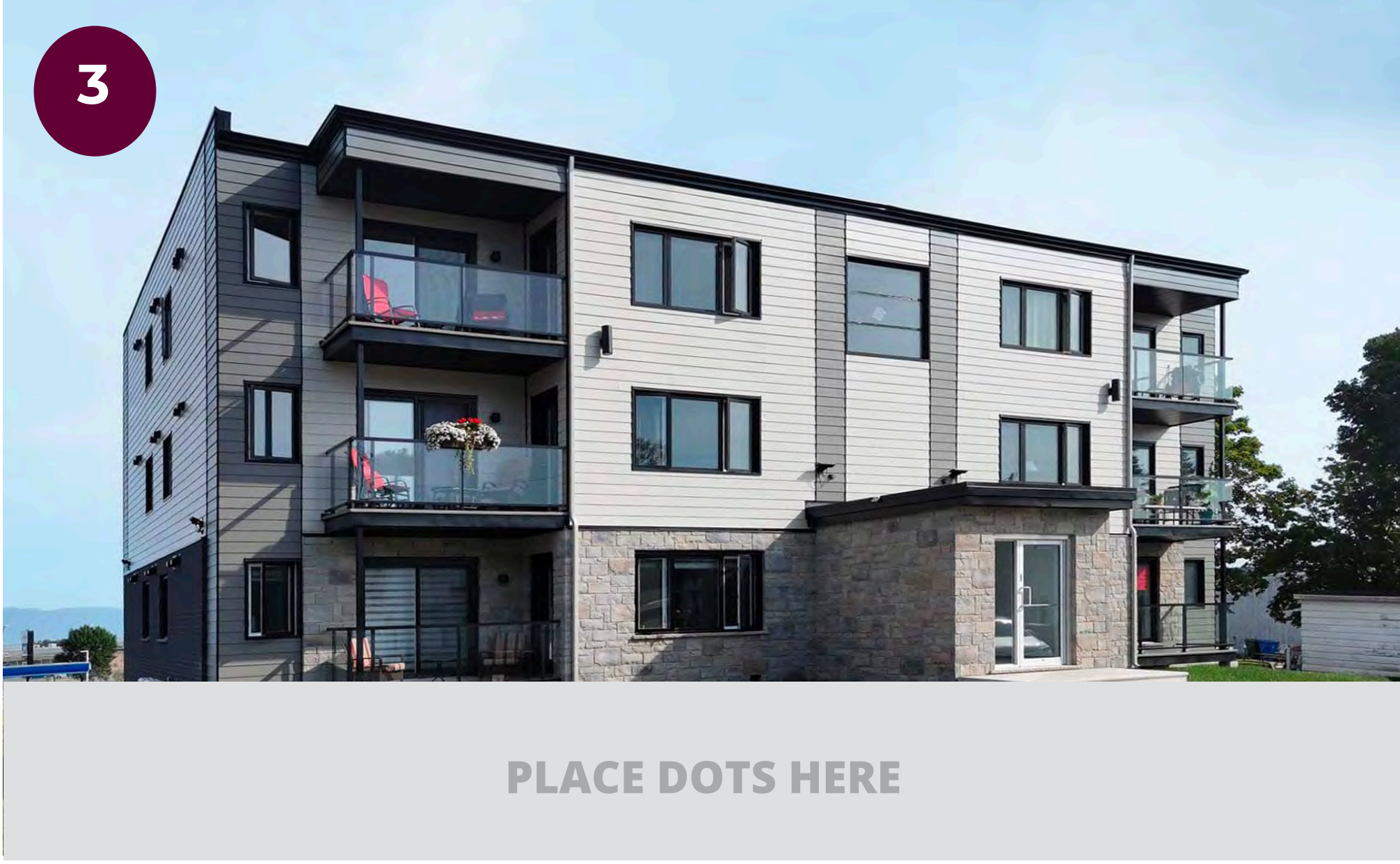


# Evolving Area Southgate Redevelopment Plan - Middle Homes

Residential  
Typologies

Below are images that represent the different potential development typologies for the Evolving Southgate Area Redevelopment Plan. If this type of improvement is proposed, which potential option would you like to see? Please consider the scale, materials, design and appropriateness for the Evolving Southgate Area Redevelopment Plan.

Instructions: **PLACE A DOT** in the gray box under the image that corresponds with your preferred improvement option. Tell us why you made your selection on a sticky note and **PLACE STICKY NOTE** in the large gray box below.



PLACE STICKY NOTES HERE



# Evolving Southgate Area Redevelopment Plan - Commercial

Below are images that represent the different potential development typologies for the Evolving Southgate Area Redevelopment Plan. If this type of improvement is proposed, which potential option would you like to see? Please consider the scale, materials, design and appropriateness for the Evolving Southgate Area Redevelopment Plan.

Instructions: **PLACE A DOT** in the gray box under the image that corresponds with your preferred improvement option. Tell us why you made your selection on a sticky note and **PLACE STICKY NOTE** in the large gray box below.

1



PLACE DOTS HERE

2



PLACE DOTS HERE

3



PLACE DOTS HERE

4



PLACE DOTS HERE

5



PLACE DOTS HERE

6



PLACE DOTS HERE

PLACE STICKY NOTES HERE




# Evolving Southgate Area Redevelopment Plan - Public Space

Below are images that represent the different potential development typologies for the Evolving Southgate Area Redevelopment Plan. If this type of improvement is proposed, which potential option would you like to see? Please consider the scale, materials, design and appropriateness for the Evolving Southgate Area Redevelopment Plan.

Instructions: **PLACE A DOT** in the gray box under the image that corresponds with your preferred improvement option. Tell us why you made your selection on a sticky note and **PLACE STICKY NOTE** in the large gray box below.

1



PLACE DOTS HERE

2




PLACE DOTS HERE

3



PLACE DOTS HERE

4



PLACE DOTS HERE

5



PLACE DOTS HERE

6



PLACE DOTS HERE

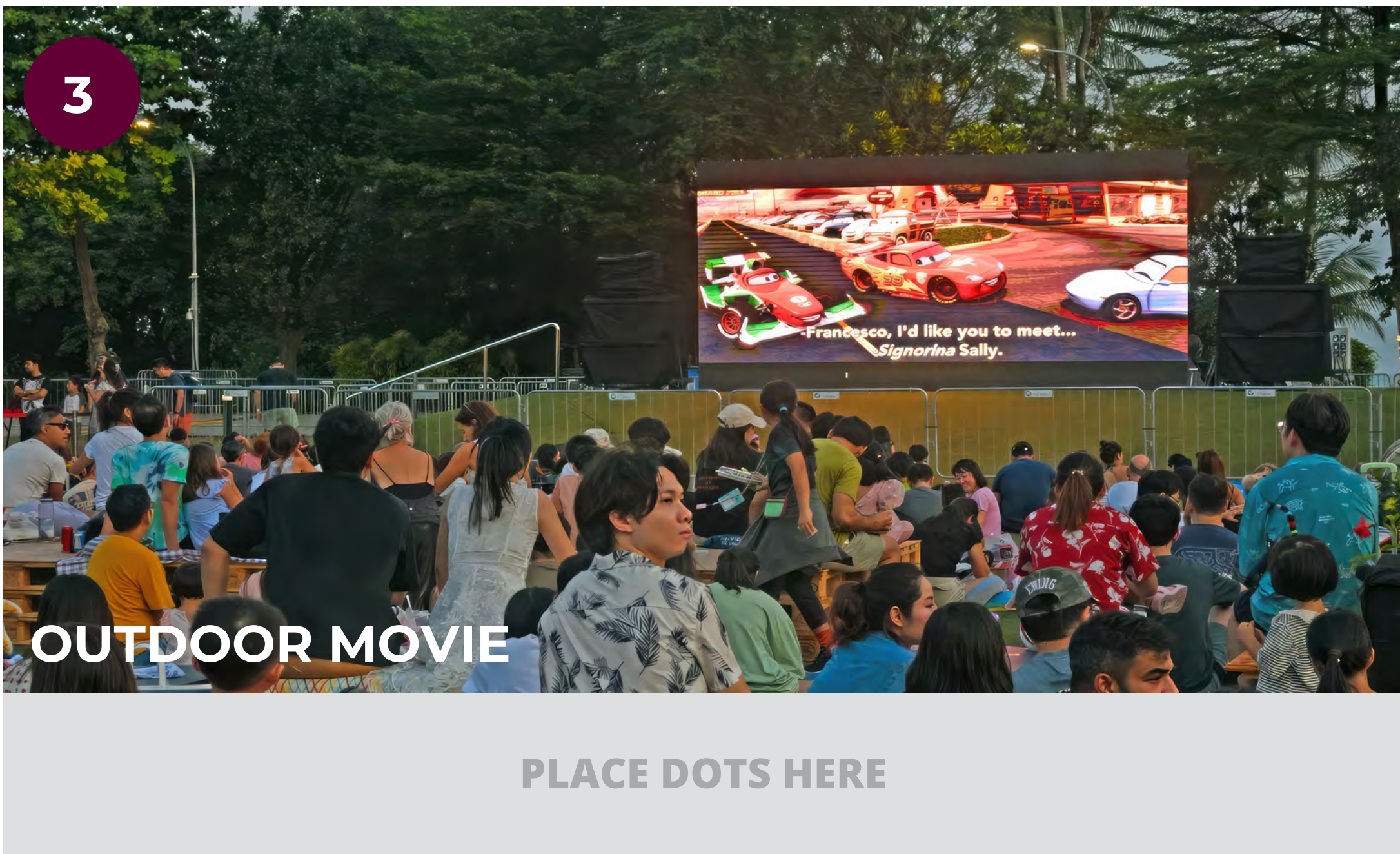
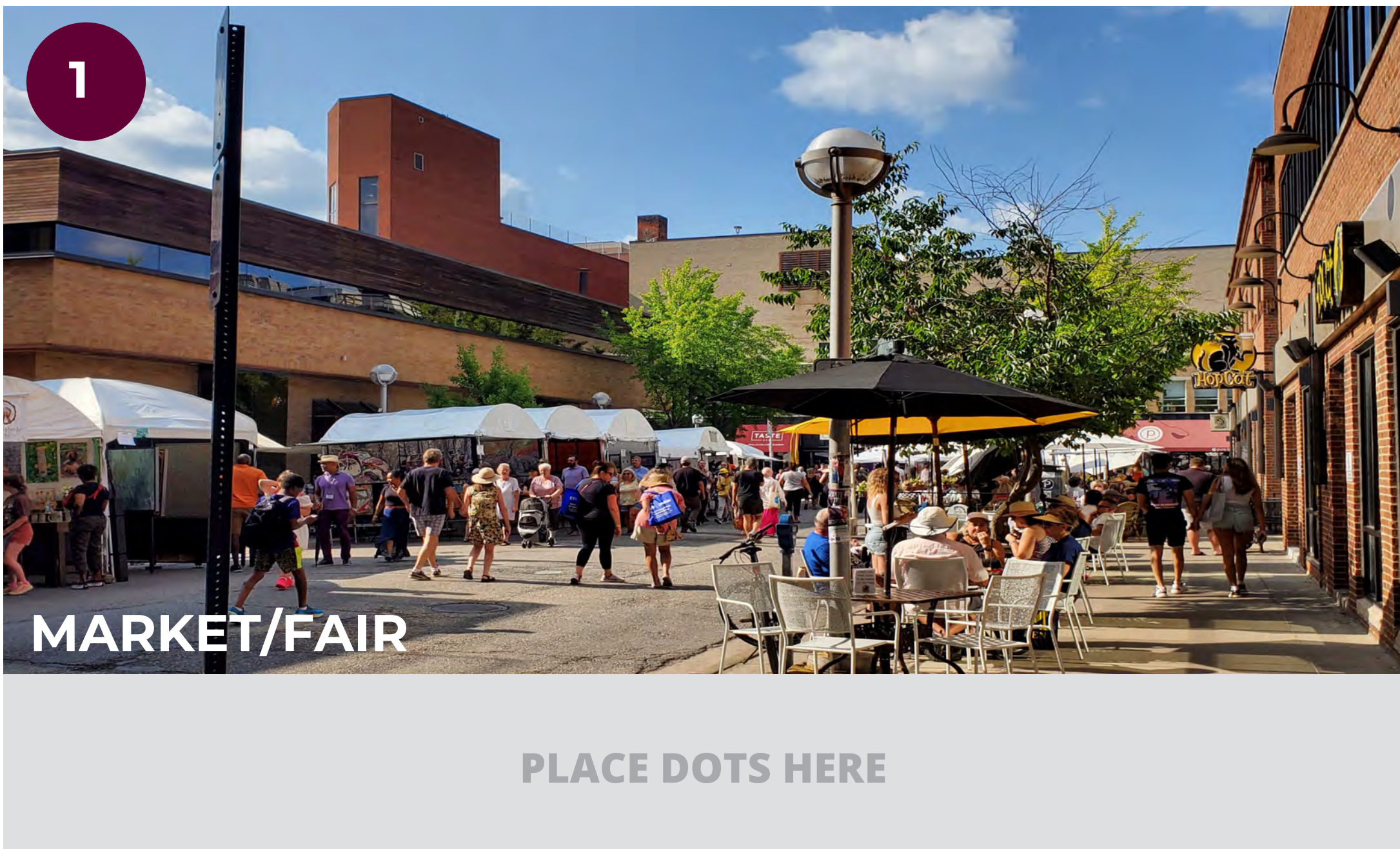
PLACE STICKY NOTES HERE



# Evolving Southgate Area Redevelopment Plan - Programming

*Below are images that represent the different potential improvements for the Evolving Southgate Area Redevelopment Plan. If this type of improvement is proposed, which potential option would you like to see? Importantly, look at each option for their scale, materials, design, feasibility, context, and ability to meet overall project goals for the Evolving Southgate Area Redevelopment Plan.*

Please review the examples below. **PLACE A DOT** on the image that corresponds with your preferred improvement option. Additionally, write any comments on sticky notes and place them in the grey box below.

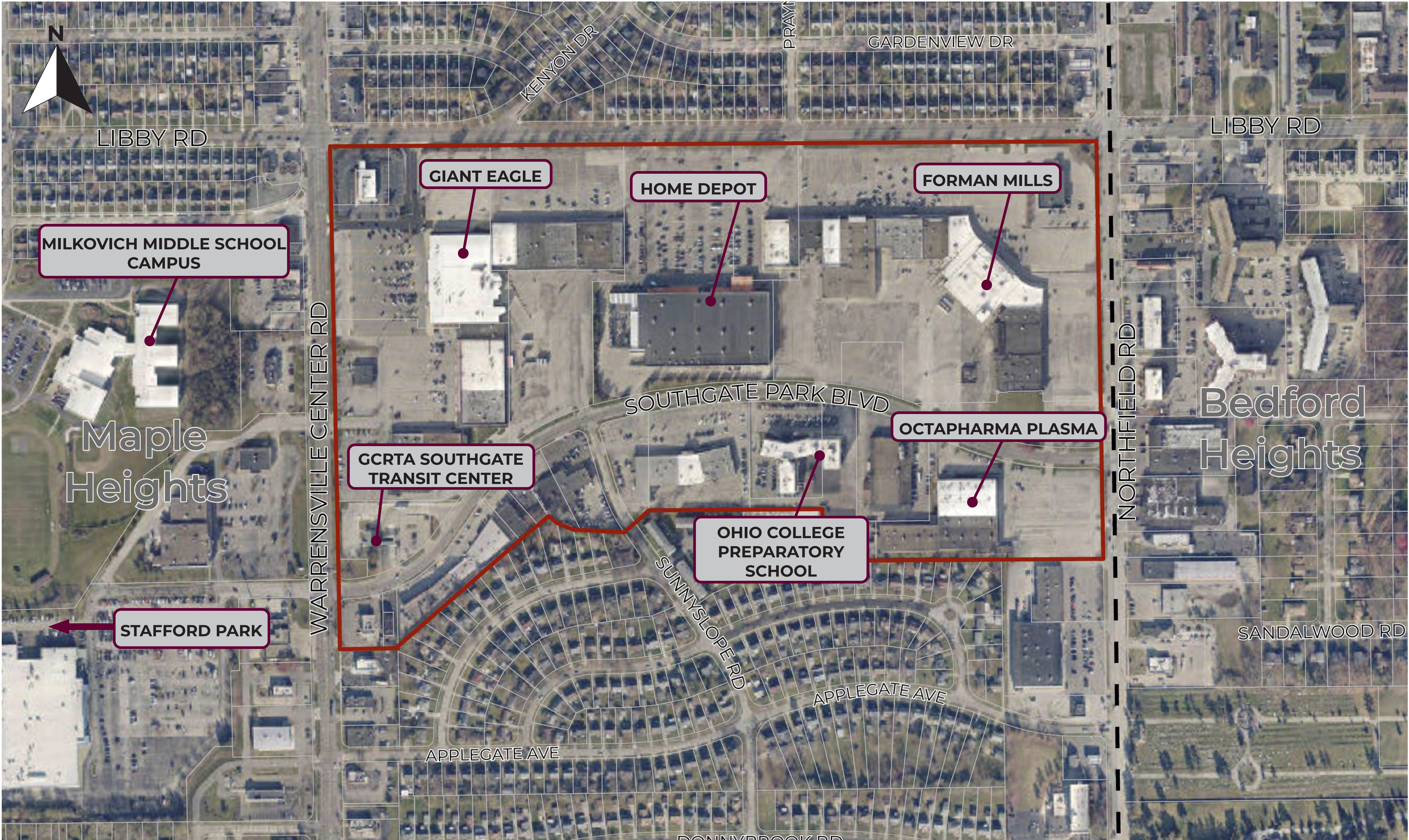


PLACE STICKY NOTES HERE



# Evolving Southgate Area Redevelopment Plan - Favorite Places

Where are your favorite places in the community — restaurants, parks, shops, or other places?  
Mark your **FAVORITE** places on the map with a dot. That will let us know places you might want to keep the same.





# Evolving Southgate Area Redevelopment Plan - Least Favorite Places

Help us improve the community! Mark your **LEAST FAVORITE** places on the map – intersections, a vacant lot you want to see redeveloped, or other areas that you think need attention or improvement.

