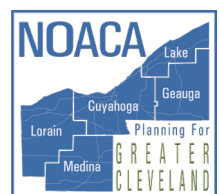


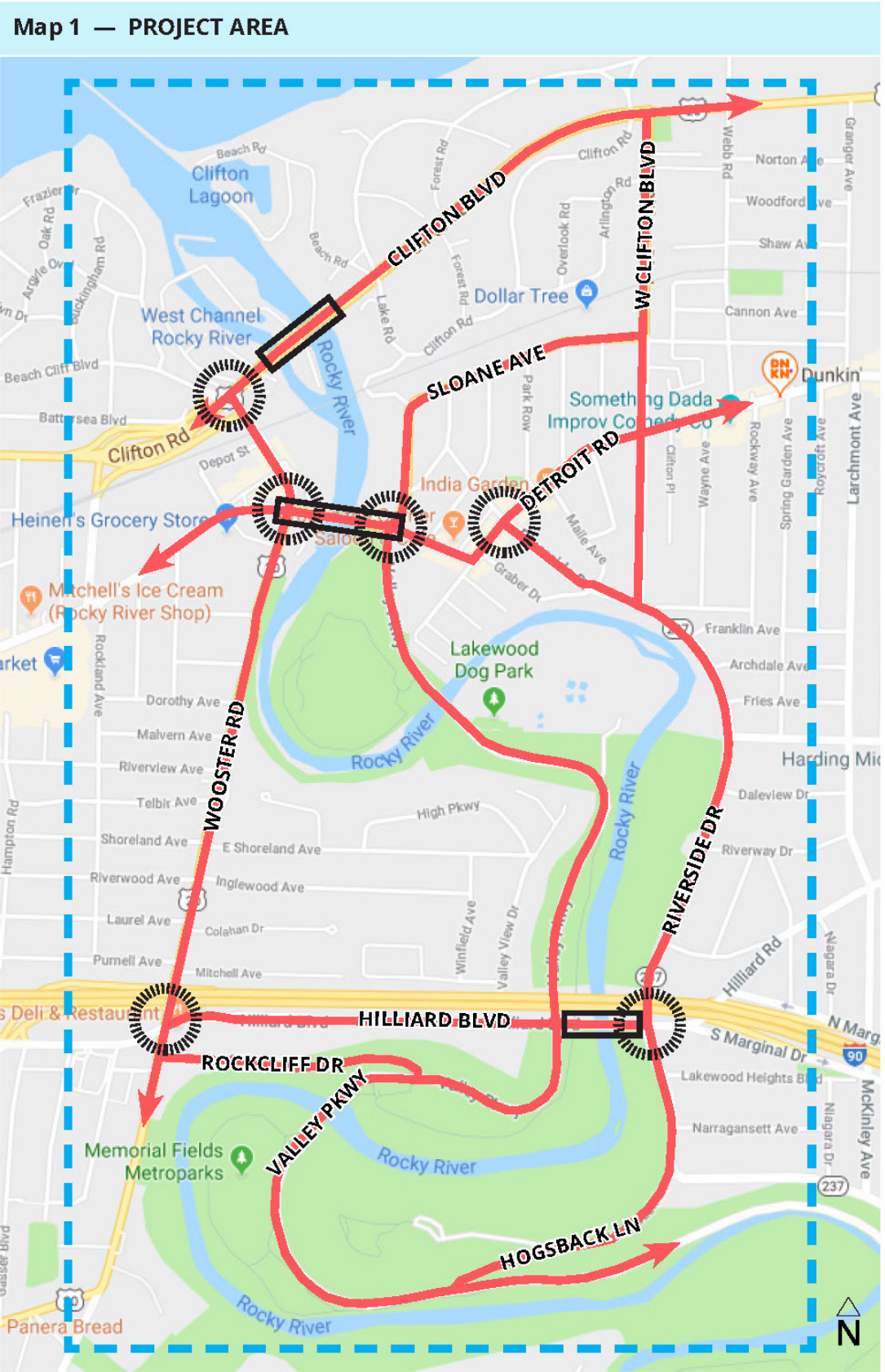
Community Confluence:

Connecting the Cities of Lakewood & Rocky River, and the Rocky River Reservation

Virtual Community Workshop #1



PROJECT OVERVIEW



GCRTA BUS ROUTES
IN STUDY AREA

55 26 25

MAP 1 LEGEND

- MAJOR STREET
- MAJOR INTERSECTION
- BRIDGE
- GENERAL STUDY AREA



OBJECTIVES

Project Overview

- High quality multimodal connectivity
- Humanize the pedestrian experience
- Strengthen Transit-Oriented Development
- Broaden awareness of park resources (visual and cognitive connections)
- “Shorten the distance” across the valley and between neighborhoods and the valley



OBJECTIVES

Project Overview

- Reinforce continuity between the cities and Metroparks
- Make study area a unique Place
- Reinforce regional connections along lakefront
- Serve all populations – 8 to 80, bikes and peds, e-mobility
- Remember water users on water trail – kayaks, boats
- Are there other needs? PLEASE TELL US (more on that in a moment.)



WHO IS LEADING THE EFFORT?

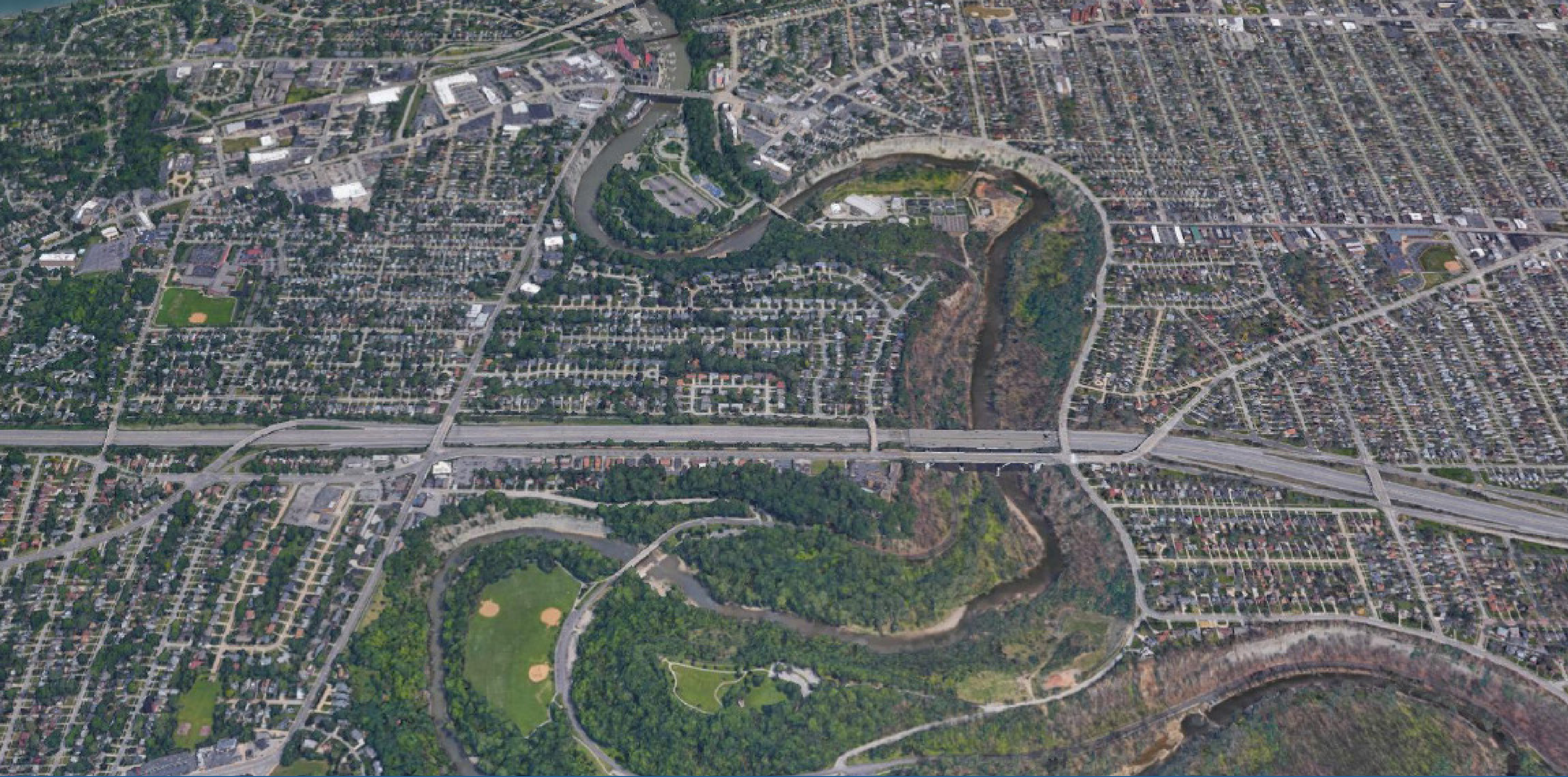
Project Overview

PROJECT TEAM



County Planning

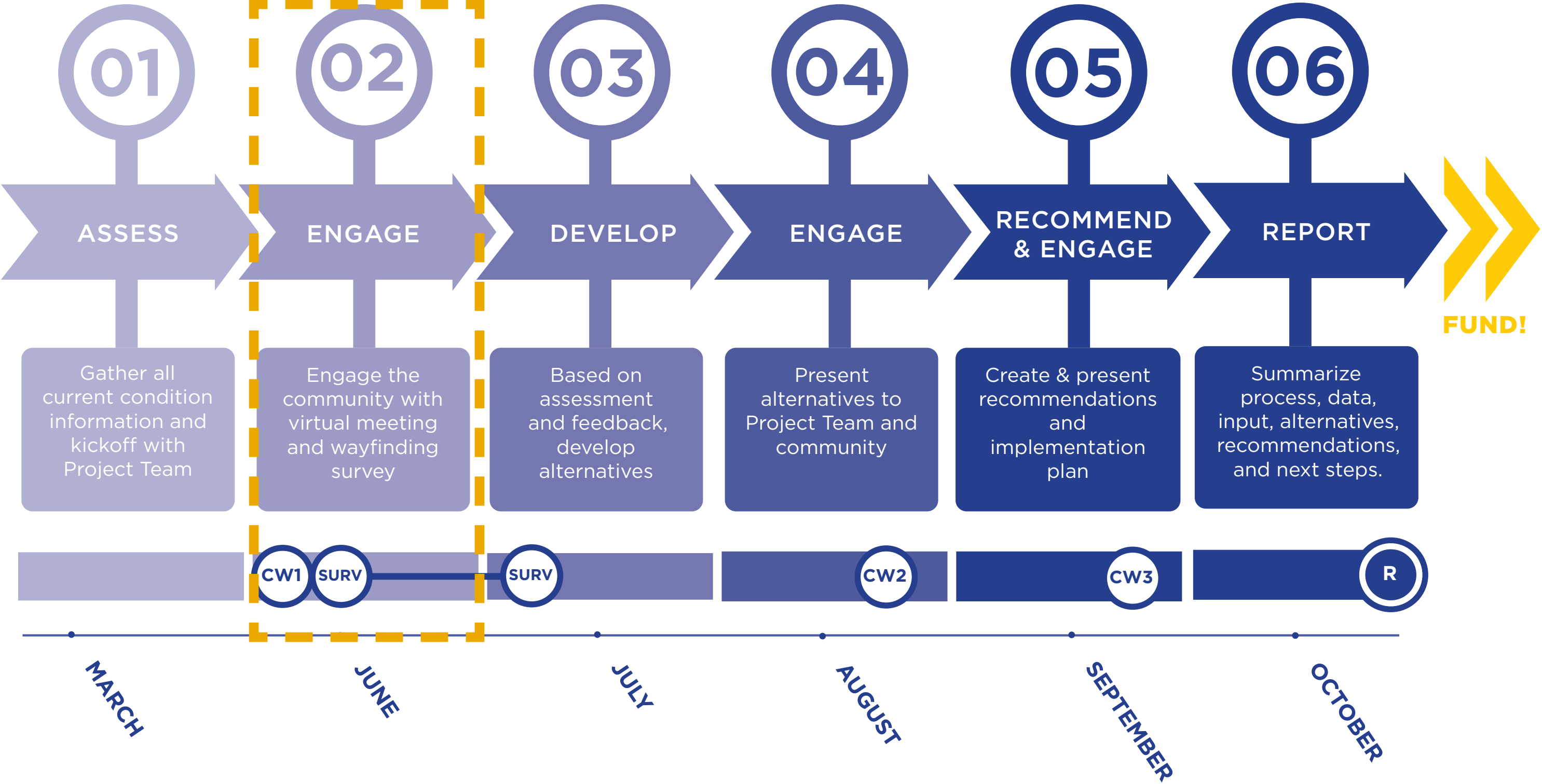


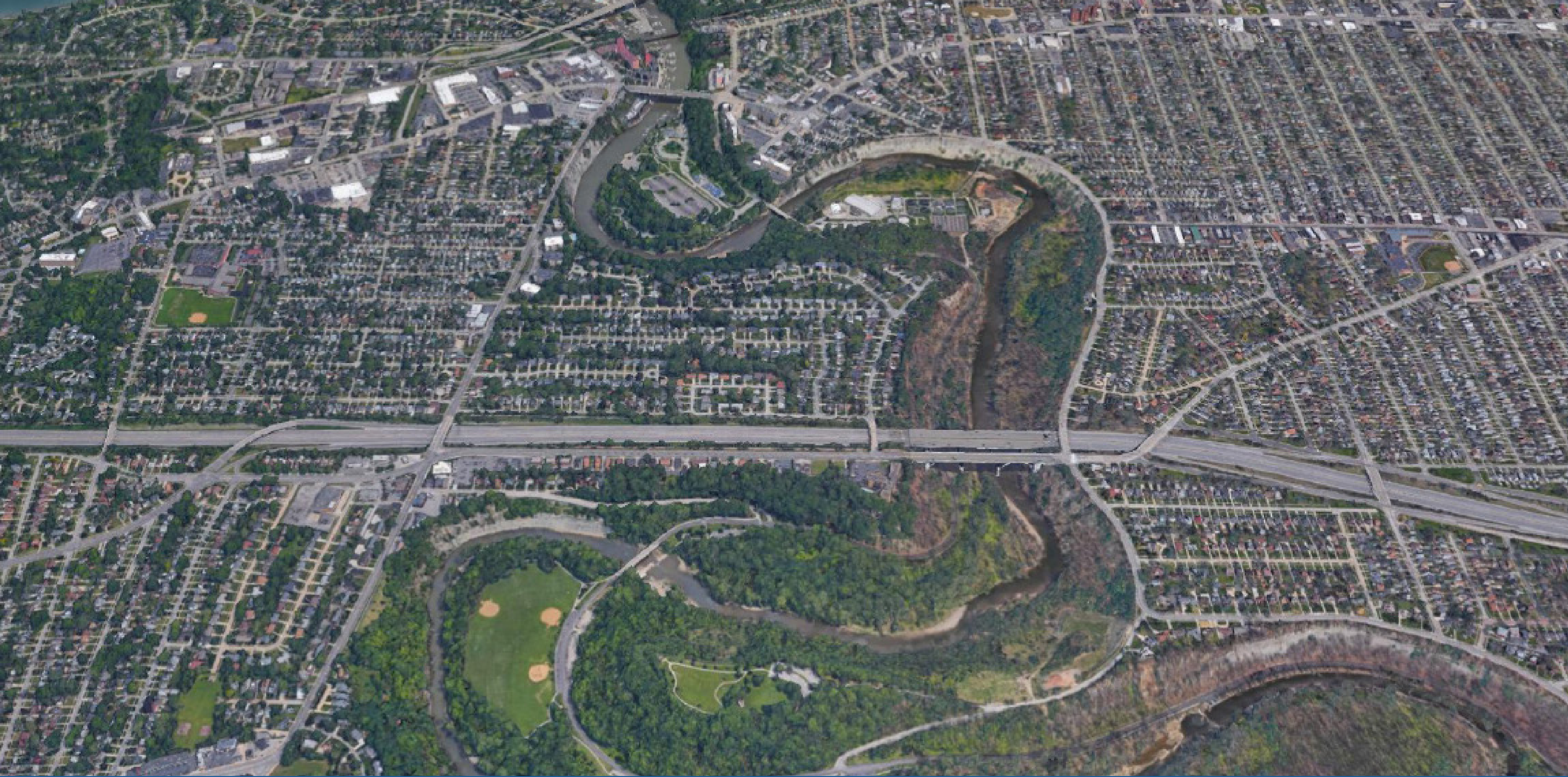


02 Project Process

02

PROCESS

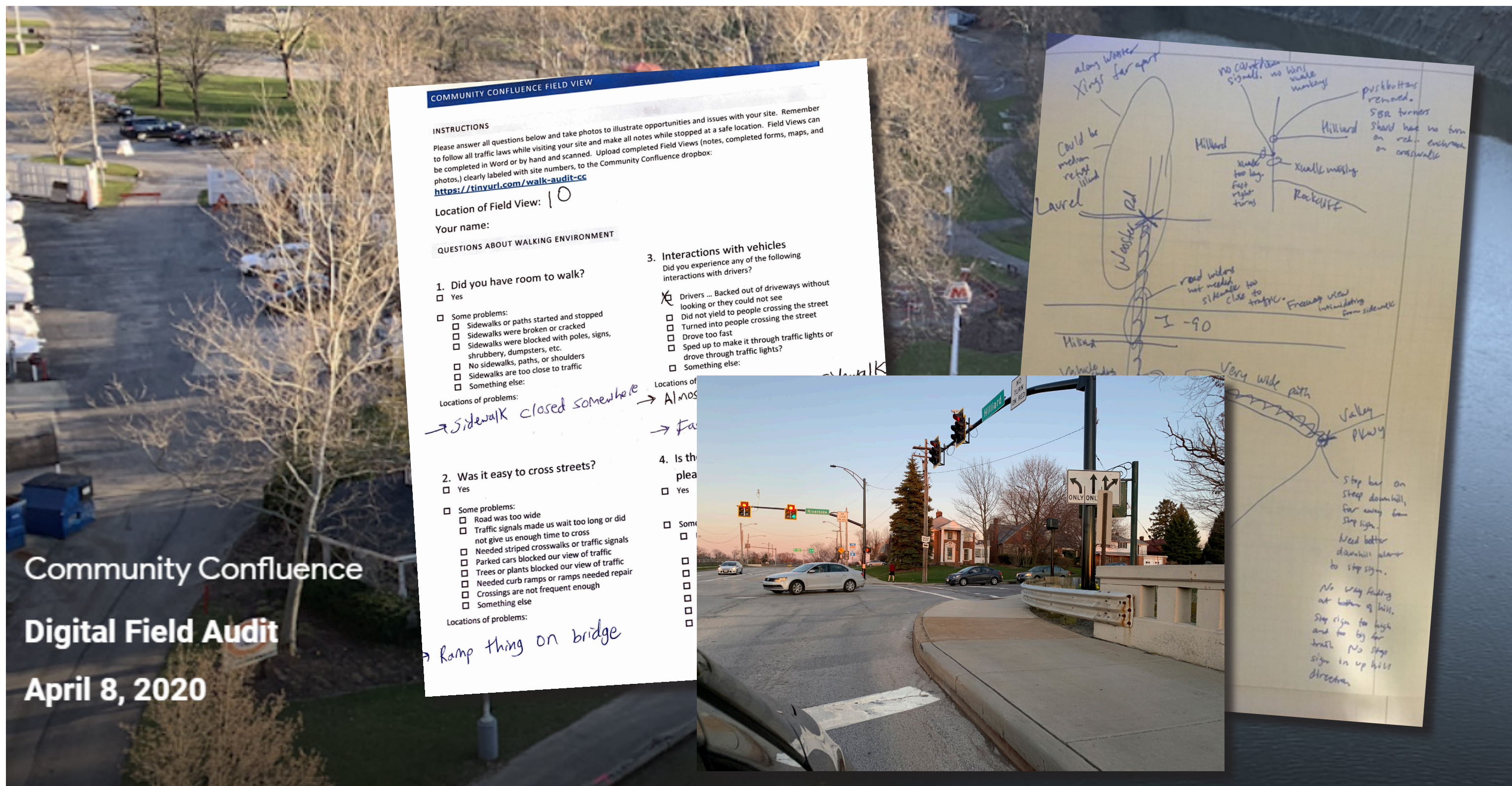


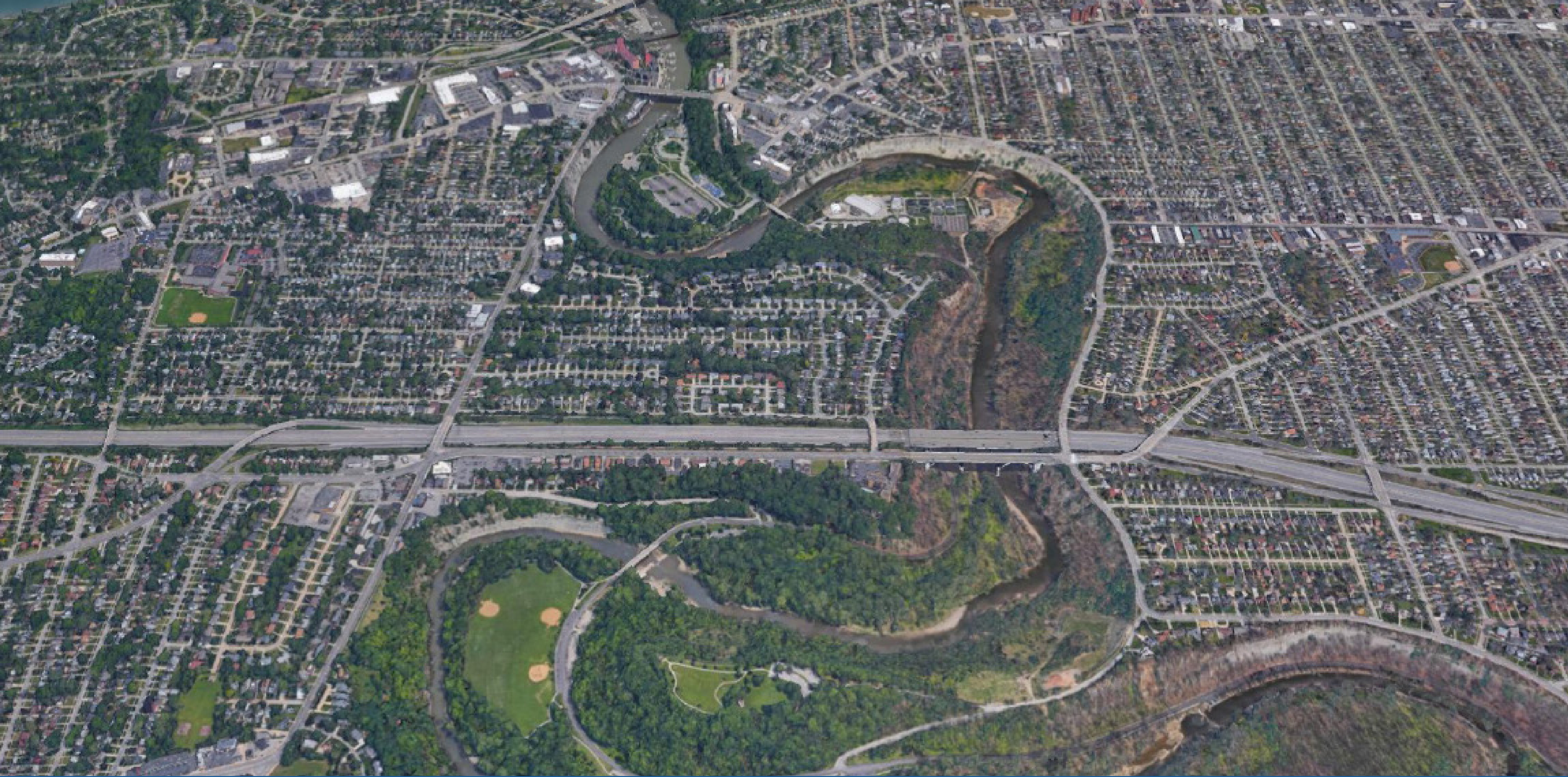


03 Existing Conditions

PAST & CURRENT STUDIES & PLANS

- Lakewood Community Vision
- 2014 Bike Lakewood Priorities Report
- Active Living Task Force Recommendations Report
- Rocky River Comprehensive Master Plan
- Rocky River Reservation Plan
- Cuyahoga Greenways TLCI Plan
- Detroit Road Traffic, Parking Analysis with Marion Ramp Feasibility Analysis
- Emerald Necklace Trail Bicycle and Pedestrian Crossing Improvements Study
- Detroit/Sloane/Valley Parkway Intersection Improvement Study
- Hilliard Boulevard Bridge Rehabilitation Project





04 How to Participate



VIRTUAL COMMUNITY WORKSHOP

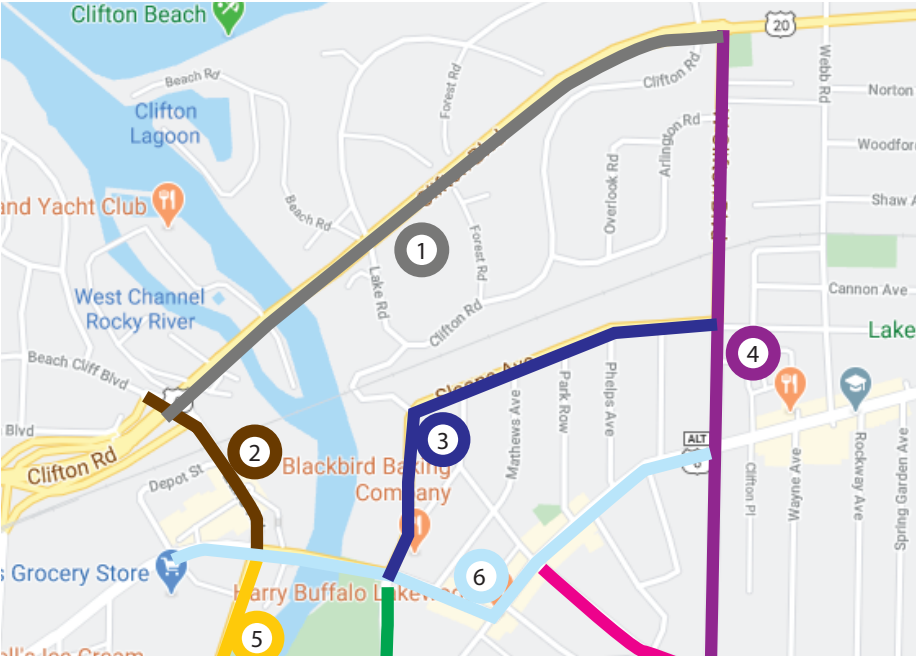
How to Participate

1. **Watch this video.** (Check!)
2. **Answer the questionnaire.**
3. **Take the wayfinding survey.**

1. Scan this QR code or go to <https://www.countyplanning.us/projects/community-confluence/virtual-community-workshop/>:

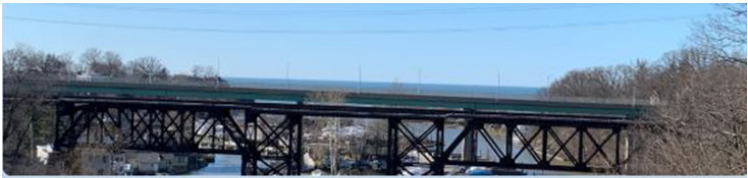


2. Select a street you would like to comment on.



- 1 Clifton Blvd from W Clifton Rd to Lake Rd (0.8 mi.)
- 2 Lake Rd from Frazier Dr to Detroit Ave (0.3 mi.)
- 3 Sloane Ave from W Clifton Blvd to Detroit Ave (0.6 mi)
- 4 W Clifton Rd from Clifton Blvd to River-side Dr (0.7 mi)
- 5 Wooster Rd from Detroit Ave to Laurel Ave (0.7 mi)
- 6 Detroit Ave from Clifton Pl to W 192 St (0.7 mi)

3. Answer the questions.

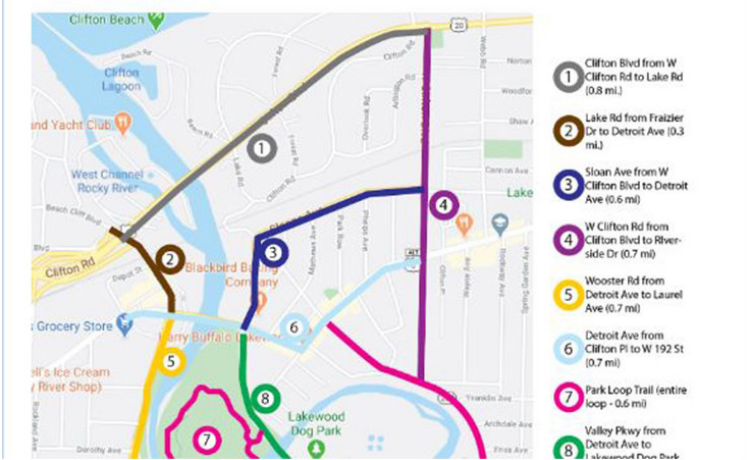


Community Confluence Virtual Workshop Questionnaire

Thank you for participating! The cities of Rocky River, Lakewood, Cleveland Metroparks, and NOACA are exploring ways to improve the experience of walking and bicycling the area. We appreciate your ideas and encourage you to provide your email address to stay up to date with the project. Your feedback will be invaluable!

Feel free to take this survey MULTIPLE TIMES for however many different streets you'd like to answer the questionnaire for.

Project Map



4. Repeat this process for as many streets as you want.

1. Scan this QR code:

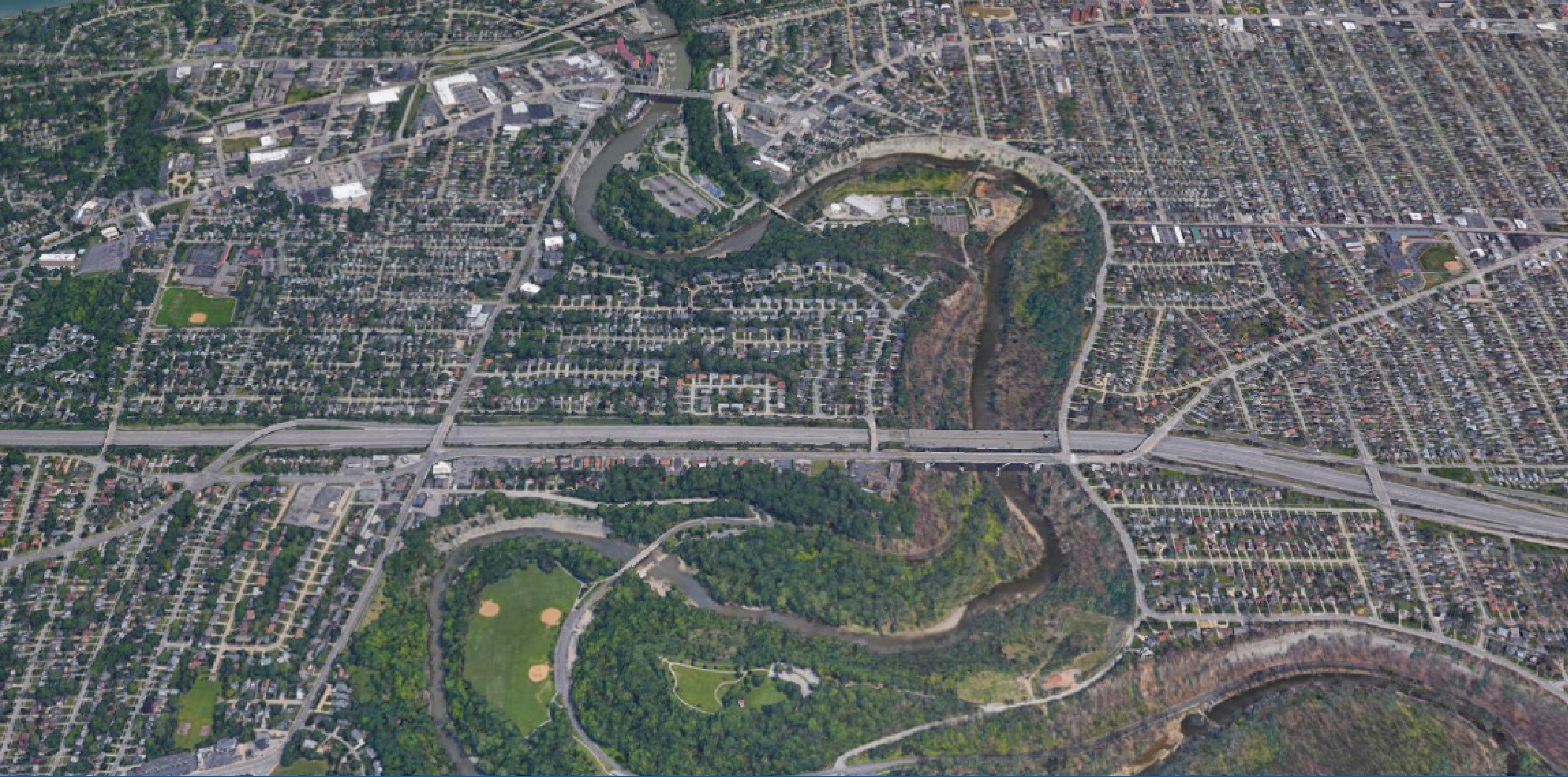


2. Answer the survey questions

Community Confluence Connectivity Survey

Getting to know you continued

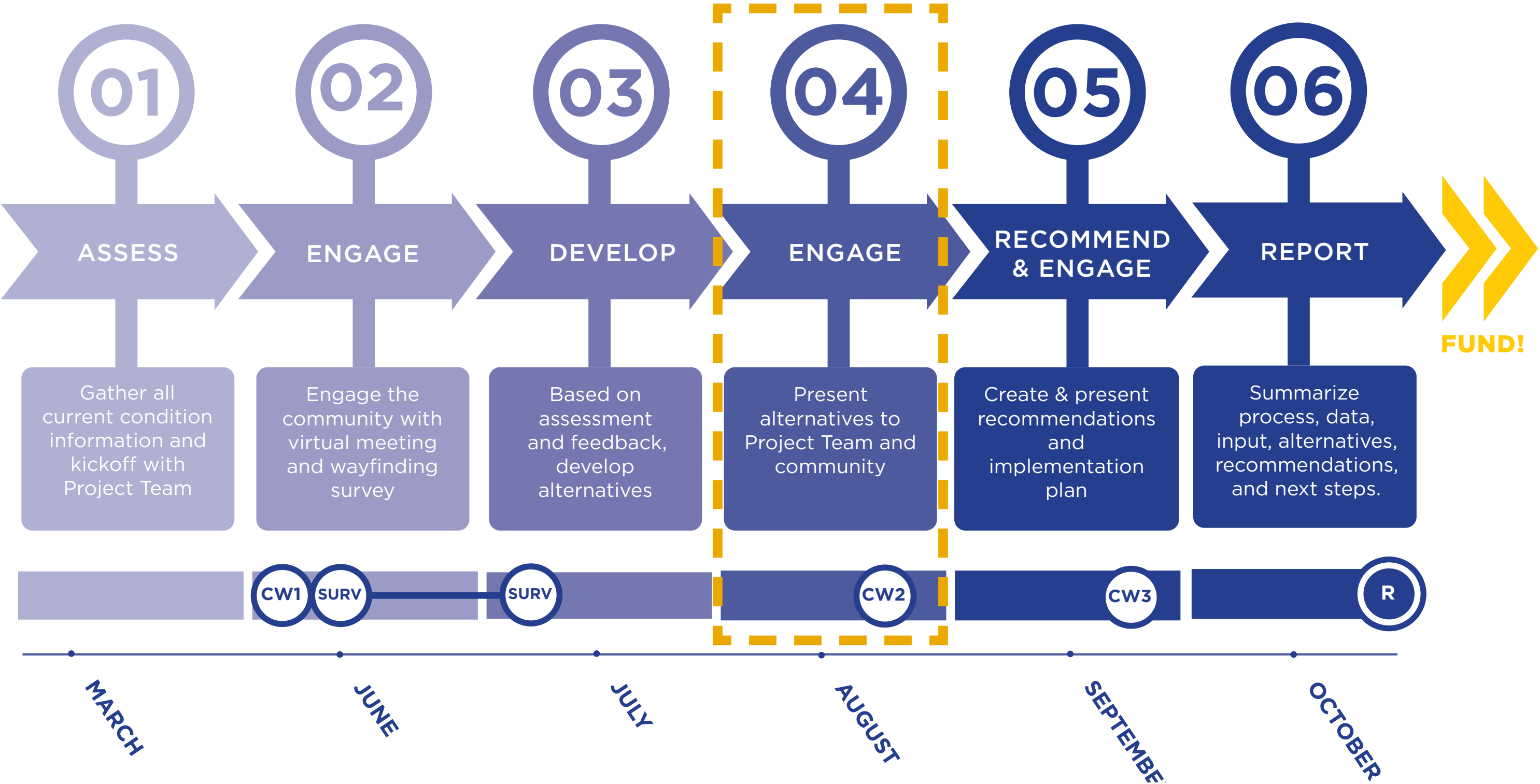
- * 4. Do you have school-aged children that live in your home or visit regularly?
 - ☐ I have school-aged children living at home.
 - ☐ I have school-aged children that regularly visit my home.
 - ☐ None of the above.
- * 5. Which of the following best describes your relationship to the study area?
 - ☐ I live here.
 - ☐ I work here.
 - ☐ I own a business here.
 - ☐ I visit here.



05 Next Steps

05

NEXT STEPS





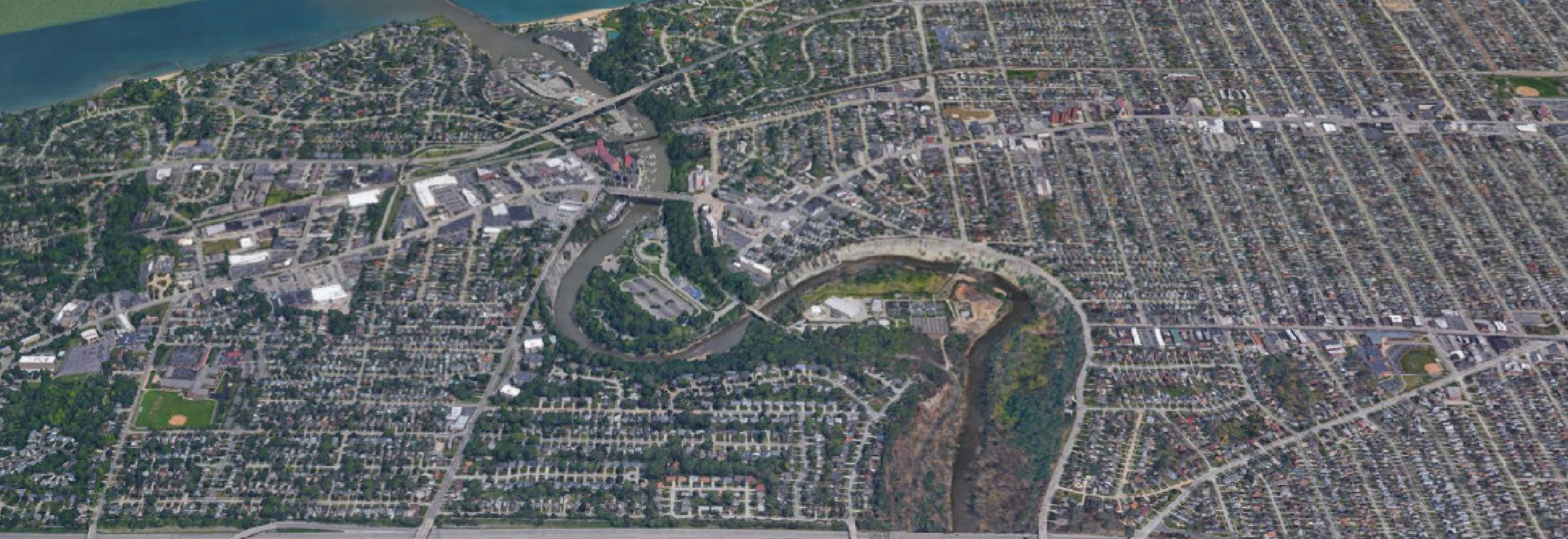
STAY IN TOUCH

Next Steps

**Visit <https://countyplanning.us/CommunityConfluence> for updates
(or scan this code.)**



**THANK YOU FOR ATTENDING COMMUNITY WORKSHOP #1 FOR
COMMUNITY CONFLUENCE!**



Community Confluence:

Connecting the Cities of Lakewood & Rocky River, and the Rocky River Reservation

Virtual Community Workshop #1

