

STATION 1 | COMMUNITY VISION

WHAT IS A COMMUNITY VISION?

The Community Vision is a broad and bold statement that describes your vision for the future of Broadview Heights. It describes generally what Broadview Heights looks and feels like for the people that live, work, and visit the City. The Community Vision does outline broad goals, however it does not describe specific action steps or policies to undertake.

INSTRUCTIONS

We want to know *YOUR* vision for the City of Broadview Heights! Please write down any ideas or thoughts you have about the Community Vision and place them on sticky notes in the grey box below. There are no right or wrong answers, so write down any comments you have about the future of Broadview Heights and what you feel that should look like.

If you have questions or need further assistance, please find a County Planning representative to help guide you through this exercise.

What is *YOUR* vision for the future of Broadview Heights?



STATION 2 | GOALS

What are Goals?

Goals are key topics that will provide focus to the Master Plan and reinforce the Community Vision. Additionally, Goals will help shape future recommendations that will come as a result of feedback from YOU, the public, the Steering Committee, and City staff.

INSTRUCTIONS

We want to know **YOUR** opinions about the types of goals the Broadview Heights Master Plan should focus on! Please write down any ideas or thoughts you have about the goals and place them on sticky notes in the corresponding grey boxes below. There are no right or wrong answers, so write down any comments you have about the future of Broadview Heights and what you feel that should look like.

If you have questions or need further assistance, please find a County Planning representative to help guide you through this exercise.

DEVELOPING CONNECTIONS

The *Developing Connections* goal means increasing the ways you can get around the community. This goal could include anything from improving the road network and trail system to bolstering infrastructure and maintenance.



What are **YOUR** thoughts about this goal?
Does this goal **FIT** with your vision for the community?

MAINTAINING DIVERSE HOUSING OPTIONS

The *Maintaining Diverse Housing Options* goal means providing a variety of housing choices and ensuring their maintenance over time. This goal could include anything from adding certain housing types and density to improving home-ownership and property maintenance.



What are **YOUR** thoughts about this goal?
Does this goal **FIT** with your vision for the community?

ENHANCING COMMUNITY SPACES

The *Enhancing Community Spaces* goal means providing high-quality amenities in attractive public spaces. This goal could include anything from adding park benches and sports fields to improving community events and recreation.



What are **YOUR** thoughts about this goal?
Does this goal **FIT** with your vision for the community?



STATION 2 | GOALS

What are Goals?

Goals are key topics that will provide focus to the Master Plan and reinforce the Community Vision. Additionally, Goals will help shape future recommendations that will come as a result of feedback from YOU, the public, the Steering Committee, and City staff.

INSTRUCTIONS

We want to know **YOUR** opinions about the types of goals the Broadview Heights Master Plan should focus on! Please write down any ideas or thoughts you have about the goals and place them on sticky notes in the corresponding grey boxes below. There are no right or wrong answers, so write down any comments you have about the future of Broadview Heights and what you feel that should look like.

If you have questions or need further assistance, please find a County Planning representative to help guide you through this exercise.

FOSTERING QUALITY DEVELOPMENT

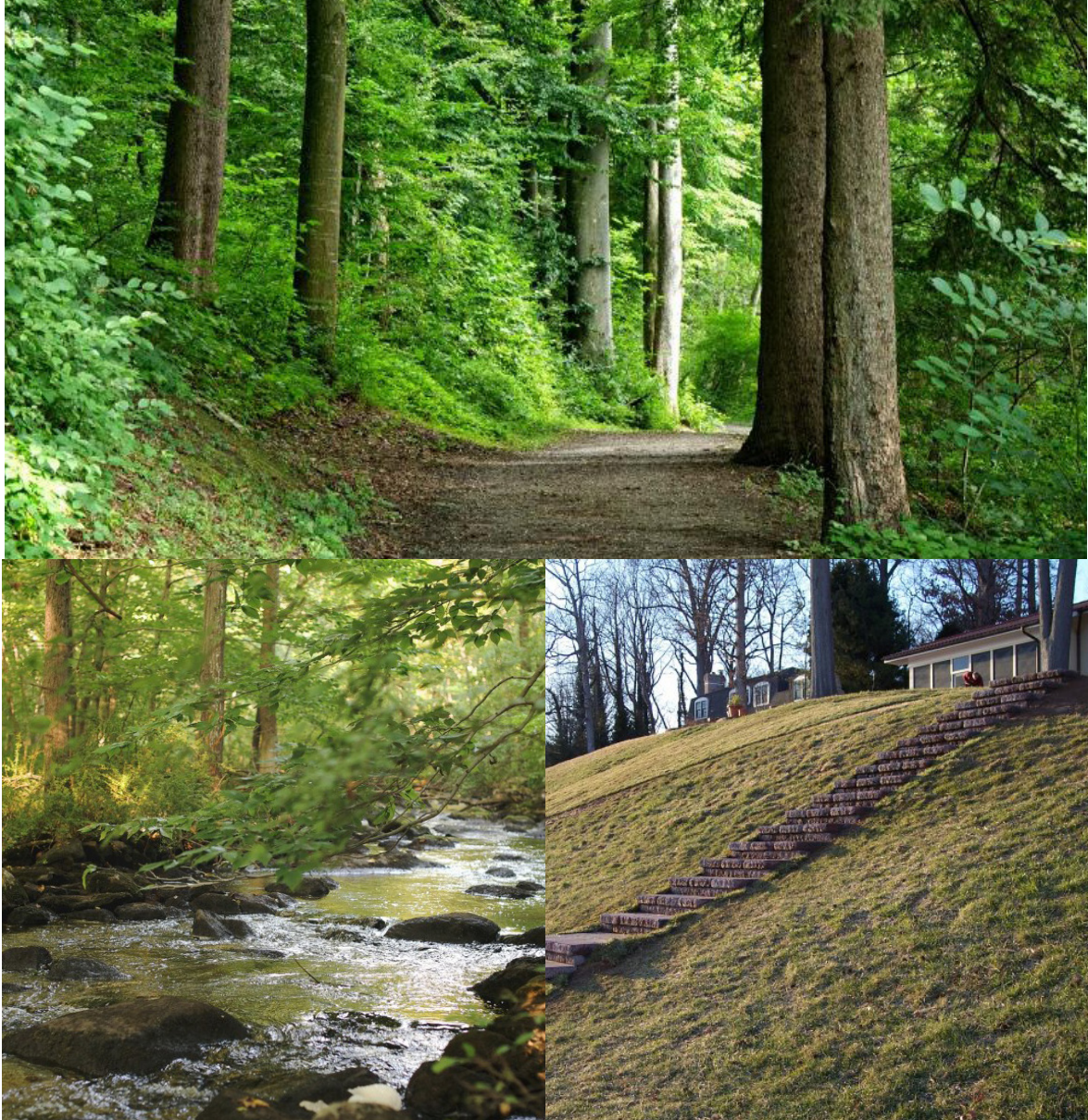
The *Fostering Quality Development* goal means constructing new buildings and places that support jobs, provide interesting and vibrant spaces, and grow the tax base. This goal could include anything from constructing new buildings and infrastructure to enhancing design guidelines and zoning.



What are **YOUR** thoughts about this goal? Does this goal **FIT** with your vision for the community?

PROTECTING NATURAL FEATURES

The *Protecting Natural Features* goal means embracing the community's unique landscapes and providing measures to ensure their protection. This could include anything from hillside and erosion controls to ensuring tree protection and water quality.



What are **YOUR** thoughts about this goal? Does this goal **FIT** with your vision for the community?

Do you have other goals that the Master Plan should focus on?



STATION 3 | TOWN CENTER

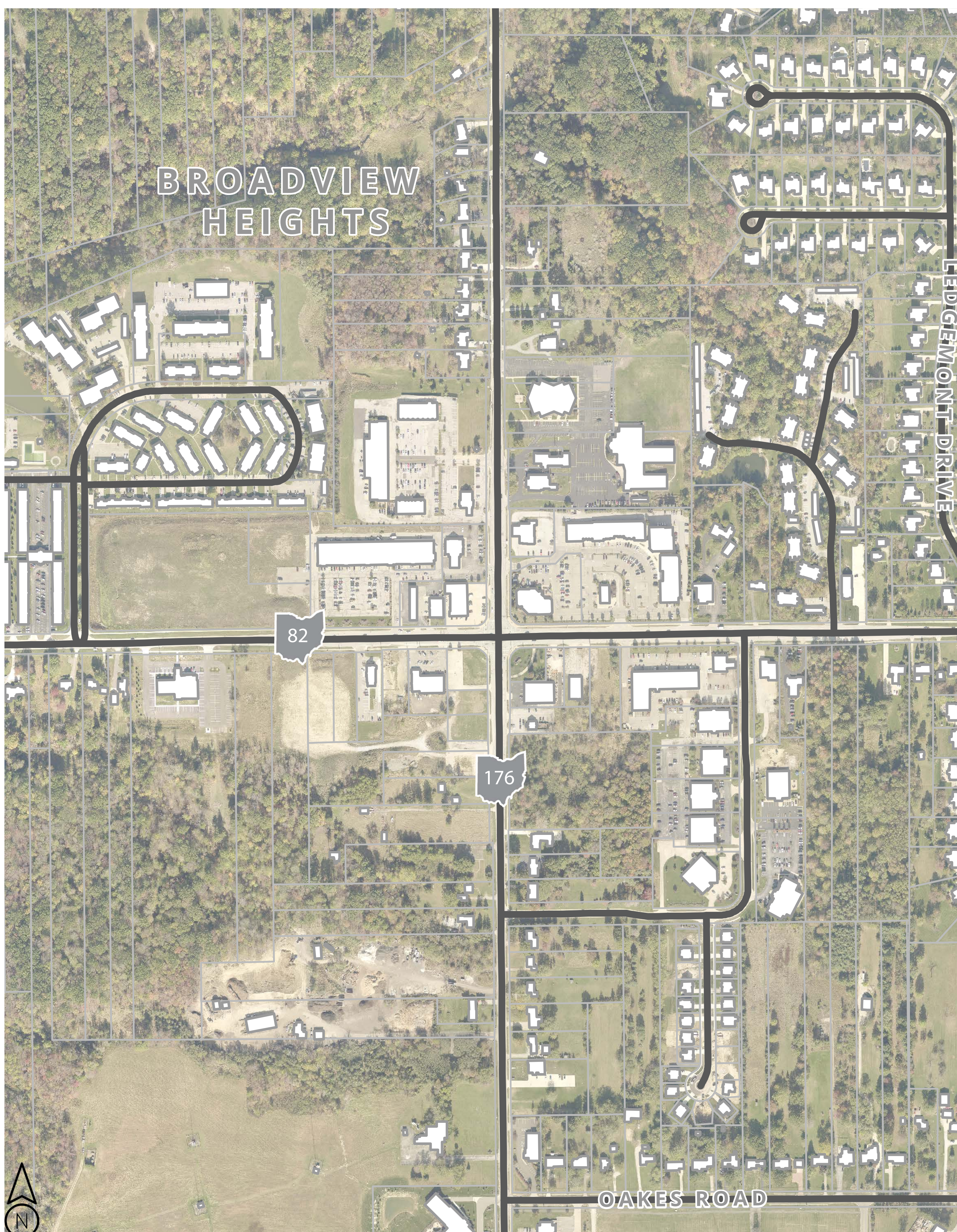
WHY WAS THE TOWN CENTER SELECTED AS A FOCUS AREA?

The intersection of Royalton Road and Broadview Road is perhaps the largest and most prominent road crossing within the City of Broadview Heights. Additionally, there is potential for new retail and restaurant development, key connections into local destinations such as the Community Center, and future residential development. The Town Center is the most centralized meeting point within the community and will continue to be an important component of the Master Plan as we move forward.

INSTRUCTIONS

We want to know **YOUR** vision for the Town Center! Please write down any ideas or thoughts you have about the Town Center and place them on sticky notes in the corresponding grey boxes below. There are no right or wrong answers, so write down any comments you have about the future of the Town Center and what you feel that should look like.

If you have questions or need further assistance, please find a County Planning representative to help guide you through this exercise.



What do you **LIKE** about the Town Center?

What would you **CHANGE** within the Town Center?

What is **YOUR** vision for future development within the Town Center?

STATION 3 | TOWN CENTER

The Town Center area is framed by the Royalton Road and Broadview Road intersection. This intersection alone can see well over 20,000 vehicles per day and presents opportunities to attract visitors to stop, stay, and spend money locally within the City.

INSTRUCTIONS

Place a **GREEN** dot to indicate the building types you feel would be most appropriate for Town Center area. Additionally, write any comments on sticky notes and place them in the grey box below.

If you have questions or need further assistance, please find a County Planning representative to help guide you through this exercise.



Which image or images did you select? Why did you select the images you did? Please write the image number or numbers you selected on your sticky note.

STATION 4 | NORTH END OF TOWN

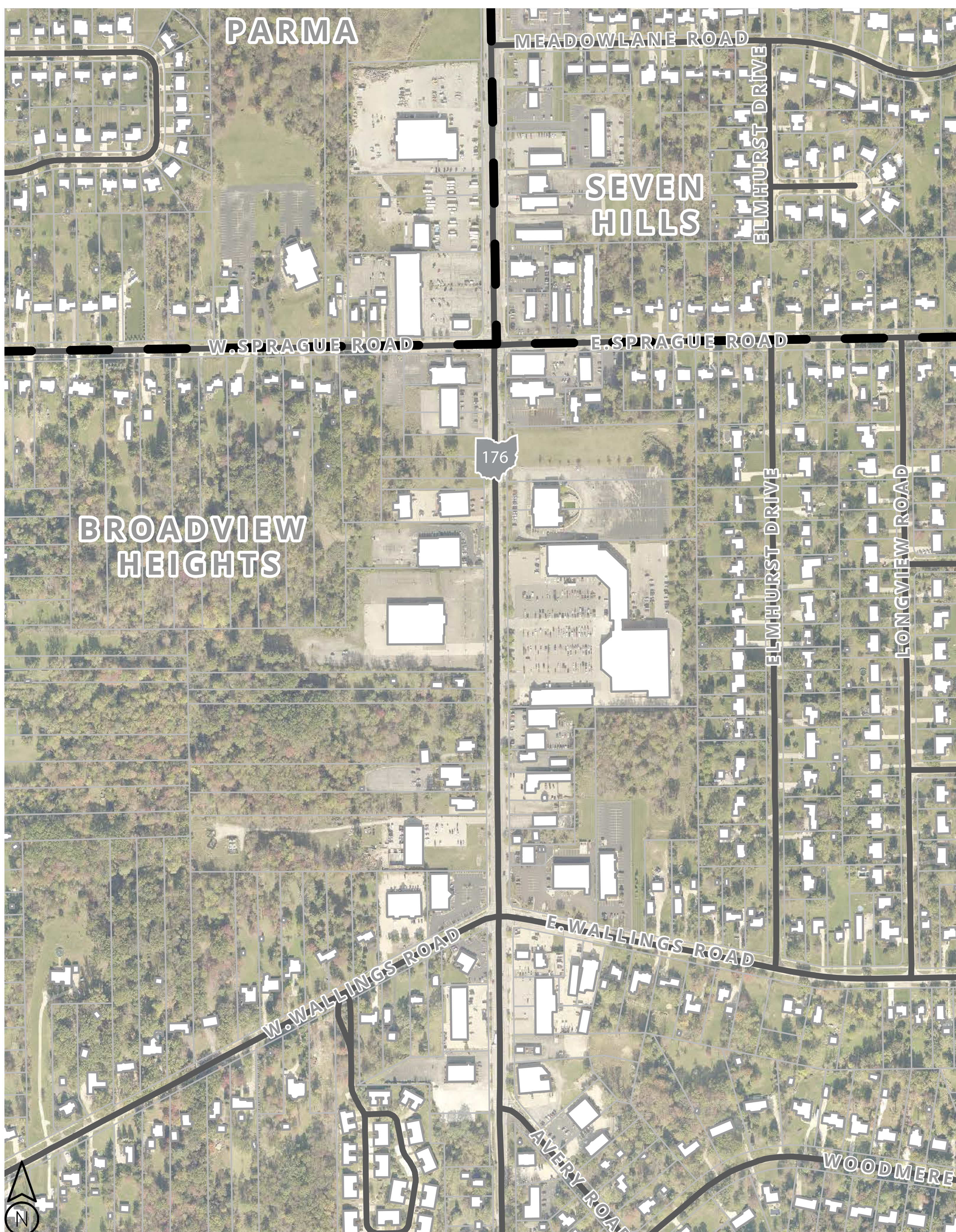
WHY WAS THE NORTH END OF TOWN SELECTED AS A FOCUS AREA?

The North End of Town is unique because this area shares a border with two other municipalities: the City of Parma and the City of Seven Hills. The area is framed by Broadview Road and Sprague Road and has easy access to I-77 via East Wallings Road. The North End of Town was selected as a Focus Area because of the potential for redevelopment, reinvestment, and collaboration with neighbors. This area acts as an anchor for the northern portion of the community and provides key amenities, such as grocery stores and pharmacies, to residents.

INSTRUCTIONS

We want to know **YOUR** vision for the North End of Town! Please write down any ideas or thoughts you have about the North End of Town and place them on sticky notes in the corresponding grey boxes below. There are no right or wrong answers, so write down any comments you have about the future of the North End of Town and what you feel that should look like.

If you have questions or need further assistance, please find a County Planning representative to help guide you through this exercise.



What do you **LIKE** about the North End of Town?

What would you **CHANGE** in the North End of Town?

What is **YOUR** vision for future development within the North End of Town?

STATION 4 | NORTH END OF TOWN

The North End of Town provides areas for larger retail centers and locations for dining, shopping, and conducting business. This area abuts single-family residential areas, and it is important to look at how the area impacts surrounding neighborhoods.

INSTRUCTIONS

Place a **GREEN** dot to indicate the building types you feel would be most appropriate for the North End of Town. Additionally, write any comments on sticky notes and place them in the grey box below.

If you have questions or need further assistance, please find a County Planning representative to help guide you through this exercise.



Which image or images did you select? Why did you select the images you did? Please write the image number or numbers you selected on your sticky note.

STATION 5 | ROYALTON ROAD EAST

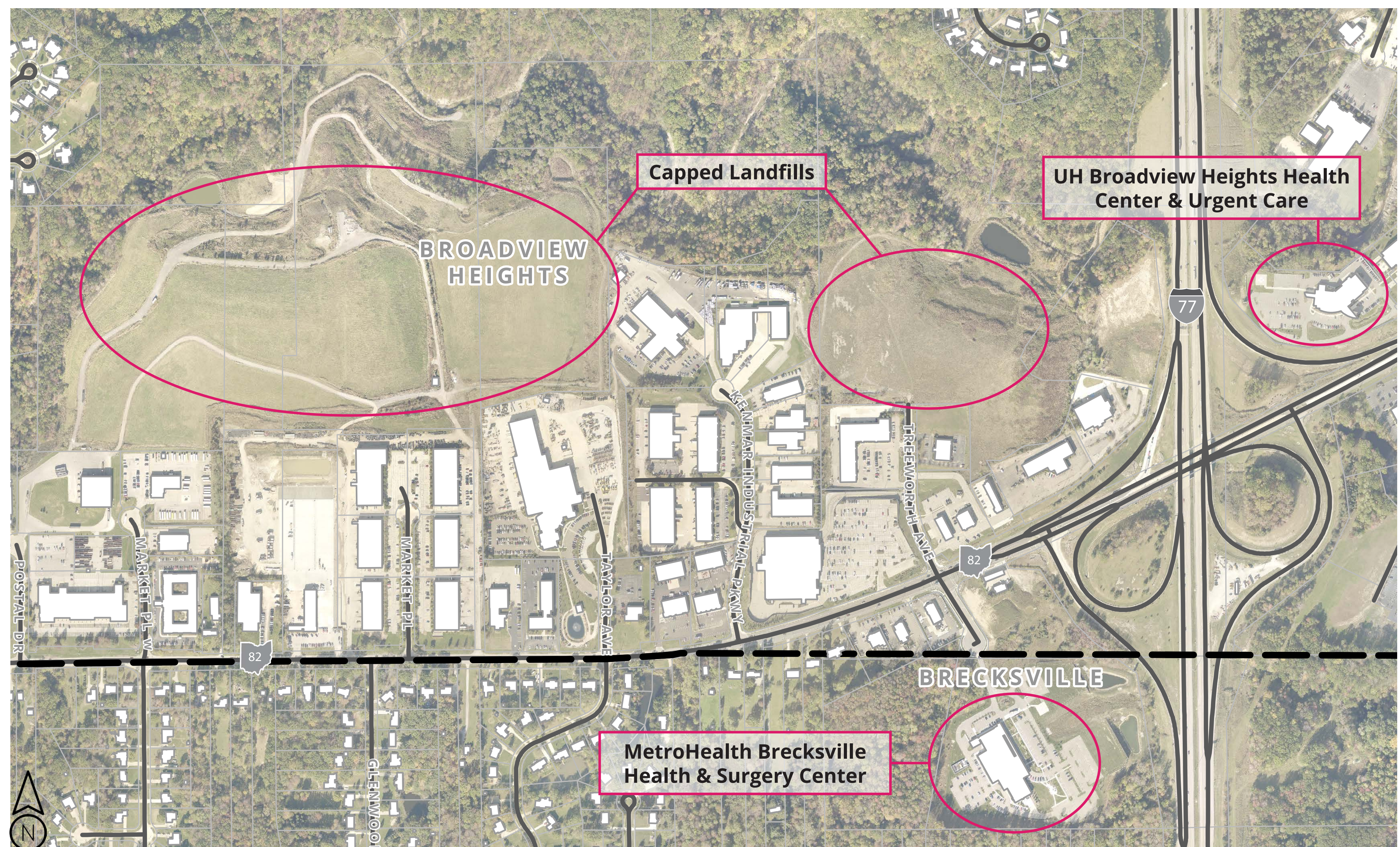
WHY WAS ROYALTON ROAD EAST SELECTED AS A FOCUS AREA?

Royalton Road, especially near the I-77 interchange, sees the City's largest numbers of daily traffic. With nearly 24,000 vehicles utilizing this roadway through Broadview Heights everyday, this area provides immense exposure for the community to attract vehicles from the highway into the community. This area acts as an anchor for the eastern portion of the community and offers unique opportunities for connectivity, new development, renewable energy, and open space.

INSTRUCTIONS

We want to know **YOUR** vision for the Royalton Road East area! Please write down any ideas or thoughts you have about the Royalton East Area and place them on sticky notes in the corresponding grey boxes below. There are no right or wrong answers, so write down any comments you have about the future of the Royalton Road East area and what you feel that should look like.

If you have questions or need further assistance, please find a County Planning representative to help guide you through this exercise.



What do you **LIKE** about the Royalton Road East area?

What would you **CHANGE** within the Royalton Road East area?

What is **YOUR** vision for future development within the Royalton Road East area?

STATION 5 | ROYALTON ROAD EAST

Royalton Road East has some of the City's highest concentrations of retail, office, and industrial uses. This location contains one of the two highway interchanges located within the community and also includes a UH Health Center & Urgent Care, a Giant Eagle Supermarket, and some of the City's highest employers of jobs; such as Ohio CAT.

INSTRUCTIONS

Place a **GREEN** dot to indicate the building types you feel would be most appropriate for the Royalton Road East area. Additionally, write any comments on sticky notes and place them in the grey box below.

If you have questions or need further assistance, please find a County Planning representative to help guide you through this exercise.



Which image or images did you select? Why did you select the images you did? Please write the image number or numbers you selected on your sticky note.

STATION 6 | COMMUNITY CENTER CAMPUS

WHY WAS THE COMMUNITY CENTER CAMPUS SELECTED AS A FOCUS AREA?

The Community Center Campus continues to be a prominent and valued location within the City of Broadview Heights. Recent renovations and the installation of new amenities for residents and neighbors has reinforced this location as a key gathering point. The Community Center Campus was selected as a Focus Area because of ongoing and desired investments to the site. Additionally, this Focus Area offers opportunities for expansions into the future.

INSTRUCTIONS

We want to know **YOUR** vision for the Community Center Campus! Please write down any ideas or thoughts you have about the Community Center Campus and place them on sticky notes in the corresponding grey boxes below. There are no right or wrong answers, so write down any comments you have about the future of the Community Center Campus and what you feel that should look like.

If you have questions or need further assistance, please find a County Planning representative to help guide you through this exercise.



What do you **LIKE** about the Community Center Campus?

What would you **CHANGE** within the Community Center Campus?

What is **YOUR** vision for the future of Community Center Campus?



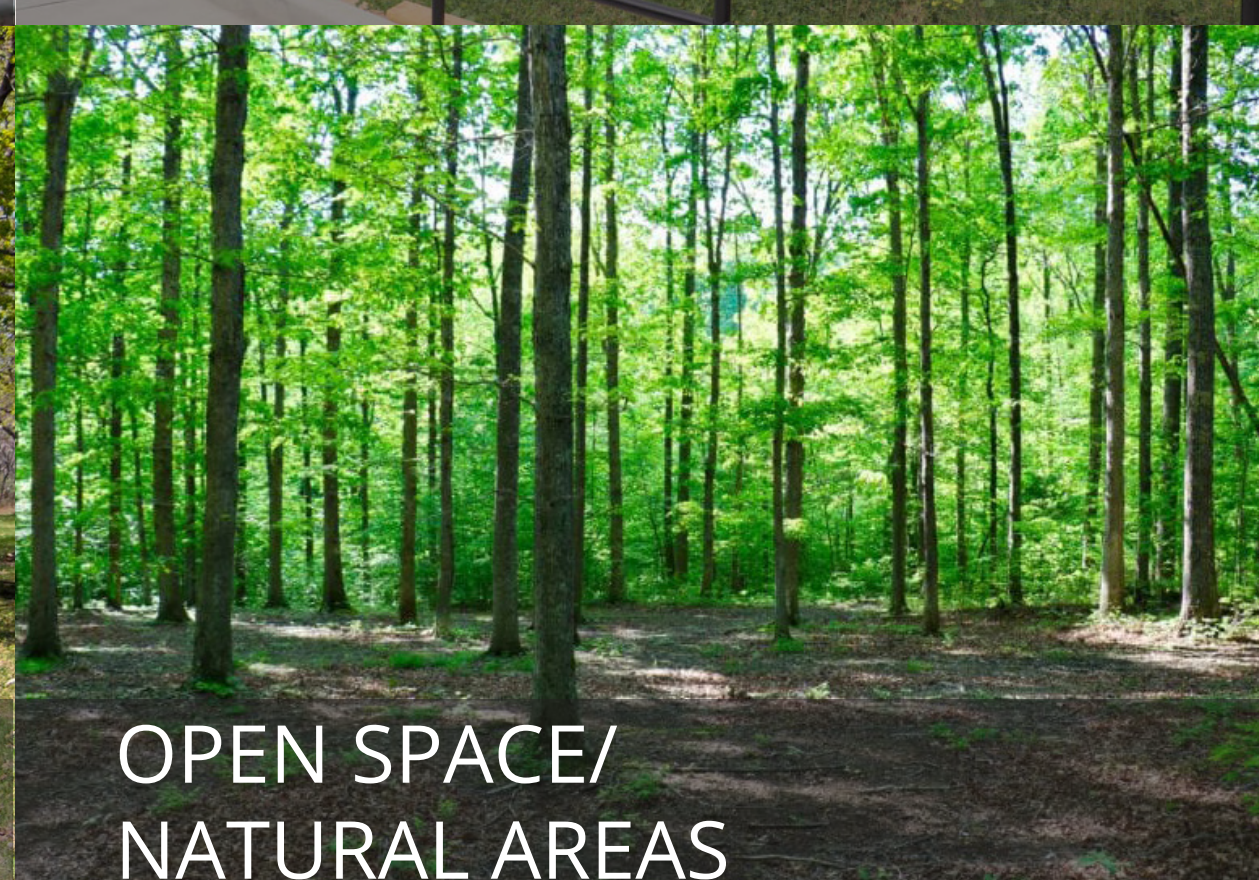
STATION 6 | COMMUNITY CENTER CAMPUS

The Community Center Campus is the pride of the City of Broadview Heights. There are a wealth of amenities and municipal services located within this single location, making it an ideal site as a community meeting place and for conducting business.

INSTRUCTIONS

We want to know **YOUR** opinions about the types of amenities you would like to see as the Community Center Campus! Please write down any ideas or thoughts you have about the types of amenities you would like to see and place them on sticky notes in the grey box below.

If you have questions or need further assistance, please find a County Planning representative to help guide you through this exercise.



What types of amenities would **YOU** like to see at the Community Center Campus? Please explain your ideas or comments.



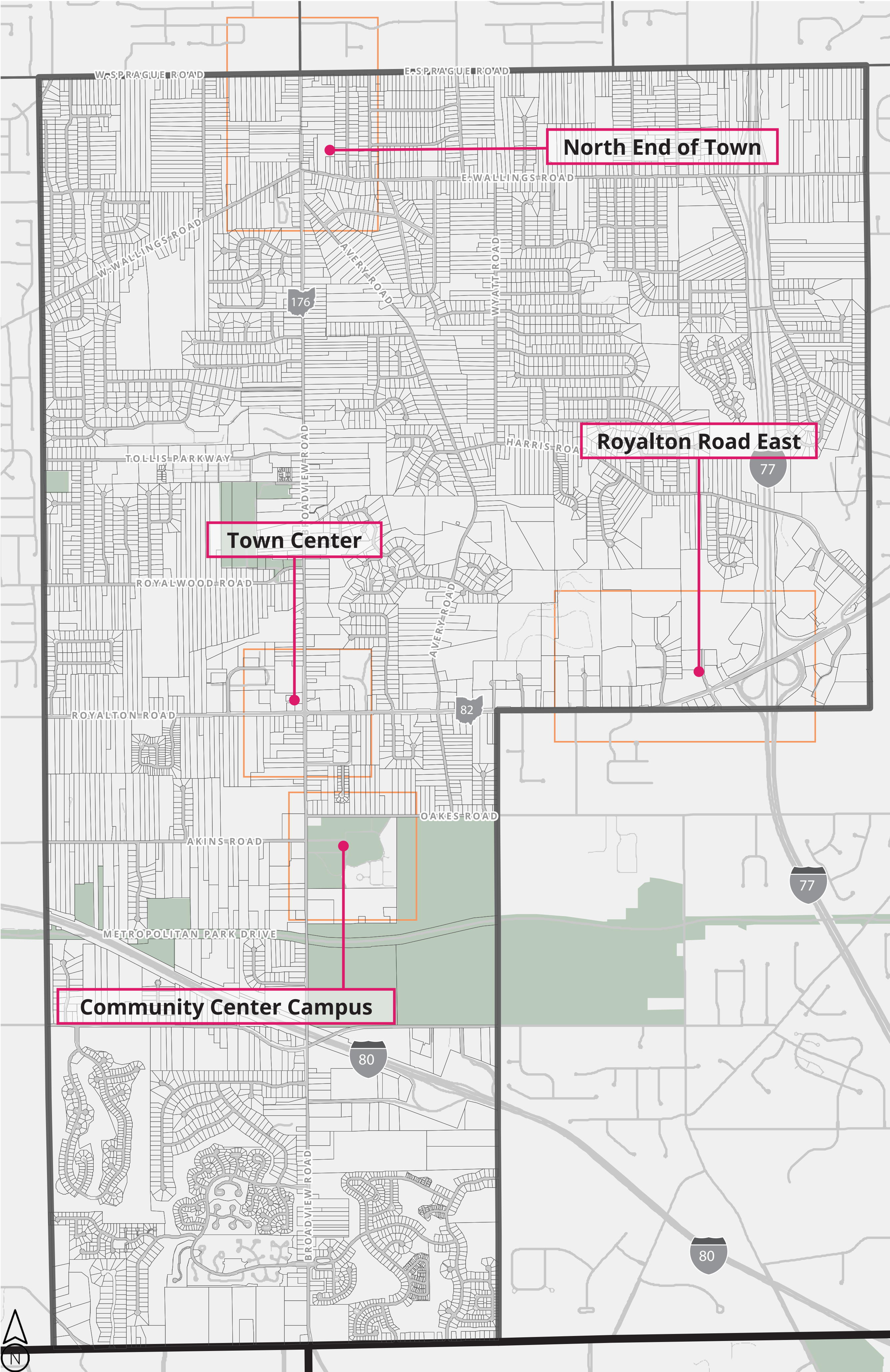
STATION 7 | CONNECTIVITY

INSTRUCTIONS

We want to know **YOUR** vision for connectivity within the community! Please write down any ideas or thoughts you have about connectivity and place them on sticky notes in the corresponding grey boxes below. There are no right or wrong answers, so write down any comments you have about the future of non-motorized connectivity within Broadview Heights and what you feel that should look like.

Additionally, you may also place a **RED** dot to identify where you live and place **GREEN** dots to identify locations you would like to have access to by walking or biking.

If you have questions or need further assistance, please find a County Planning representative to help guide you through this exercise.



Are there any specific concerns you have about walking or biking throughout the community?

Which streets or intersections within the City of Broadview Heights should be improved to safely accommodate pedestrians and bicyclists?

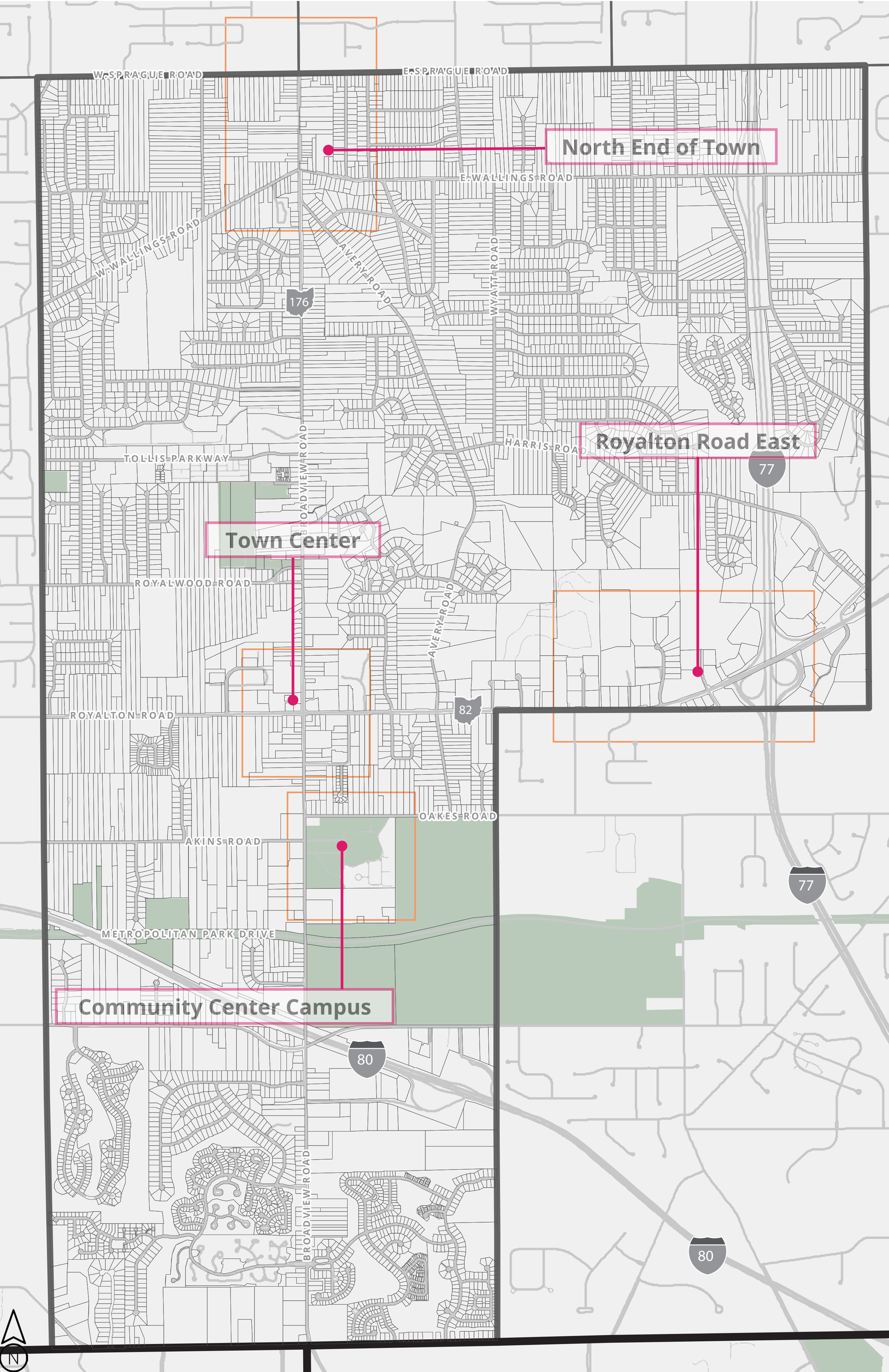
STATION 7 | TRANSPORTATION

INSTRUCTIONS

We want to know **YOUR** vision for transportation within the community! Please write down any ideas or thoughts you have about transportation and place them on sticky notes in the corresponding grey boxes below. There are no right or wrong answers, so write down any comments you have about the future of motorized transportation within Broadview Heights and what you feel that should look like.

Additionally, you may also place **GREEN** dots to identify specific roads or intersections that you feel need repairs, improvements, or other enhancements.

If you have questions or need further assistance, please find a County Planning representative to help guide you through this exercise.



Are there any specific concerns you have about driving or using public transit throughout the community?

Which streets or intersections within the City of Broadview Heights should be improved?

STATION 8 | COMMUNITY CHARACTER

Community character helps create memorable places that people will want to return to. Physical amenities, such as sidewalks, landscaping, and gathering spaces, are important components to creating a thriving community. The City of Broadview Heights offers a number of amenities and services to its residents and continues to build upon continued successes by providing a new, state-of-the-art Community & Recreation Center.

INSTRUCTIONS

We want to know **YOUR** opinions about community character! Please write down any ideas or thoughts you have about community character and place them on sticky notes in the corresponding grey box below. There are no right or wrong answers, so write down any comments you have about the community character within Broadview Heights and what you feel that should look like.

If you have questions or need further assistance, please find a County Planning representative to help guide you through this exercise.



What types of facilities or amenities would **YOU** like to see implemented throughout the community? Please explain your ideas or comments.



STATION 8 | COMMUNITY CHARACTER

INSTRUCTIONS

We want to know **YOUR** opinions about community character! Please write down any ideas or thoughts you have about community character and place them on sticky notes in the corresponding grey boxes below. There are no right or wrong answers, so write down any comments you have about the community character within Broadview Heights and what you feel that should look like.

If you have questions or need further assistance, please find a County Planning representative to help guide you through this exercise.

What do you **LIKE** about the streetscapes within the City of Broadview Heights?

What would you like to see **CHANGE** about the streetscapes within the City of Broadview Heights?

What is one **WORD** that you would use to describe the character of Broadview Heights?