

STATION NUMBER ①

MY VISION FOR WOODMERE IS....

WHAT IS A COMMUNITY VISION?

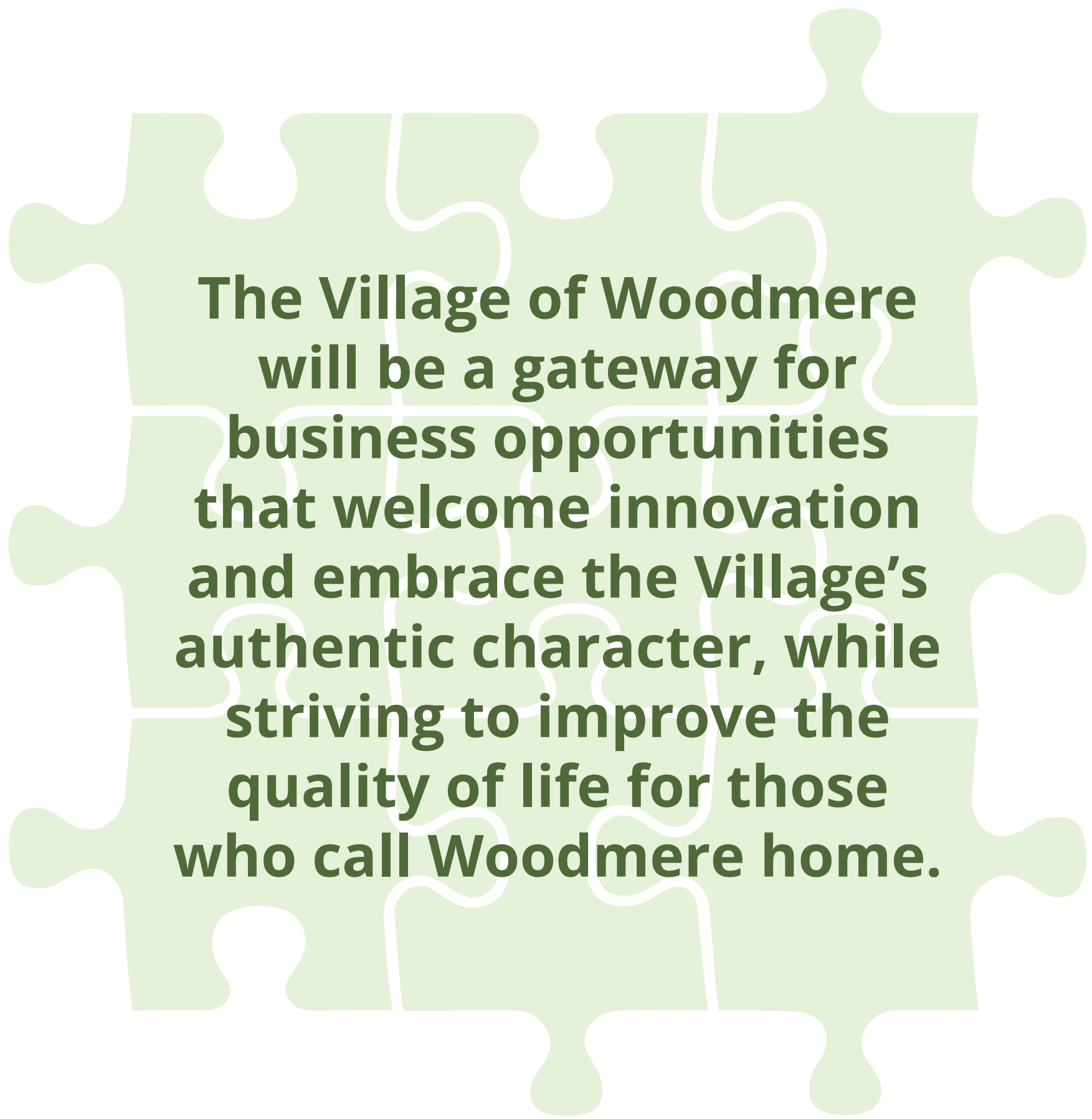
We are building our Community Vision—our vision for the future—together. It is as broad and bold as we agree it should be, and we will use our Community Vision to develop specific goals and actions for this Master Plan. Our Community Vision is based on foundational conversations with the community. It will describe generally what Woodmere looks and feels like for those of us who live, work, and visit the Village today, and will seek to continue the best that Woodmere offers into the future—plentiful business opportunities, strong character, and immense potential that are the bedrock of this community. These core themes will be reinforced and sustained by the Community Vision.

HOW IS THE COMMUNITY VISION FORMED?

The vision was developed based on the Current Conditions analysis and input from both the Village and Steering Committee.

We need your feedback! Below is a draft vision statement for Woodmere. Tell us if this matches your vision for what the Village of Woodmere strives for over the next ten years. Please write your vision or ideas down on a sticky note and place it in the grey box below.

OVER THE NEXT
TEN YEARS:



DOES THIS MATCH YOUR VISION FOR THE COMMUNITY?

What is *YOUR* vision for the Village of Woodmere?

STATION NUMBER ②

OBJECTIVES

WHAT IS A VISION OBJECTIVE?

While the vision is a foundation for the future, objectives are specific tools that help the community achieve that vision. These objectives will then be applied to both “Investment Areas” and “Investment Corridors” to ensure everything is working together towards the community’s desired vision.

Please review the objectives listed below. Write any comments on sticky notes and place them in the corresponding grey comment box for each objective.

Do these objectives help achieve your vision for the Village in the future?
Is there anything missing?



CAREER DIVERSITY
BUILD UPON ASSETS TO GROW
PROFESSIONAL EMPLOYMENT
OPPORTUNITIES

Our objective is to utilize the community’s ideal location and established assets to promote the Village for professional offices, corporate headquarters, and startups where employers can take advantage of the region’s amenities.



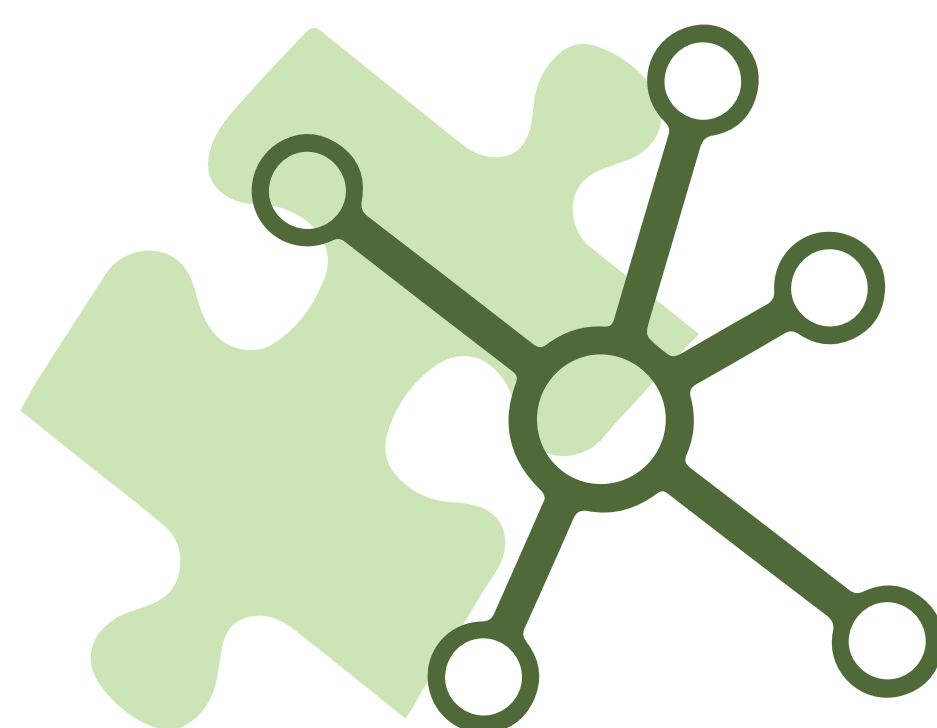
RETAIL
REINFORCE OUR UNIQUE RETAIL
DESTINATIONS

Our objective is to re-energize existing retail spaces with events and features that attract people, provide authentic and enjoyable places, support local businesses, and prepare for the changing retail environment.



TRANSPORTATION
ENHANCE ALTERNATIVE TRANSPORTATION
OPTIONS WHILE MAINTAINING WHAT WE
HAVE

Our objective is to use innovative technology and techniques to enhance and encourage transportation choice, while continuing to provide a well-maintained road network within the community.



CONNECTIVITY
CONNECT RESIDENTS & VISITORS TO OUR
VIBRANT CIVIC CORE

Our objective is to improve the Village’s pedestrian and bicycle network by providing an accessible system of all-purpose trails, sidewalks, and other facilities to make community destinations more accessible.

STATION NUMBER ②

OBJECTIVES

WHAT IS A VISION OBJECTIVE?

While the vision is a foundation for the future, objectives are specific tools that help the community achieve that vision. These objectives will then be applied to both “Investment Areas” and “Investment Corridors” to ensure everything is working together towards the community’s desired vision.

Please review the objectives listed below. Write any comments on sticky notes and place them in the corresponding grey comment box for each objective.

Do these objectives help achieve your vision for the Village in the future?
Is there anything missing?



HOUSING
PROVIDE A DIVERSE RANGE OF HOUSING
OPTIONS

Our objective is to provide diverse housing types and styles at attainable price points to accommodate residents of any age or ability to find a high-quality home that fits their needs and lifestyle.



CHARACTER
EMBRACE AND MARKET OUR NEW
CHARACTER

Our objective is to support development that fits Woodmere’s identity and to actively market its community brand throughout the Village.



SUSTAINABILITY
STRENGTHEN THE VILLAGE’S POSITION ON
SUSTAINABLE DEVELOPMENT

Our objective is to continue to support green and sustainable development that utilizes natural systems and environmentally friendly design to improve stormwater management, maximizes the use of energy systems, and improves the lives of residents.



REGIONAL COLLABORATION
WORK COLLABORATIVELY WITH REGIONAL
NEIGHBORS AND PARTNERS

Our objective is to continue regional partnerships for providing superior services to residents, visitors, and businesses in a streamlined and accessible manner.

STATION NUMBER ③

INVESTMENT AREAS & CORRIDORS

WHAT ARE INVESTMENT AREAS & CORRIDORS?

The Investment Areas and Corridors are locations within Woodmere that will be given special attention during following phases of the Master Plan. This may include more detailed analysis in these areas, requests for additional public input, further interviews with area stakeholders, and more detailed development plans or renderings. Each investment area is unique and therefore will be studied individually.

WHY WERE THESE AREAS CHOSEN?

The initial investment areas were chosen based on numerous factors. Chief among these factors, however, was input from the Village and Steering Committee that identified areas with an existing mix of uses, areas that have had impacts on surrounding neighborhoods, and areas that have potential to change.

Please review the focus areas listed below. Write any comments on sticky notes and place them in the corresponding grey comment box for each area.

What do you like about each Investment Area and Corridor?
What would you like to change?

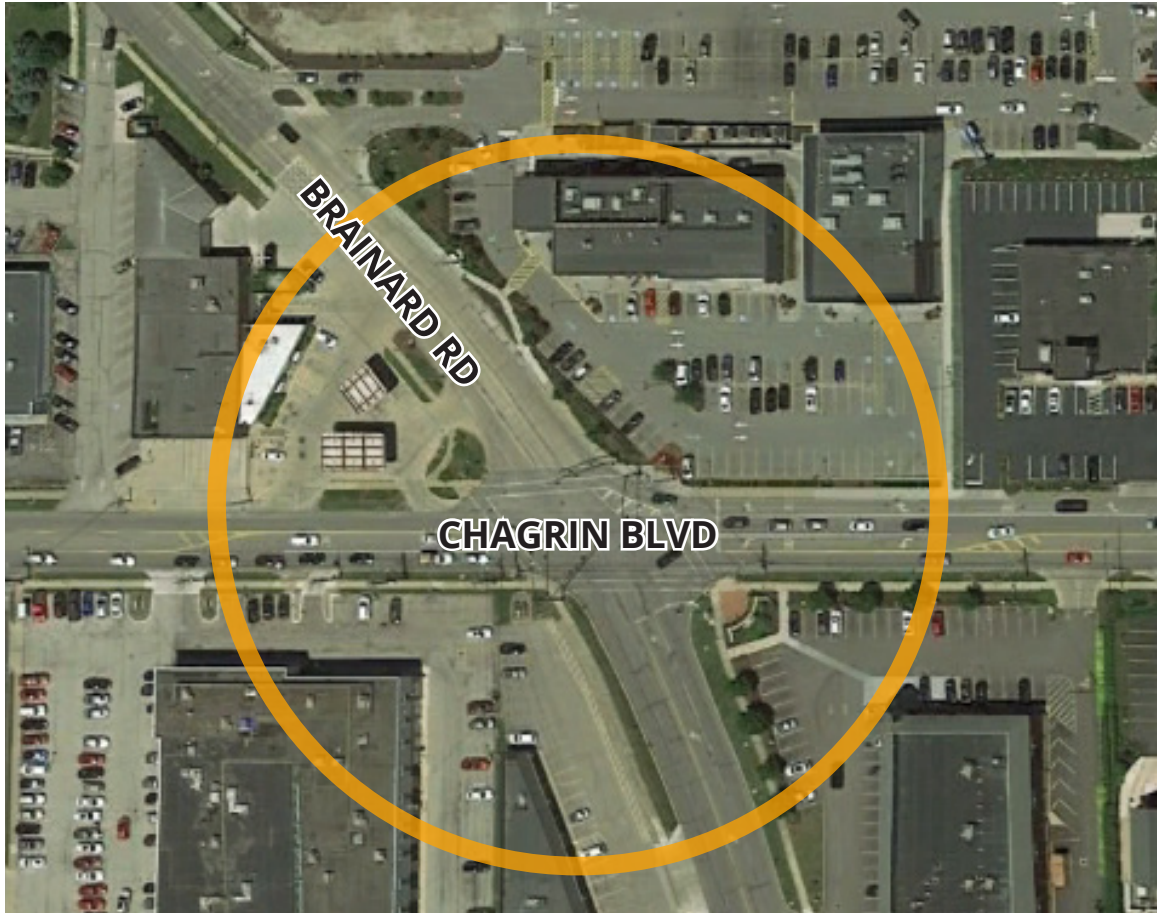
1

VILLAGE
SQUARE & I-271
INTERCHANGE



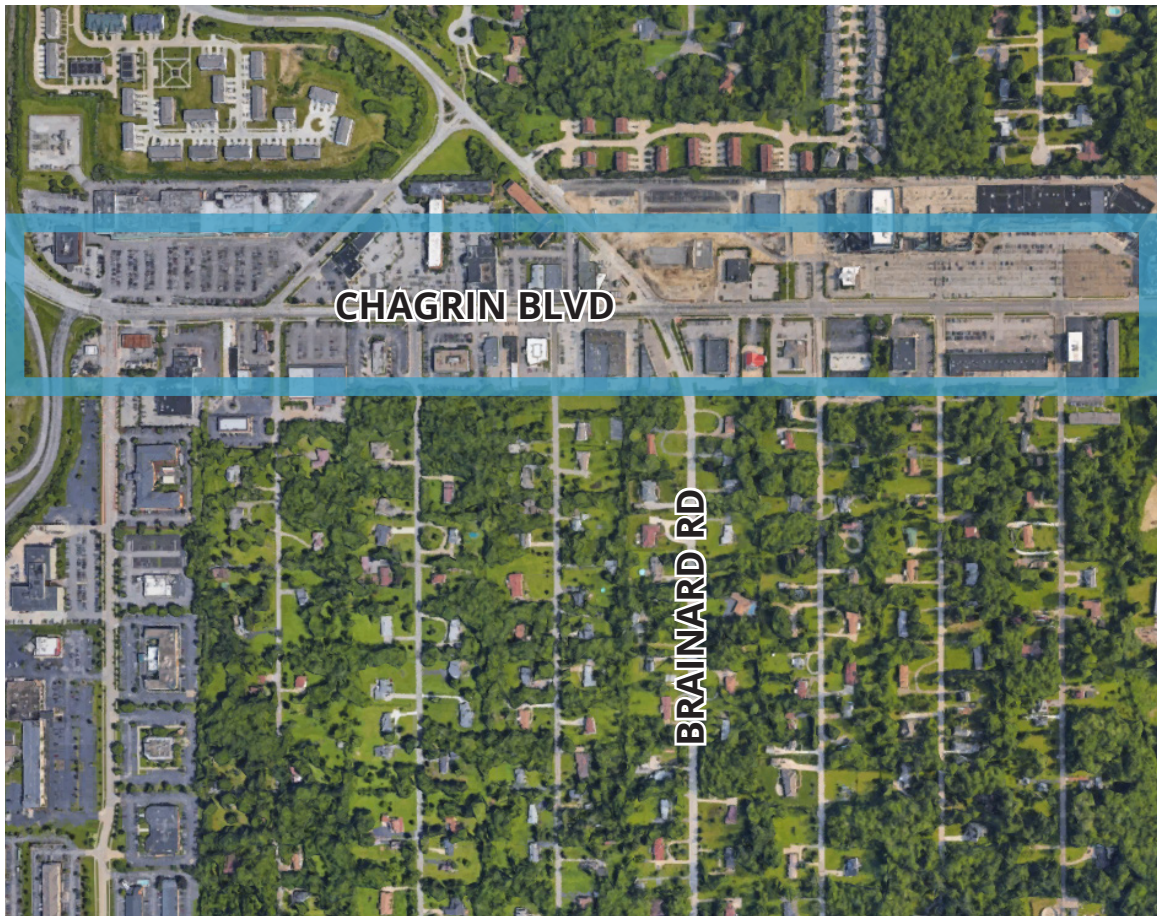
2

CHAGRIN BLVD
& BRAINARD
ROAD
INTERSECTION



3

CHAGRIN
BOULEVARD



4

BRAINARD
ROAD



STATION NUMBER ③

INVESTMENT AREAS & CORRIDORS
LOCATION MAP

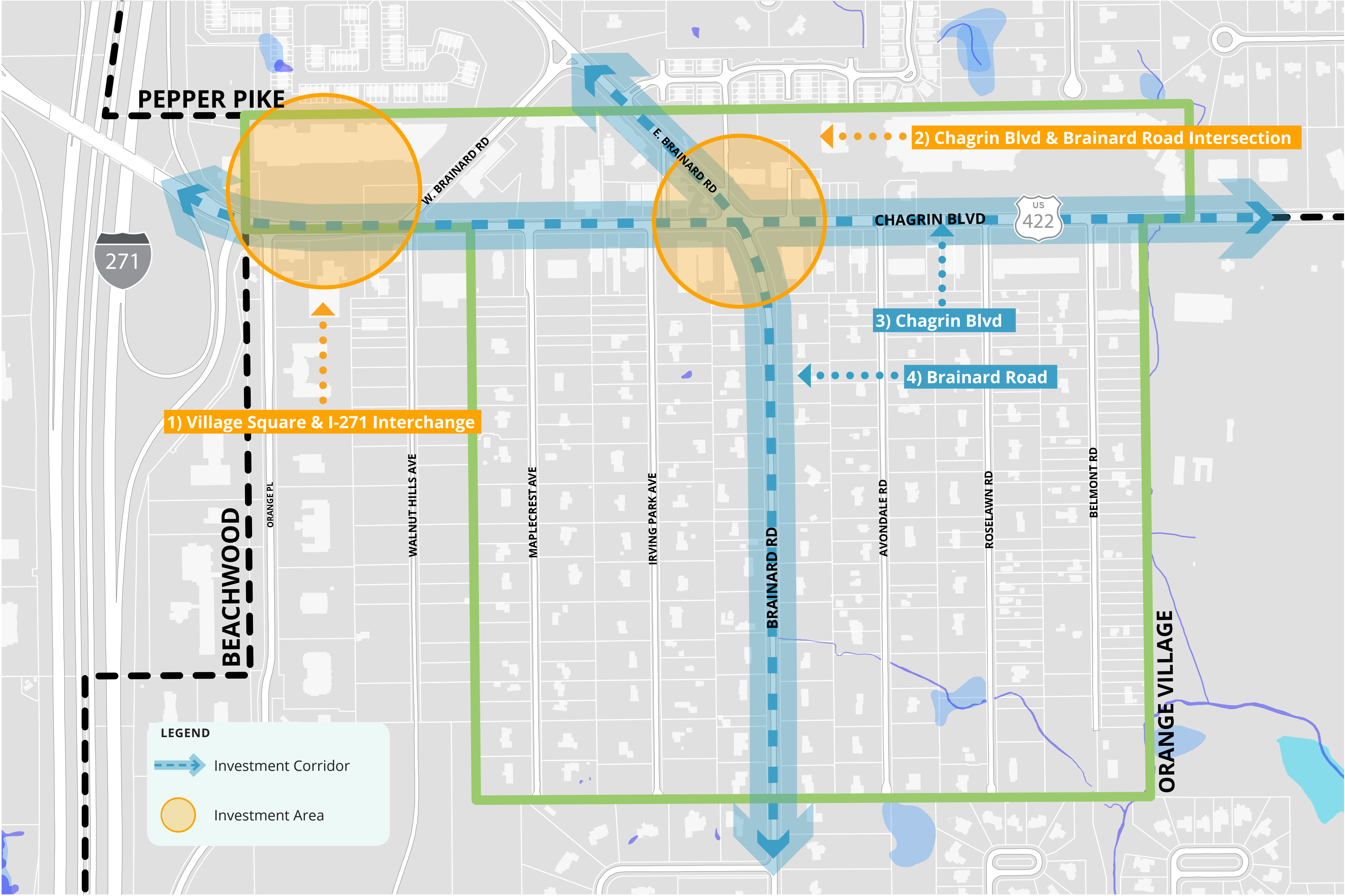
WHAT ARE INVESTMENT AREAS & CORRIDORS?

The Investment Areas and Corridors are locations within Woodmere that will be given special attention during following phases of the Master Plan. This may include more detailed analysis in these areas, requests for additional public input, further interviews with area stakeholders, and more detailed development plans or renderings. Each investment area is unique and therefore will be studied individually.

WHY WERE THESE AREAS CHOSEN?

The initial investment areas were chosen based on numerous factors. Chief among these factors, however, were input from the Village and Steering Committee, areas with an existing mix of uses, areas that have had impacts on surrounding neighborhoods, and areas that have potential to change.

Please review the map below and place any additional comments in the grey box.



Are there other Investment Areas and Corridors that the Master Plan should consider?

STATION NUMBER ③

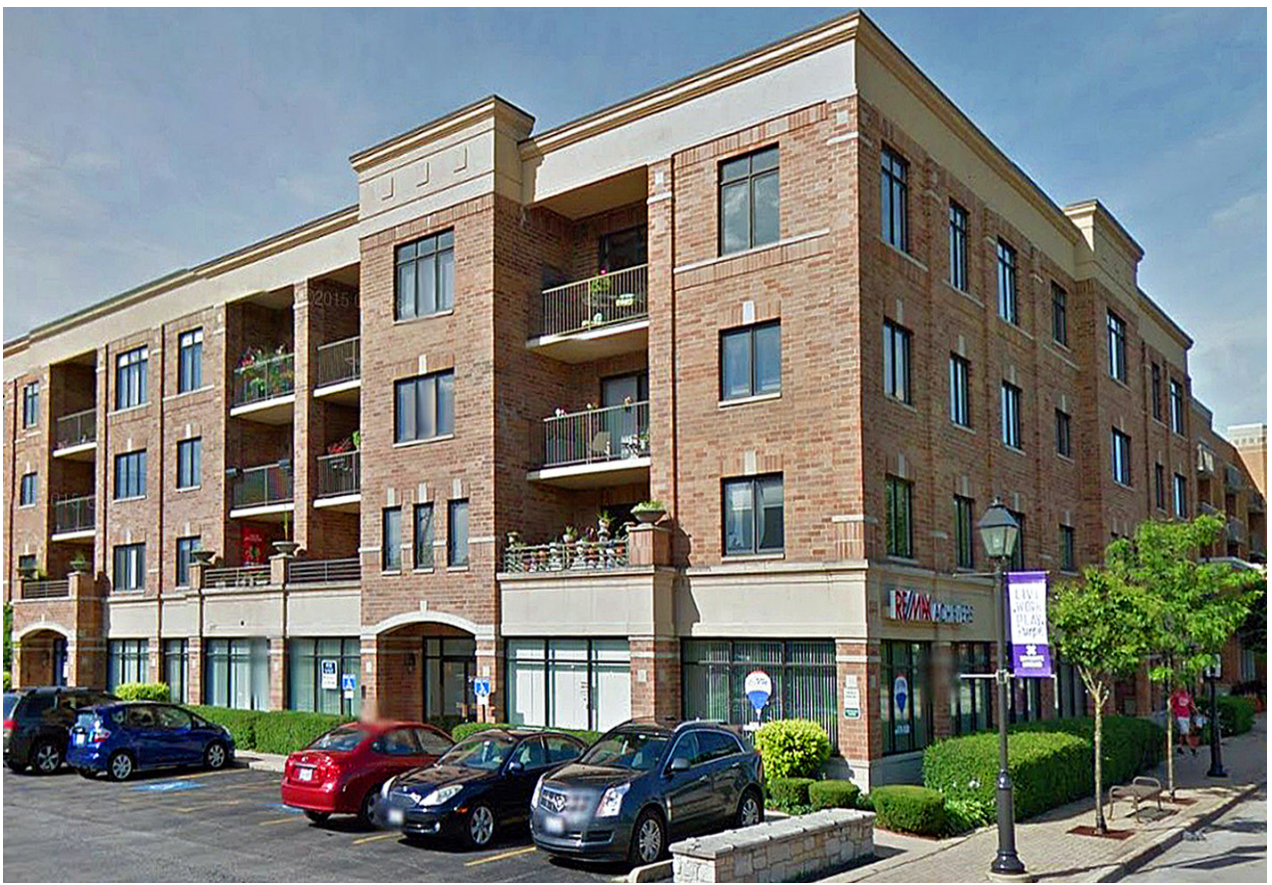
INVESTMENT AREAS |

VILLAGE SQUARE & I-271 INTERCHANGE

WHY WAS THE VILLAGE SQUARE & I-271 INTERCHANGE SITE CHOSEN?

This intersection was selected as an Investment Area due to its “gateway” location into the community. This area generally sees well over 35,000 vehicles everyday and provides immense opportunity for further study to identify how best to attract more of these visitors into the Village to take part in all Woodmere has to offer.

Place a **GREEN** dot to indicate which building types and styles you feel would be most appropriate for the Village of Woodmere at the Village Square & I-271 Interchange site.



Why did you select the images you did? Are there other types of buildings or uses you would like to see?

STATION NUMBER ③

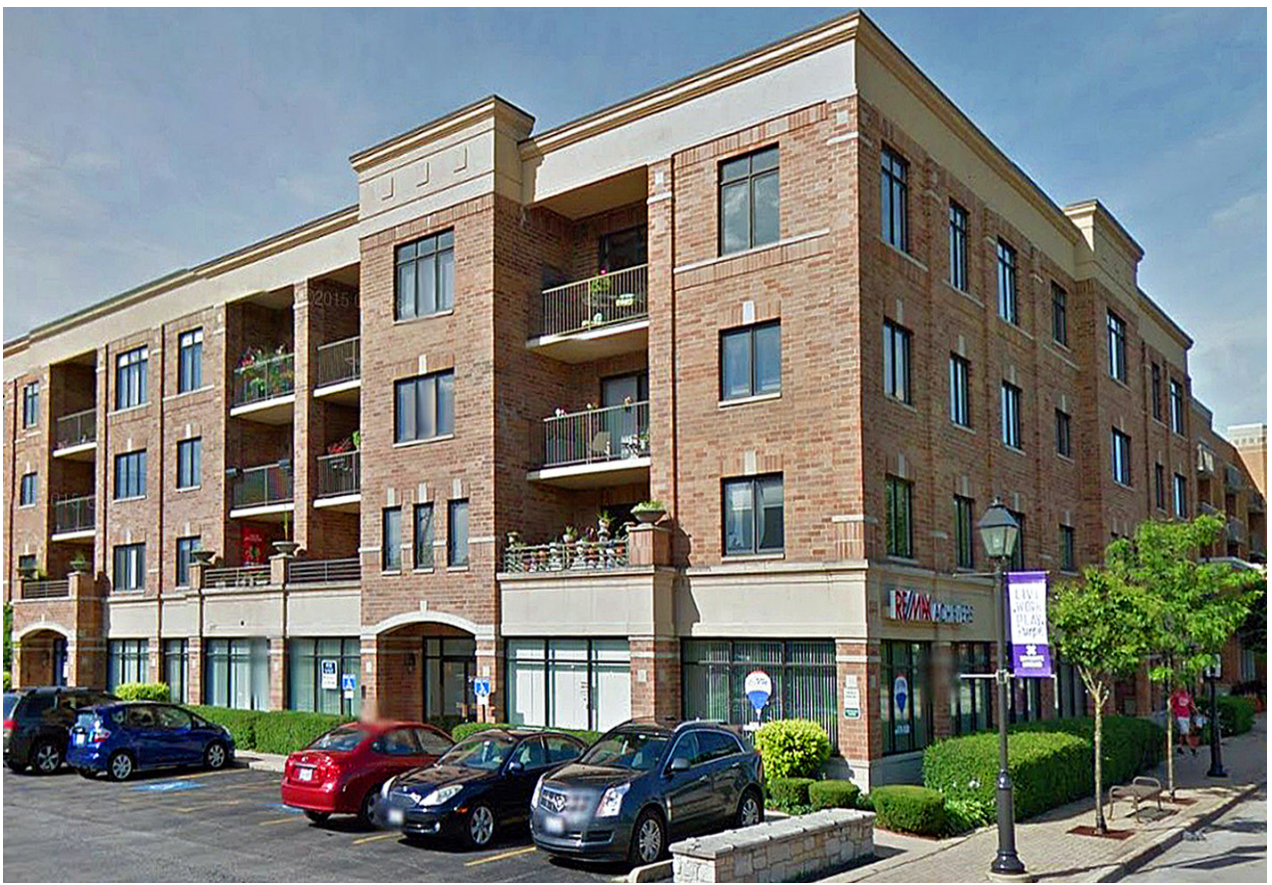
INVESTMENT AREAS |

CHAGRIN BLVD & BRAINARD RD INTERSECTION

WHY WAS THE CHAGRIN BOULEVARD & BRAINARD ROAD INTERSECTION SITE CHOSEN?

This intersection was selected as an Investment Area due to its centralized and prominent location within the Village. It is mixed-use hub for activity with a prime location for community interaction, which should be looked at more closely to see how these assets could be further enhanced an utilized in the future to achieve the community's vision.

Place a **GREEN** dot to indicate which building types and styles you feel would be most appropriate for the Village of Woodmere at the Chagrin Boulevard & Brainard Road intersection site.



Why did you select the images you did? Are there other types of buildings or uses you would like to see?

STATION NUMBER 4

COMMUNITY IDENTITY |

EVENTS, ACTIVITIES & FESTIVALS

WHAT TYPES OF EVENTS, ACTIVITIES, FESTIVALS OR OTHER COMMUNITY GATHERINGS WOULD YOU LIKE TO SEE IN WOODMERE?

Community events, activities, festivals, and other types of gatherings are great ways to bring residents together. By creating these types of social interactions the Village not only creates a way to promote and enhance the quality of life for residents, but it also builds social equity, engagement, and helps reinforce the community's sense of place.

Place a **GREEN** dot to indicate which types of activities you would most like to see held within the Woodmere community throughout the year.



Pop-Up Shopping/Outdoor Market



Music & Food Events



Farmer's Markets



Outdoor Art/Craft Shows



Job/Employment Fairs



Seasonal Events/Festivals



School Events/Fundraisers



Community/Neighborhood Gardening



Carnivals/Kid Friendly Events



Community Chalk Walks



Community Cook-Offs



Music Festivals

Why did you select the images you did? Are there other types of events you would like to see?

STATION NUMBER ④

COMMUNITY IDENTITY |
BRANDING, EXPERIENCE & IMAGE

DO YOU ENJOY THE EXPERIENCE OF LIVING WITHIN, SHOPPING, OR VISITING WOODMERE?
The Village of Woodmere is often described as the “Gateway into the Chagrin Valley” that offers immense business potential. Woodmere’s image is the culmination of many aspects of the community: its residents, character, location, wealth of future potential, and other essential components, which all play a large role in defining the Village as it is today. Over time this image can evolve, and it is up to the community to follow closely with these trends to reinforce its relevance and be the catalyst for positive change in the future.

Please review the questions below about Community Identity within the community. Use a check mark (✓) to select “YES” or “NO” where appropriate and write any comments on sticky notes and place them in the corresponding grey comment boxes.

Do you feel welcomed upon entering the community? (Gateway signs welcome signs, lighting, etc.)	YES	NO	Please explain your selection.
Do you feel the Village has a consistent brand? (Logos, signs, etc.)	YES	NO	Please explain your selection.

What do you *LIKE OR ENJOY* most about the Village’s image? What would you *CHANGE*? Please explain your comments.



How do you feel other communities view Woodmere’s identity? Please explain your comments.



CONNECTIVITY | VILLAGE-WIDE

A well connected and accessible network of roadways, sidewalks and trails is imperative for residents to easily reach amenities, community facilities, or other various locations across the Village. Woodmere has a number of high-end and high-quality retail shops, outstanding Village services and departments, and is in very close proximity to other large regional amenities. However, some residents may not have a personal vehicle or are limited by physical accessibility needs, and it is important to ensure that all aspects of the community consider safe connections for persons of all ages, lifestyles, and physical abilities.

Please review the questions below about connectivity within the community. Write any comments on sticky notes and place them in the corresponding grey comment boxes.

1) Are there any specific concerns you have about walking, biking, driving, or using public transportation throughout the community?

2) Which streets could be improved to safely accommodate pedestrians and bicyclists? How should they be improved (lighting, sidewalks, signage, etc.)?

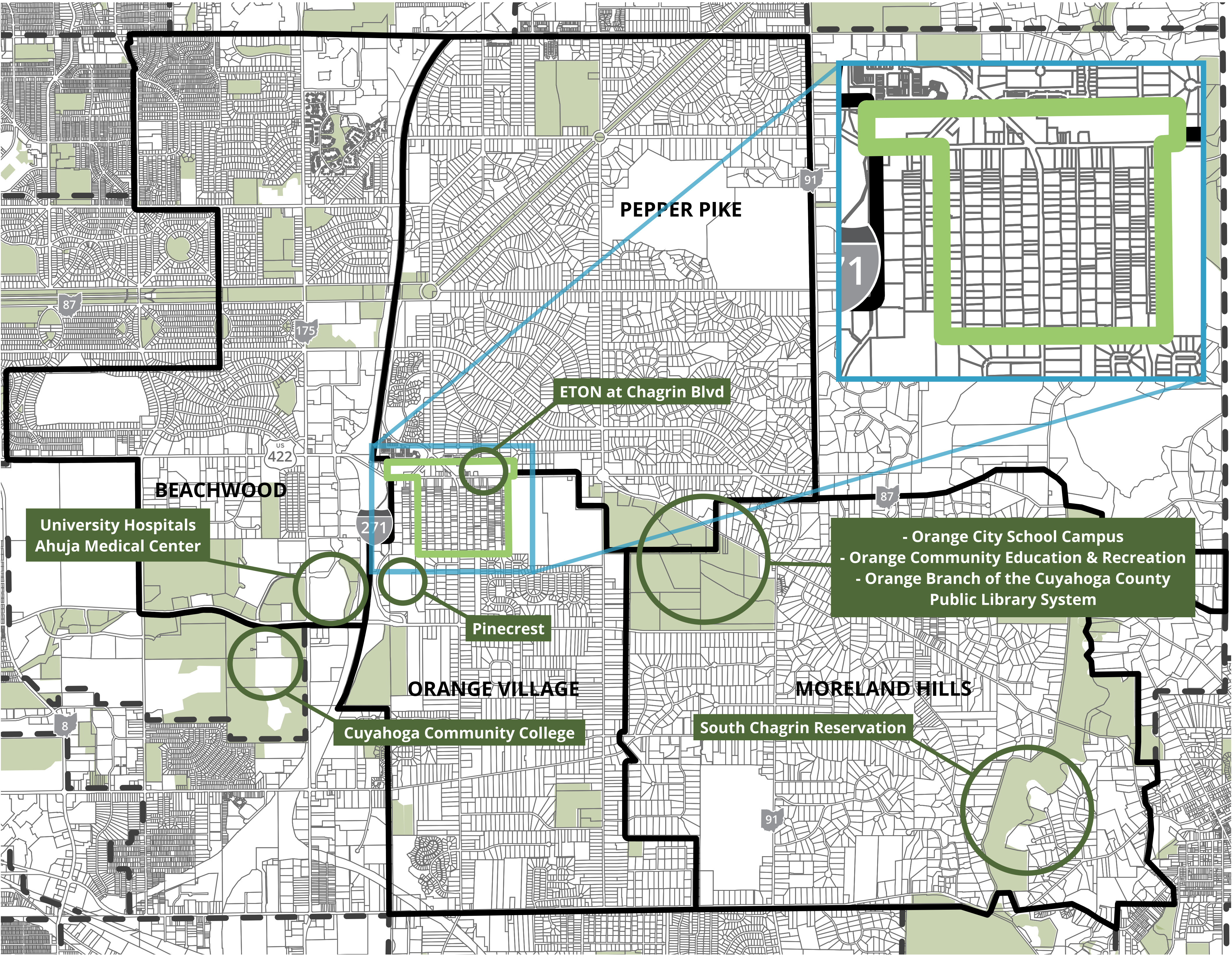
3) Do you feel comfortable walking along Chagrin Boulevard? Please explain why or why not.

CONNECTIVITY | REGIONAL

Please review the regional map below.

Use GREEN dots to identify locations that you *wish you could more easily access* by walking, biking, or using public transportation.

What areas or amenities do you wish you could more easily access by walking, biking, or using public transportation?



Are there any other concerns you have about connectivity within or around the Village?

EXISTING HOUSING | OPINIONS

Life-long communities provide housing options that meet the needs of residents of all ages, lifestyles, and physical abilities. Having a variety of housing types at various price points will not only encourage aging residents to seek suitable options within the community, but provide homes to younger families entering the community as well. We want to know what you think about the types of housing currently offered within the Village of Woodmere.

Please review the questions below about housing within the community. Write any comments on sticky notes and place them in the corresponding grey comment boxes.

1) What do you *LIKE* about the housing in the Village of Woodmere?

2) What would you *CHANGE* about the housing in the Village of Woodmere?

3) If you were to move, what would you look for in another home *OR* neighborhood?

STATION NUMBER ⑥

NEW HOUSING | TYPES & STYLES

WHAT TYPES OR STYLES OF HOMES WOULD YOU LIKE TO SEE OFFERED WITHIN THE VILLAGE OF WOODMERE?

Ensuring that a community has a variety of housing options at varying price points is an important component to creating a welcoming and an attainable community. Currently, Woodmere’s housing stock is relatively diverse and contains many different styles of architecture. We want to hear from you about the future of housing options within the community!

Place a **GREEN** dot to indicate which housing types and styles you feel would be most appropriate for the Village of Woodmere in the future.



Single-Family Detached



Single-Family Ranch Style



Bungalow Style



Duplex



Triplex



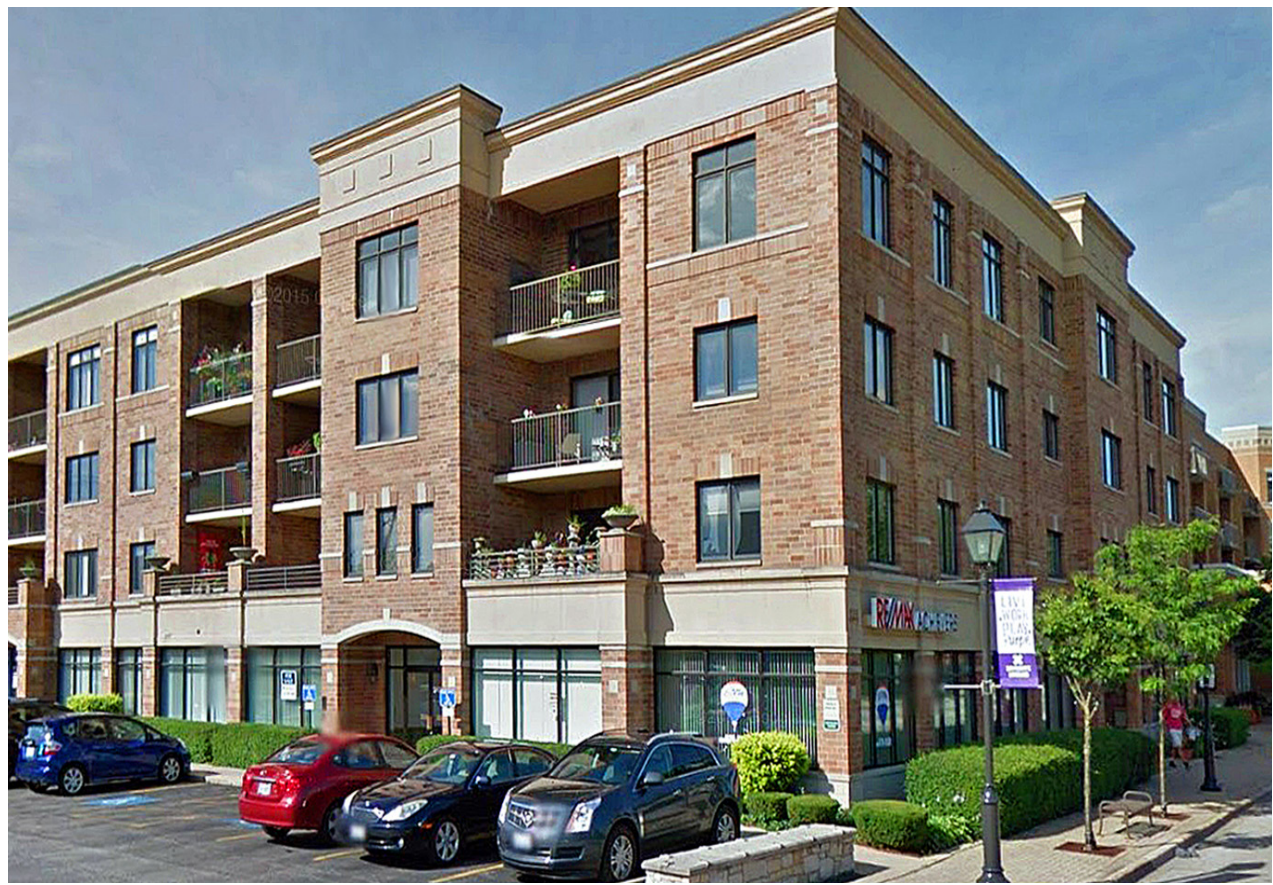
Multi-Family Attached



Townhouse



Row Home



Mixed-Use



Low Rise Condominiums/Apartments



Condominium/Apartment Complex



Cluster Housing

Why did you select the images you did? What other types of housing would you like to see?