

ENLIVEN KEY COMMERCIAL AREAS - MAPLE POINT

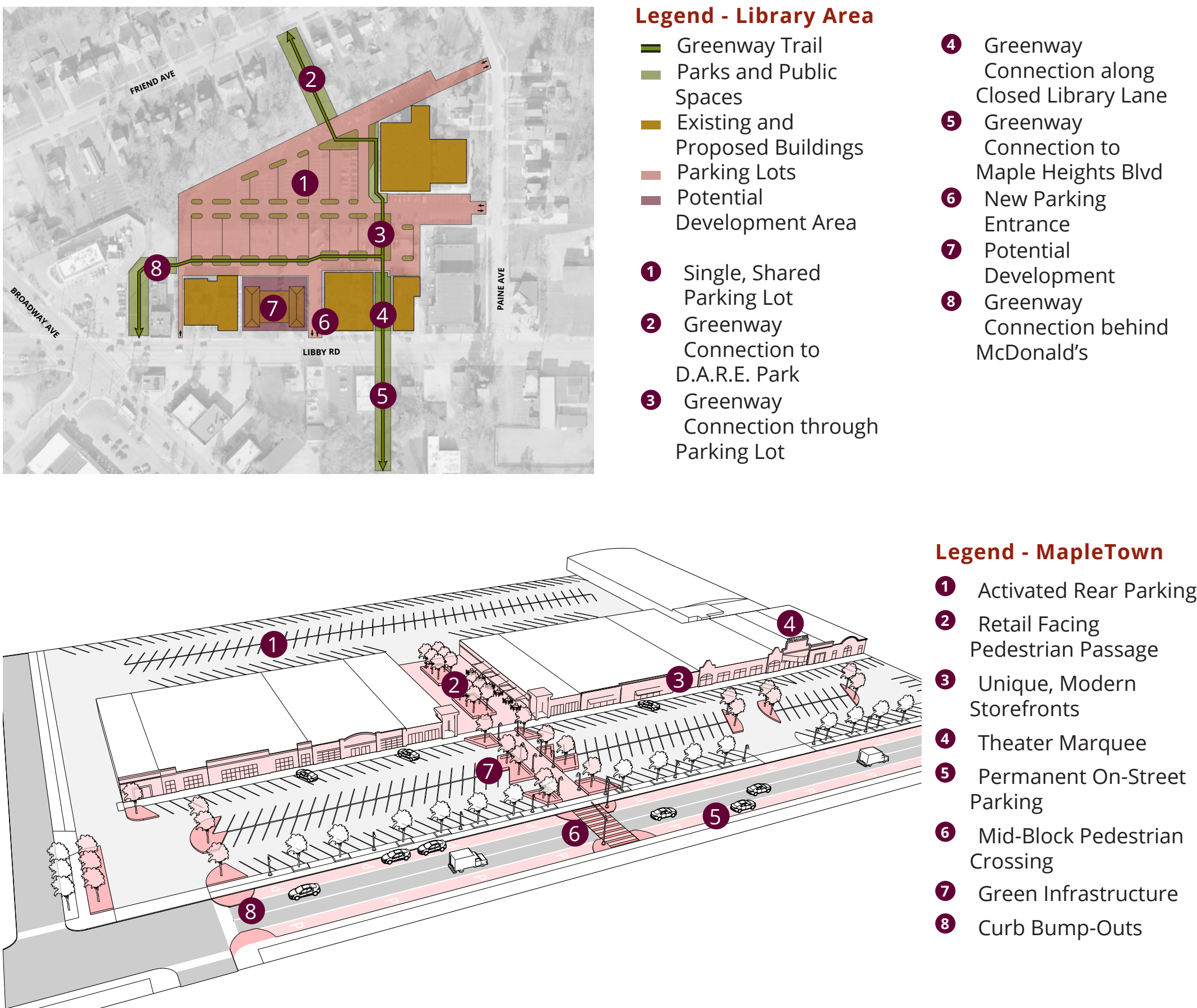
Review the map, images, and associated actions below. If you like the information, give it a “Thumbs Up” by placing a dot in the green box. If you do not like the information, give it a “Thumbs Down” by placing a dot in the red box. If you want to change an action, tell us how! Write a comment on a sticky note and place it in the grey box.



The triangle at Libby, Lee, and Broadway forms the center of Maple Heights. Its mix of community amenities such as the Library and Senior Center, civic institutions such as City Hall and the High School, and shopping areas provide the structure of a community downtown that should be fostered and grown – a place called Maple Point.

Potential Improvements

- A. Define the Area with Signs and Gateways
- B. Improve Major Streetscapes and Add Gateway Entrances
- C. Add and Improve Green Spaces
- D. Promote the Redevelopment of Target Areas
- E. Construct Trails into and through the Area

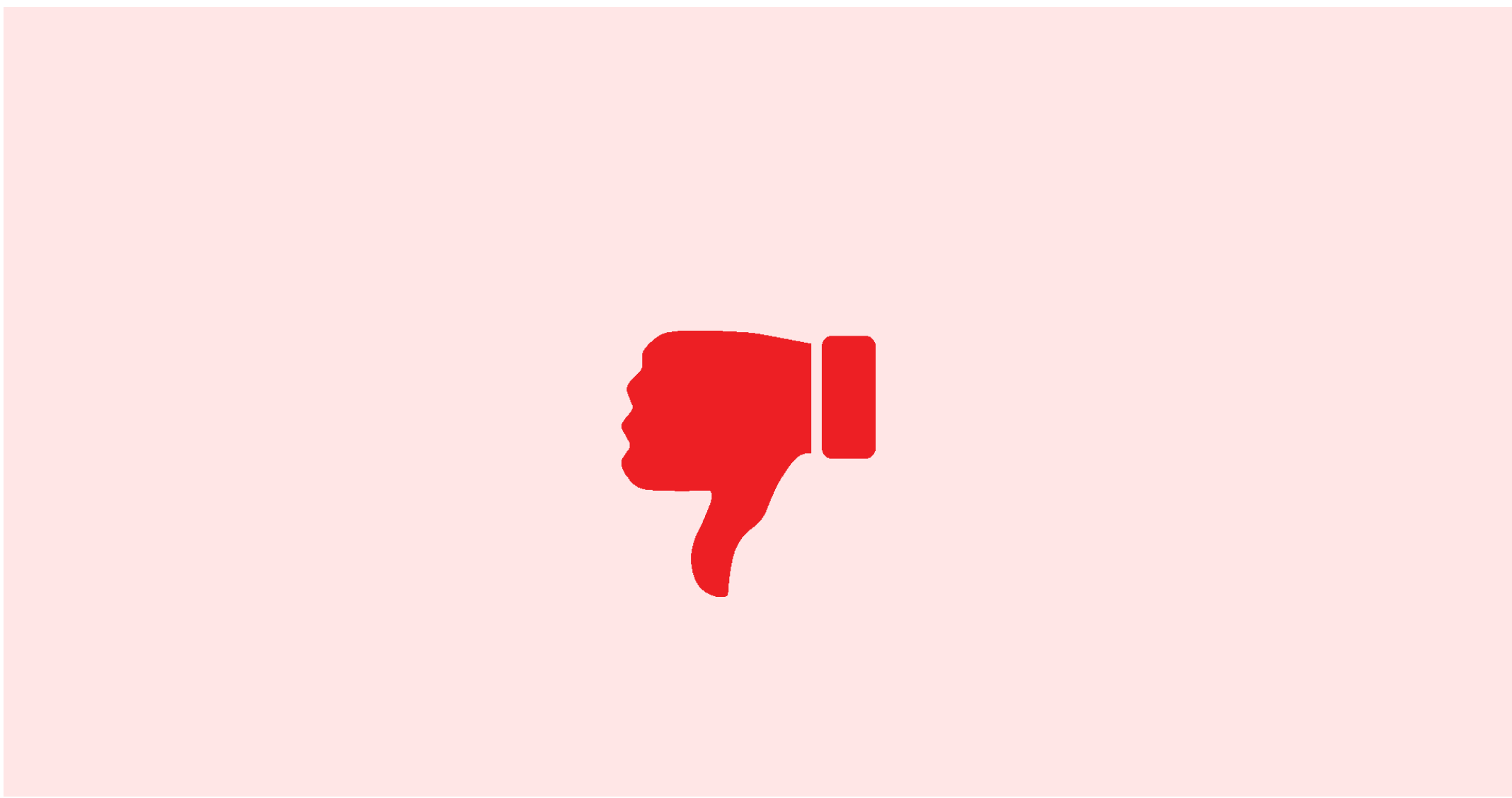


Do you like Component 1: Enliven Key Commercial Areas - Maple Point?

THUMBS UP?



THUMBS DOWN?



COMMENTS

ENLIVEN KEY COMMERCIAL AREAS - SOUTHGATE AREA

Review the map, images, and associated actions below. If you like the information, give it a “Thumbs Up” by placing a dot in the green box. If you do not like the information, give it a “Thumbs Down” by placing a dot in the red box. If you want to change an action, tell us how! Write a comment on a sticky note and place it in the grey box.

For many years, the Southgate area has been a commercial and economic driver in the City of Maple Heights. Today, it remains a viable retail destination with a mixture of local, regional, and national chains; however, the increase of online shopping has led to the decline of traditional “brick-and-mortar” shopping centers like Southgate U.S.A. Despite this trend, residents of Maple Heights would like to see the Southgate and its surrounding areas become a vibrant and sustainable neighborhood center again.

This goal outlines three proposed scenarios that aim to improve the pedestrian experience at Southgate, connect the shopping area with surrounding neighborhoods, and enliven the area through new development. The scenarios are intended to build upon each other over time.

Potential Improvements

Scenario 1: Pedestrian Improvements

- A. Complete an Internal Pedestrian Sidewalk System
- B. Build Sidewalk Links from the Shopping Center to Ring Roads
- C. Complete a Trail around Southgate
- D. Improve Streetscapes on Primary Streets
- E. Improve Primary Gateways & Intersections into Southgate

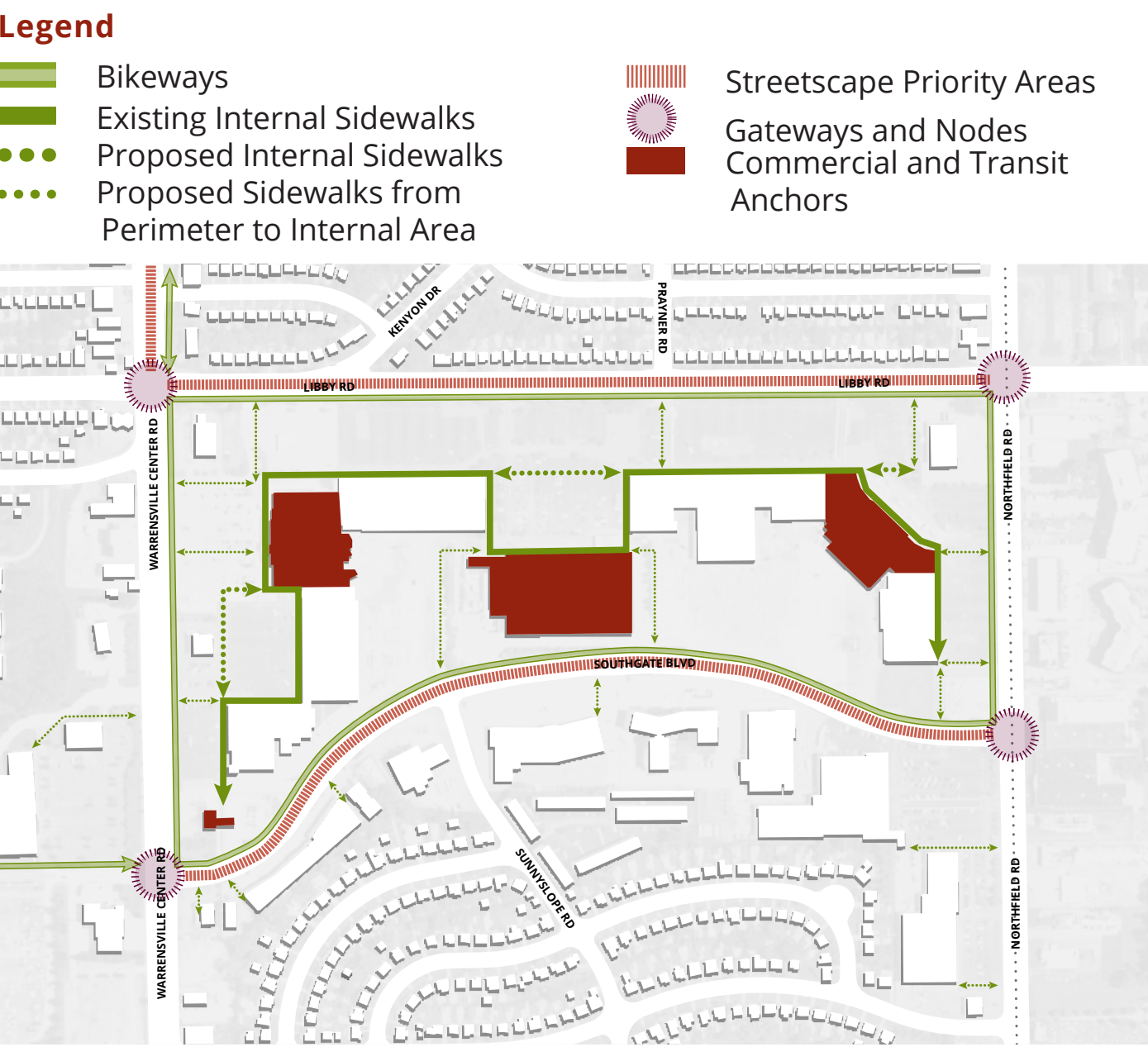
Scenario 2: New Street Network

- F. Consider New Roads through Southgate
- G. Promote Potential Development Areas behind Southgate

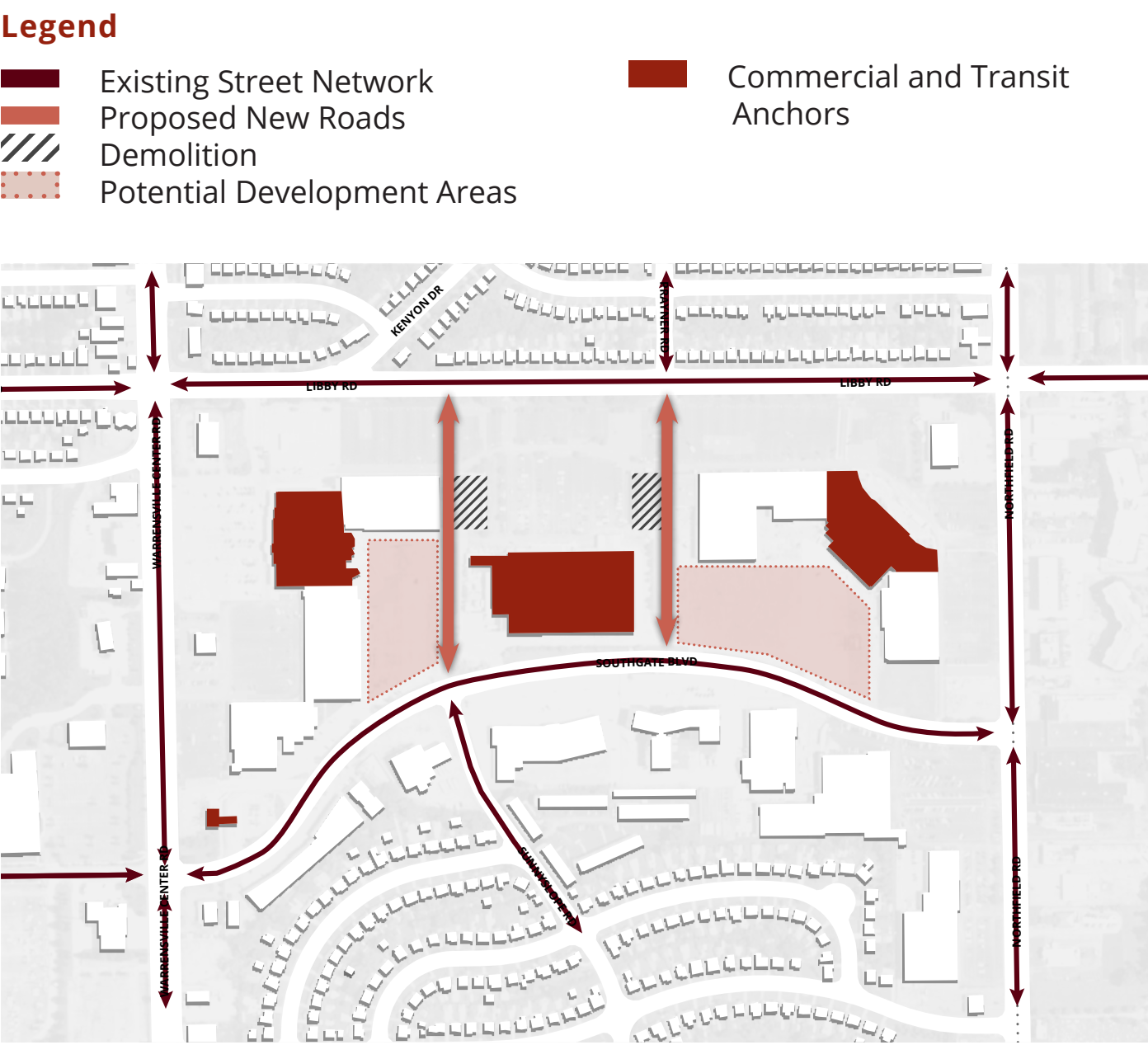
Scenario 3: Land Use Changes

- H. Concentrate Retail onto Major Corridors
- I. Add Mixed-Use Development into Southgate

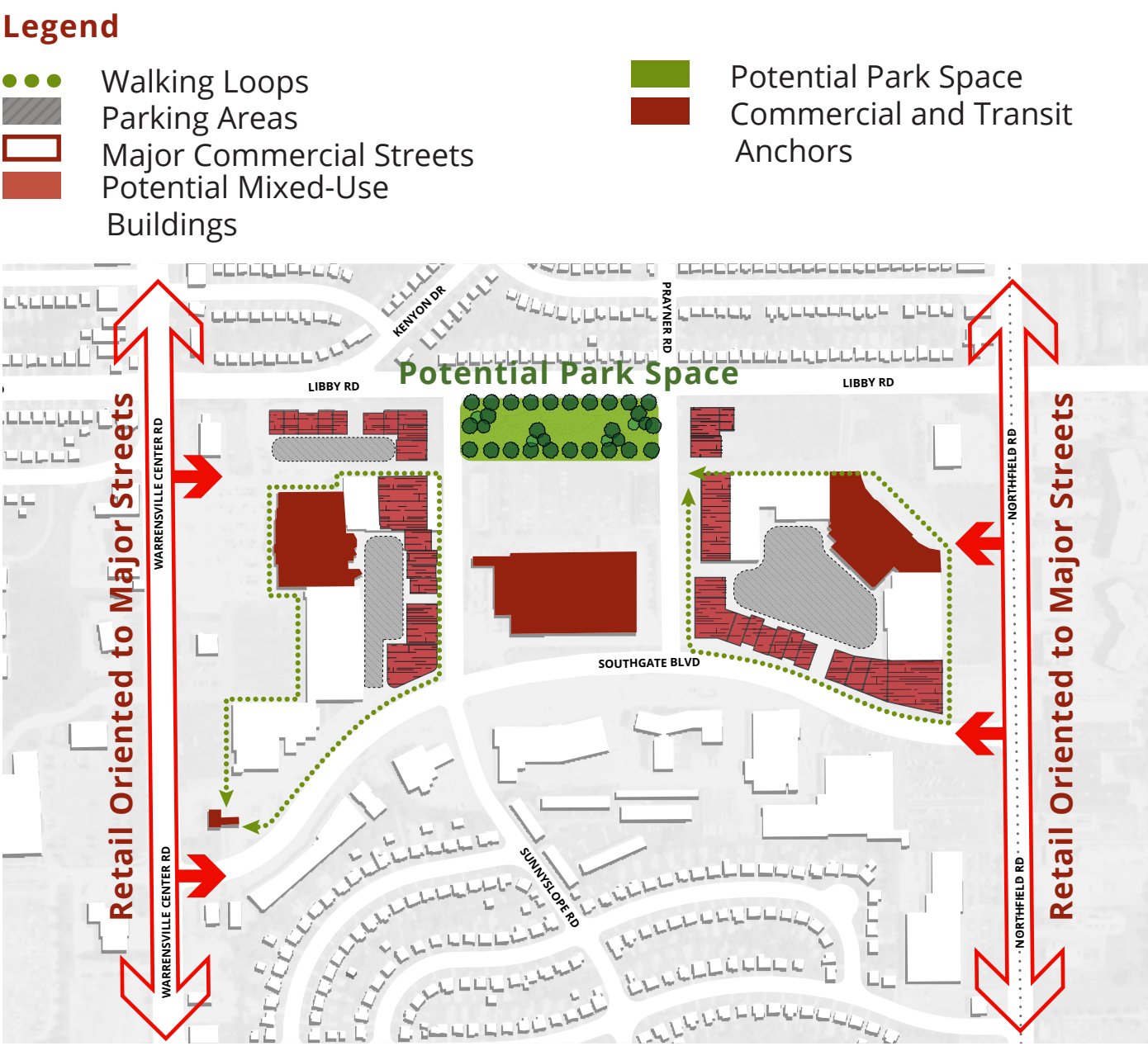
Scenario 1: Pedestrian Improvements



Scenario 2: New Street Network



Scenario 3: Land Use Changes



Do you like Component 1: Enliven Key Commercial Areas - Southgate Area?

THUMBS UP?



THUMBS DOWN?



COMMENTS

ENLIVEN KEY COMMERCIAL AREAS - TURNEY-DUNHAM

Review the map, images, and associated actions below. If you like the information, give it a “Thumbs Up” by placing a dot in the green box. If you do not like the information, give it a “Thumbs Down” by placing a dot in the red box. If you want to change an action, tell us how! Write a comment on a sticky note and place it in the grey box.



- Legend**
- Multi-Purpose Trail
 - Streetscape Priority Areas
 - Gateways and Nodes
 - Parks and Public Spaces
 - Potential Development Areas
 - Commercial Structures
 - 1 Turney-Dunham Plaza
 - 2 Vacant Parcels for Potential Residential or Open Space
 - 3 Vacant Parcel for Potential Retail Expansion
 - 4 Pedestrian and Bicycle Entrance to Park
 - 5 Vehicular Entrance to Park
 - 6 Future Trail Extension
 - 7 Trail to Metropark
 - 8 Trail to S Lee Road
 - 9 New Metropark
 - 10 Future Park Expansion

Supporting the western half of the city, the Turney-Dunham area is the crossroads of residential, recreation, and commercial uses, merging together to create a vibrant neighborhood and Maple Heights community.

Potential Improvements

- A. Support Park Enhancement and Expansion
- B. Improve Streetscape and Entrances into the District
- C. Promote Commercial, Housing, or Park Development on Vacant Parcels
- D. Construct Trails in the Park and Connecting to Neighborhoods

Do you like Component 1: Enliven Key Commercial Areas - Turney-Dunham?

THUMBS UP?



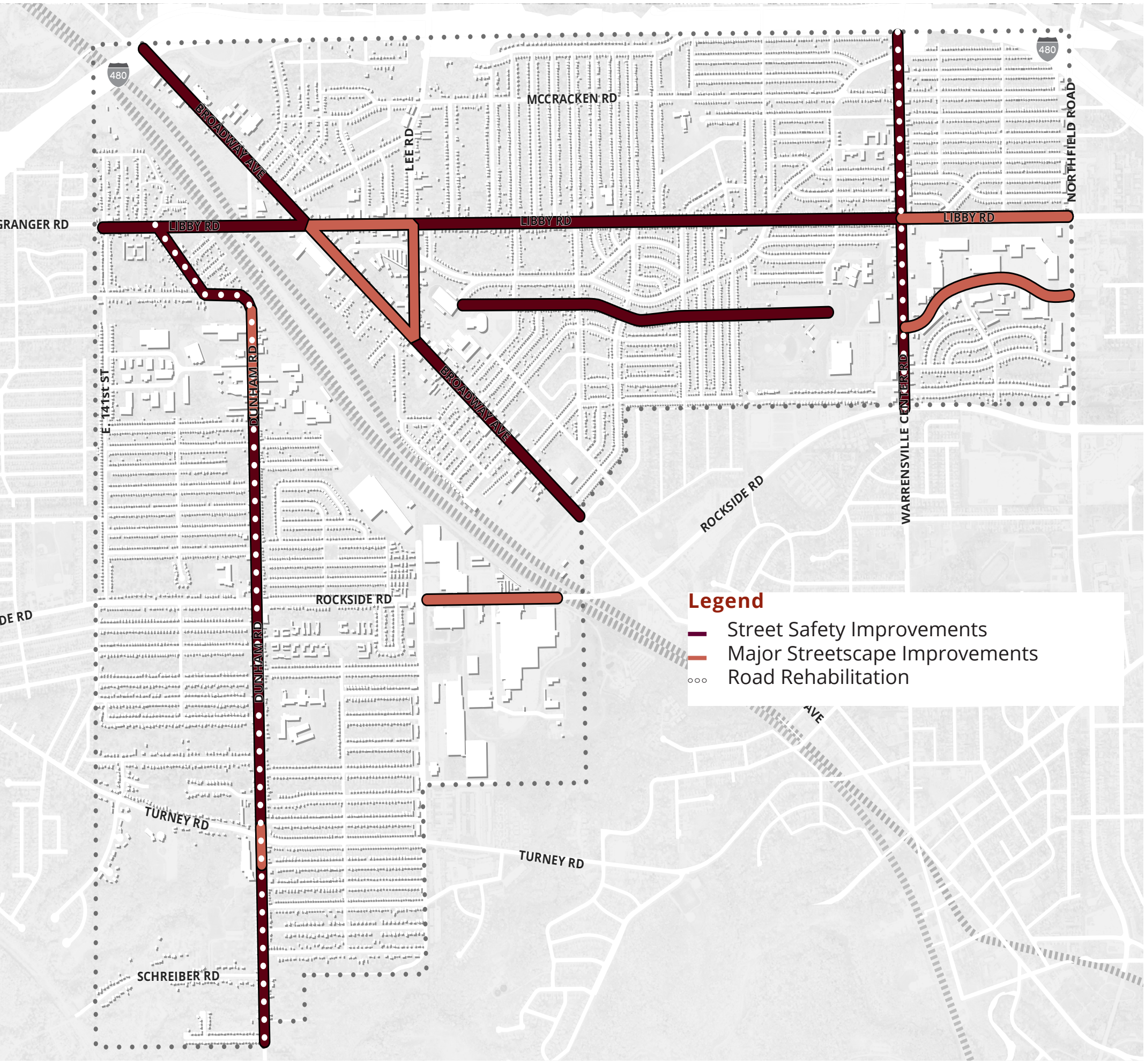
THUMBS DOWN?



COMMENTS

IMPROVE CONNECTIONS BETWEEN NODES AND WITH THE REGION

Review the map, images, and associated actions below. If you like the information, give it a “Thumbs Up” by placing a dot in the green box. If you do not like the information, give it a “Thumbs Down” by placing a dot in the red box. If you want to change an action, tell us how! Write a comment on a sticky note and place it in the grey box.



Streets make up a significant percent of any city. When those streets are attractive and well-maintained, they provide connections to shopping, service, and amenities. Maple Heights’ street environment could be improved through additions like street trees and lighting, and maintenance improvements could be facilitated through major street rehabilitation.

Potential Improvement

- A. Add Safety Features such as Crosswalks and Lighting in Areas Targeted for Safety Improvements
- B. Add Streetscape Elements in Areas Targeted for Major Streetscape Improvements
- C. Rehabilitate Critical Thoroughfares

SIDEWALK AMENITIES



SIGNAGE



LANDSCAPING



STREETSCAPE ELEMENTS

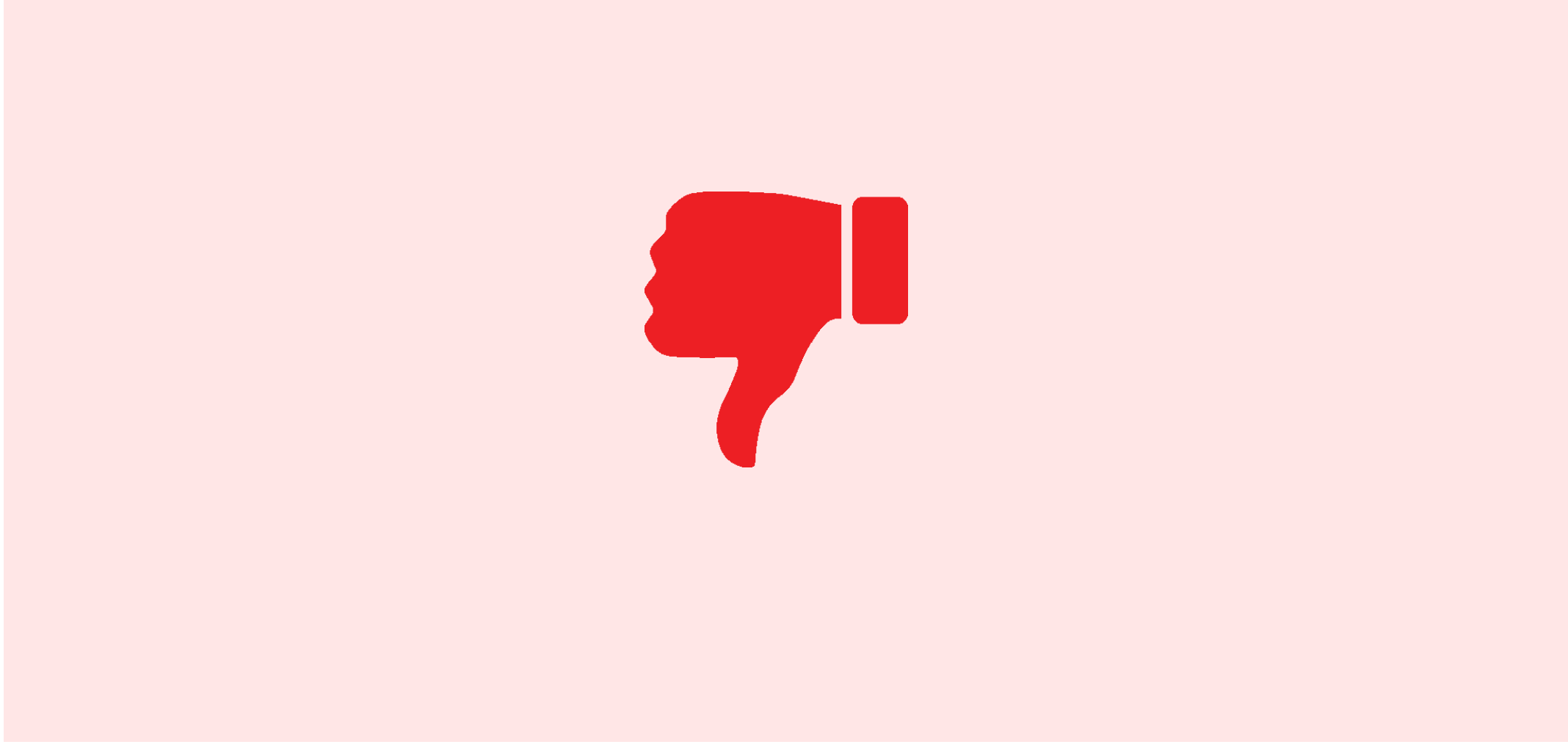
Streetscape elements vary for each community and street; however, standard elements include landscaping, trees, gateway and wayfinding signs, decorative sidewalks and crosswalks, planters, lighting, benches, and bike parking.

Do you like Component 2: Improve Connections Between Nodes and with the Region?

THUMBS UP?



THUMBS DOWN?



COMMENTS

DEVELOP NON-MOTORIZED CONNECTIONS

Review the map, images, and associated actions below. If you like the information, give it a “Thumbs Up” by placing a dot in the green box. If you do not like the information, give it a “Thumbs Down” by placing a dot in the red box. If you want to change an action, tell us how! Write a comment on a sticky note and place it in the grey box.



BRIDGE CROSSINGS

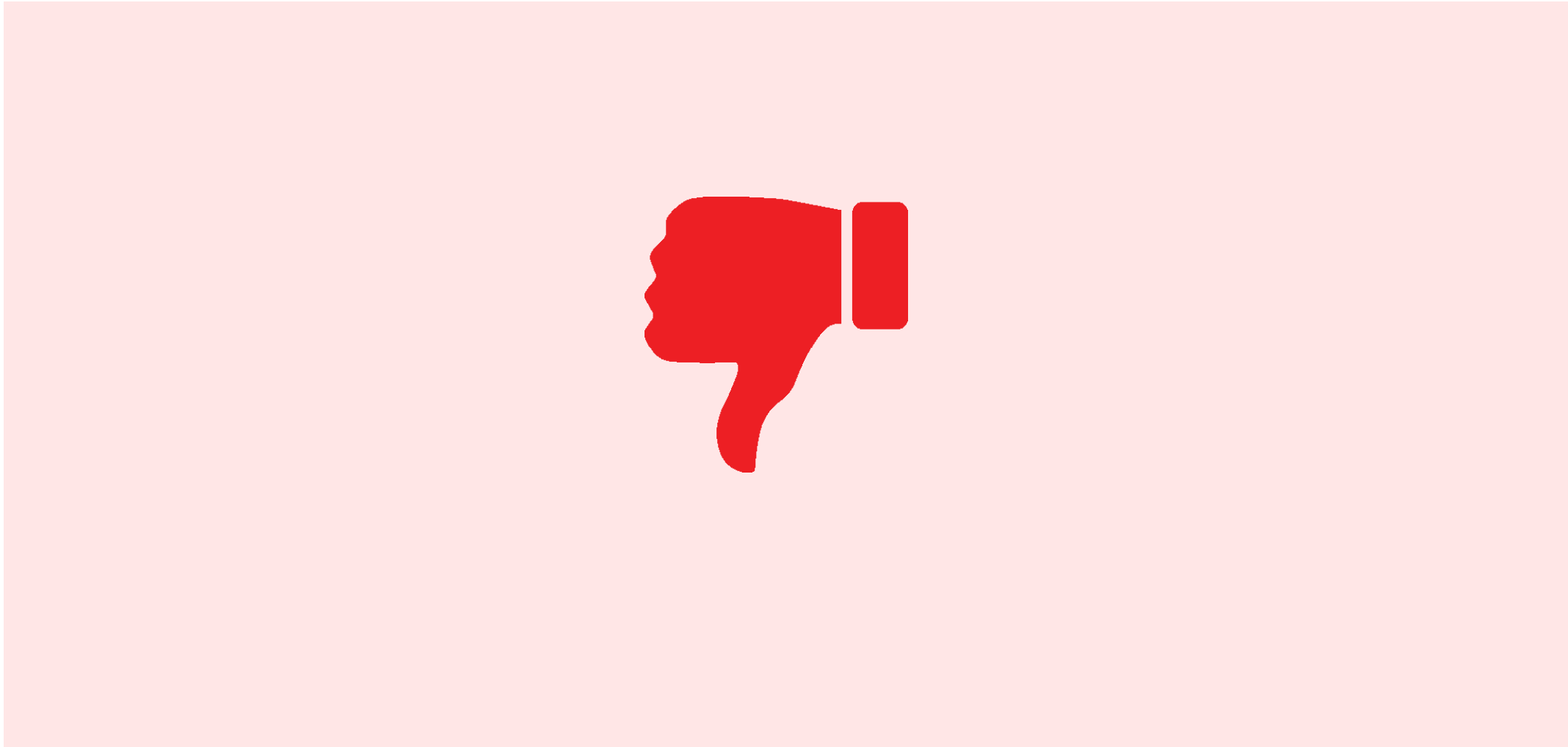
The two potential bridge crossings at Old Dunham Road ❶ and at Benhoff Park ❷ could be similar to bike and pedestrian bridges built throughout Northeast Ohio that aim to form safe, non-motorized links in trail networks.

Do you like Component 3: Develop Non-Motorized Connections?

THUMBS UP?



THUMBS DOWN?



COMMENTS

Maple Heights has no dedicated bikeways or trails, despite more than 10% of City households not owning a vehicle. There is also a lack of transportation options for seniors needing to get around and children needing to get to school or programs. Major non-motorized links would connect all of the City’s neighborhoods to its commercial nodes.

Potential Improvements

- A. Develop a System of Trails, Lanes, and Routes to Connect Neighborhoods to Commercial Centers and Parks
- B. Build a Connection Over the Railroad

MULTI-PURPOSE TRAILS



SHARROWS AND SIGNAGE



BIKE LANES



LINK TO NEARBY PARKS - JACKSON PARK

Review the map, images, and associated actions below. If you like the information, give it a “Thumbs Up” by placing a dot in the green box. If you do not like the information, give it a “Thumbs Down” by placing a dot in the red box. If you want to change an action, tell us how! Write a comment on a sticky note and place it in the grey box.



Maple Heights has numerous subdivisions that were never fully built. The largest and most central of these is the area bounded by Waterbury, Thomas, Broadway, and Dalewood Avenues. With limited new construction occurring in Maple Heights and environmental constraints to development in the area, this area could be used as a park and greenway that could spur nearby housing development, new commercial on Broadway, and boost property values.

Potential Improvements

- A. Acquire Vacant Parcels to Assemble Park Space
- B. Develop Jackson Boulevard Trail from High School to Bedford
- C. Develop Jackson Park Trails, Wetlands, and Passive Park Space
- D. Attract Housing Development along Thomas Street
- E. Encourage Commercial Improvements along Broadway

PASSIVE PARKS

Passive parks allow for the preservation of natural habitats while providing access to residents. At Jackson Park, improvements could include picnic areas and trails, while not disturbing much of the natural area.

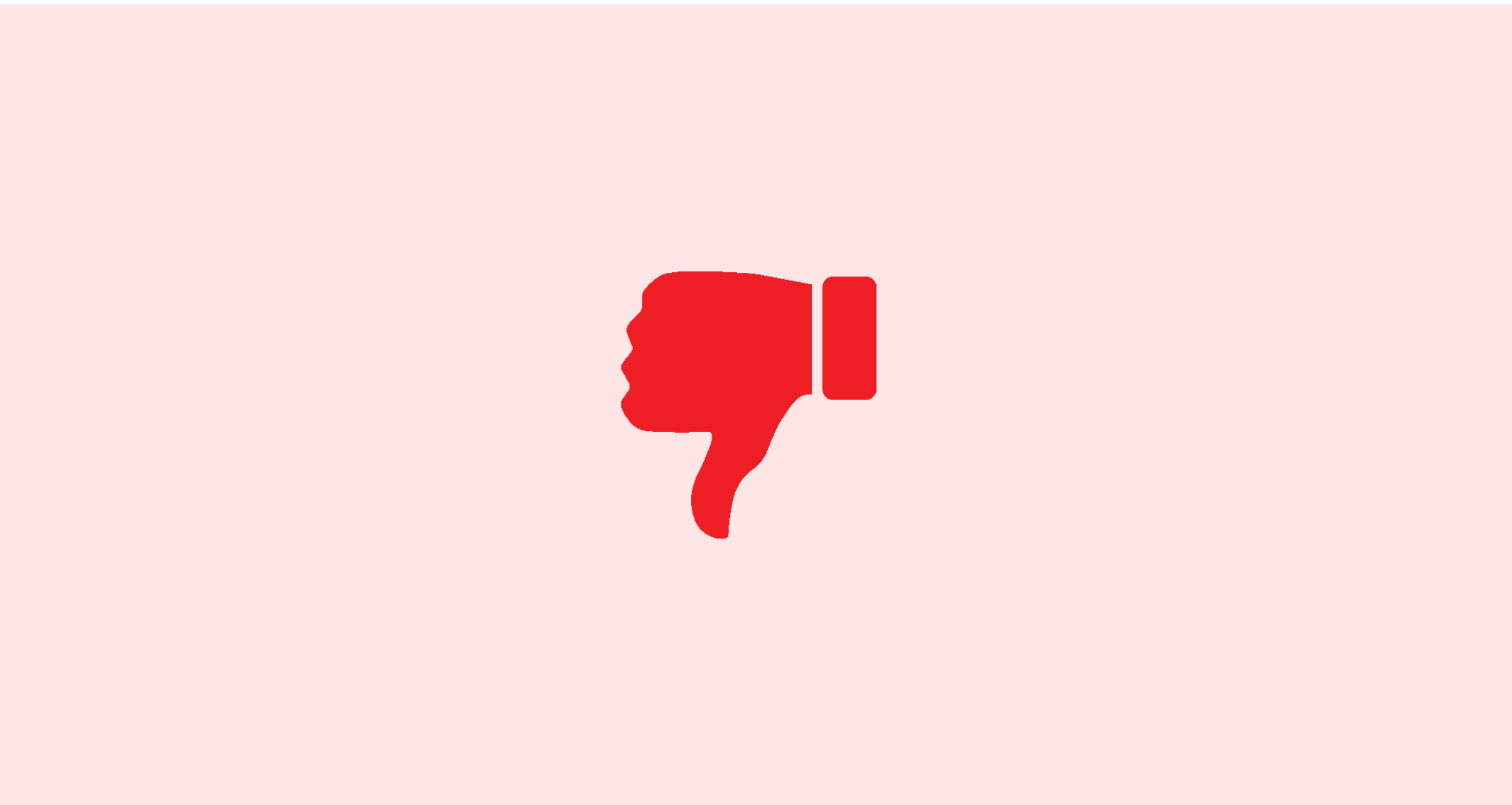


Do you like Component 4: Link to Nearby Parks - Jackson Park?

THUMBS UP?



THUMBS DOWN?

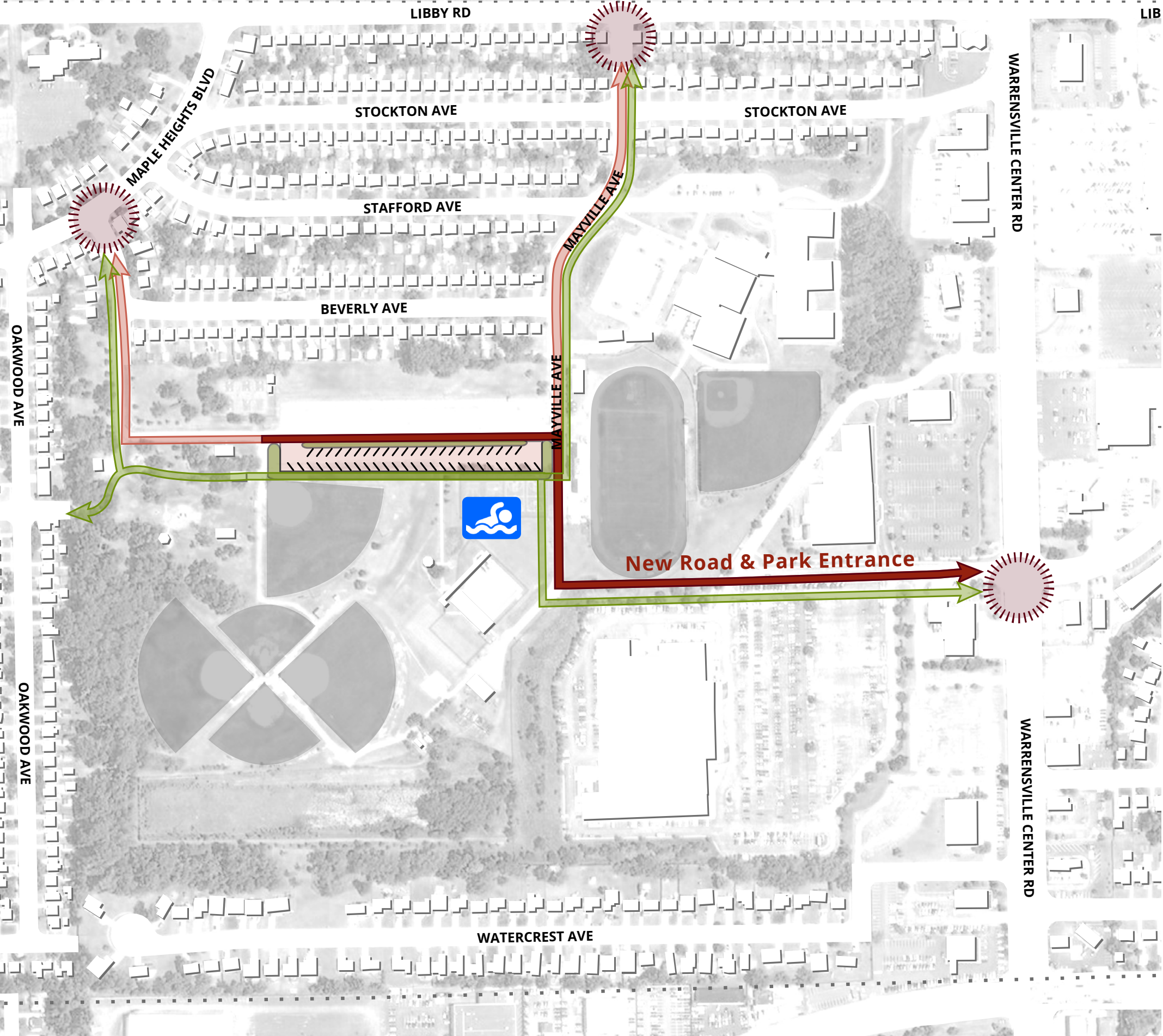


COMMENTS

Comments section for feedback.

LINK TO NEARBY PARKS - STAFFORD PARK

Review the map, images, and associated actions below. If you like the information, give it a “Thumbs Up” by placing a dot in the green box. If you do not like the information, give it a “Thumbs Down” by placing a dot in the red box. If you want to change an action, tell us how! Write a comment on a sticky note and place it in the grey box.



- Legend
- Trails
 - Existing Roads
 - Proposed New Road Entrance
 - Gateways

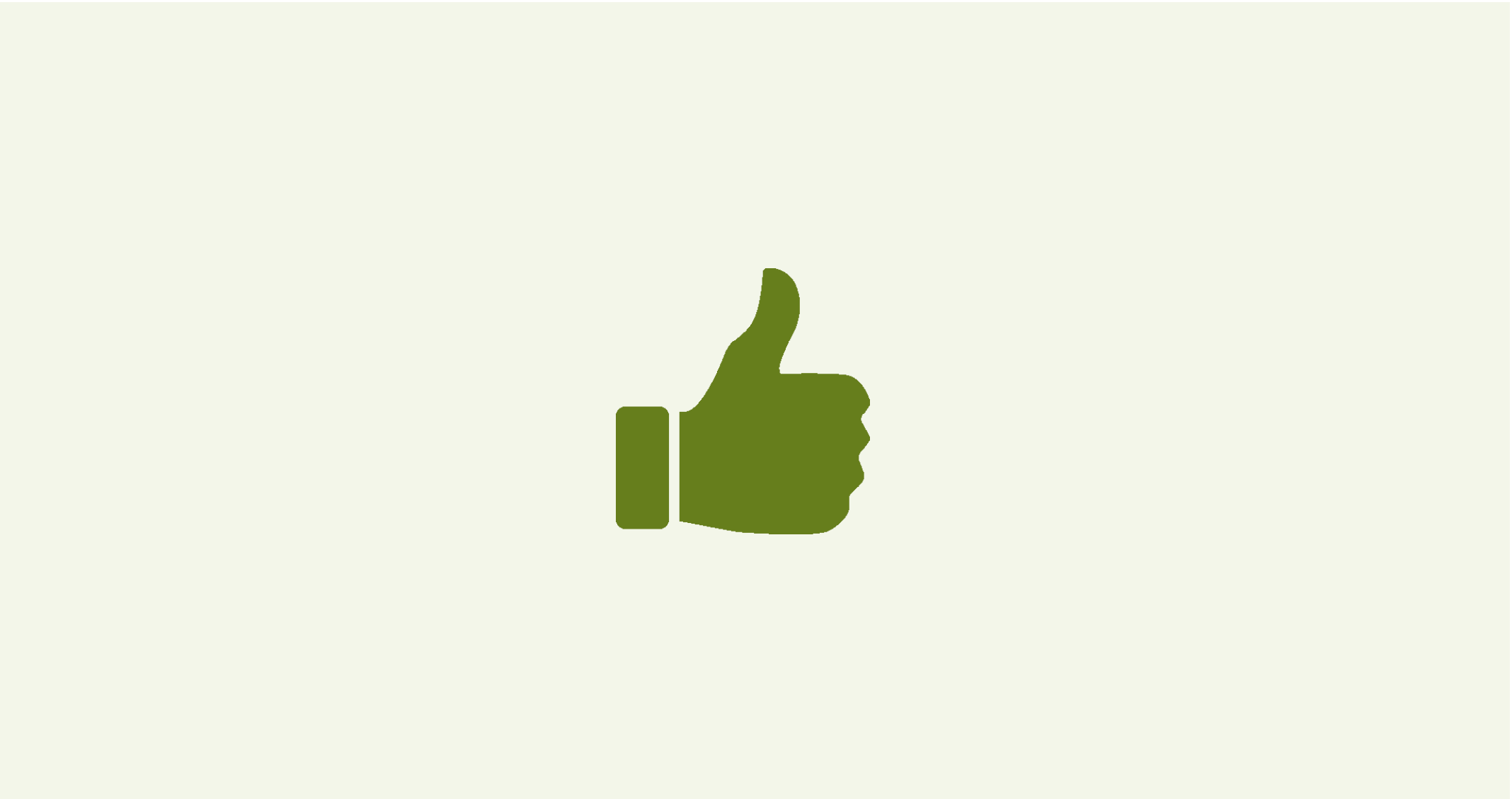
Stafford Park is the largest park in Maple Heights and includes many of the City’s active recreation areas, such as ballfields, playgrounds, and Safety Town. With aging amenities and an oversized parking lot, the plan calls for reinvesting in the park, shrinking and improving the parking lot, adding trails and new road connections, and reopening the City pool when funds are available.

Potential Improvements

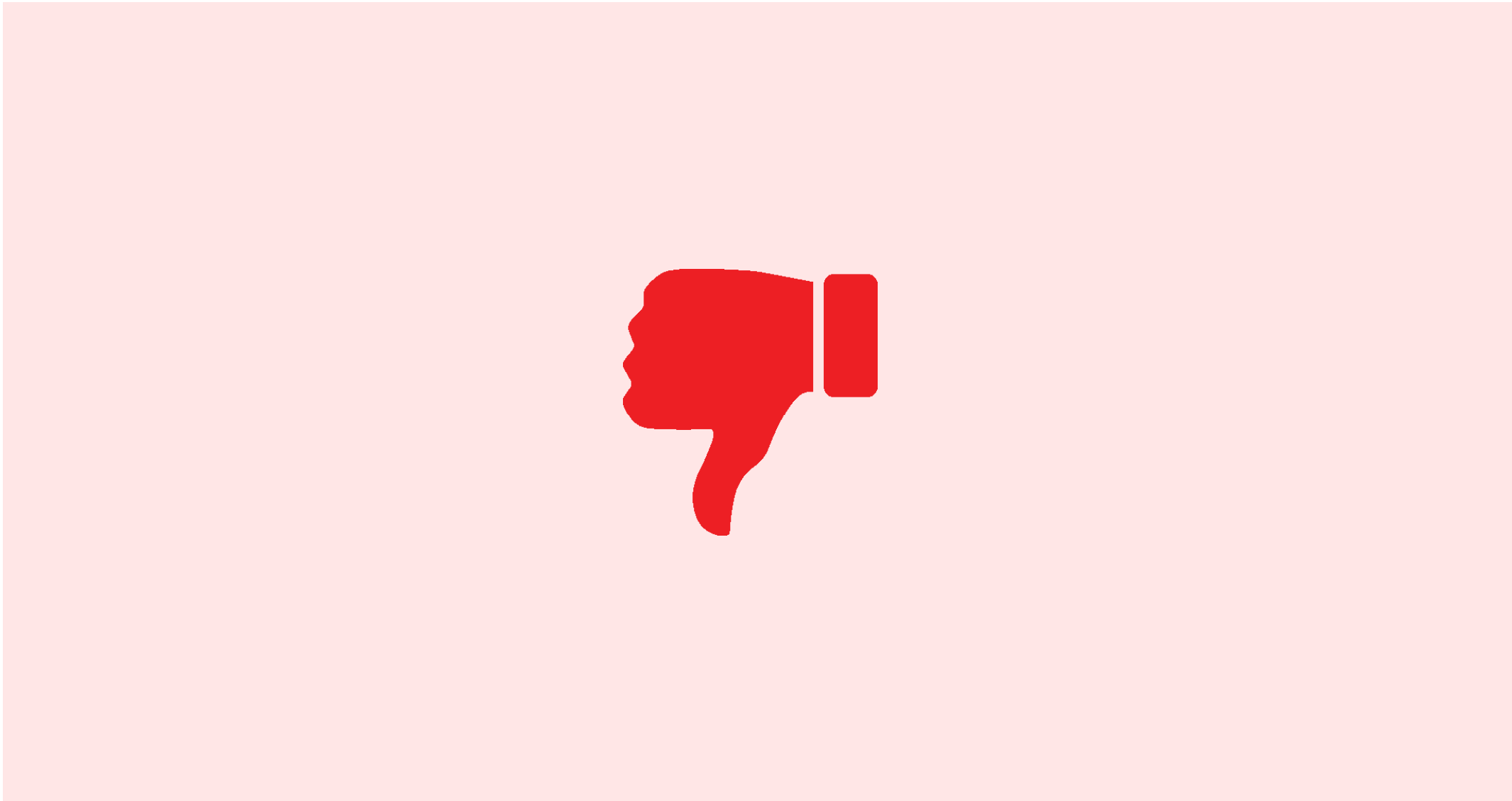
- A. Construct Trail Connections through the Park to Warrensville Center Road
- B. Construct a New Road Entrance Off Warrensville Center Road
- C. Repair Existing Park Amenities
- D. Add Gateways into the Park
- E. Shrink and Improve the Parking Lot
- F. Reopen the Pool as Funds become Available

Do you like Component 4: Link to Nearby Parks - Stafford Park?

THUMBS UP?



THUMBS DOWN?



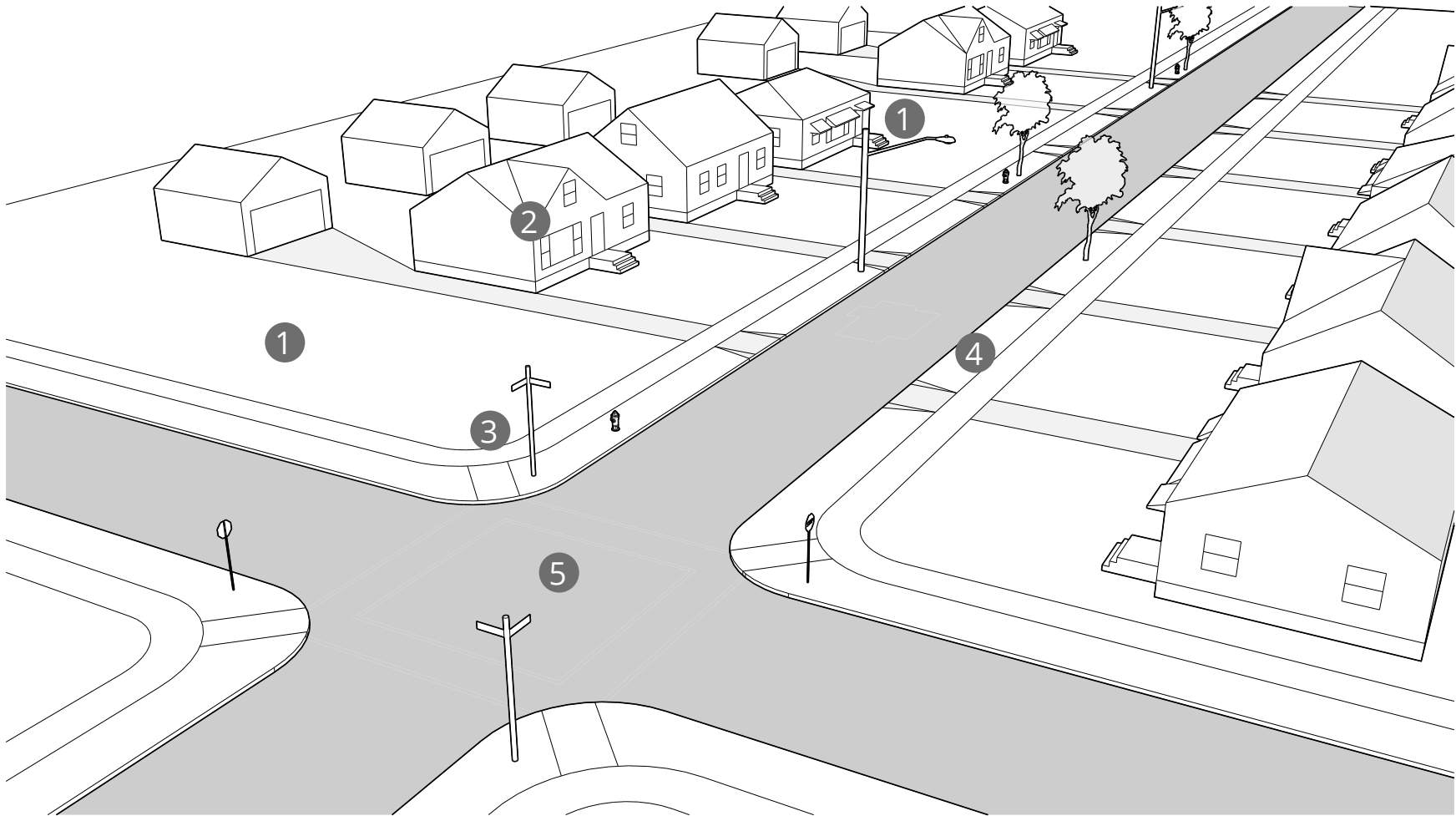
COMMENTS

STRENGTHEN SURROUNDING RESIDENTIAL AREAS

Review the map, images, and associated actions below. If you like the information, give it a “Thumbs Up” by placing a dot in the green box. If you do not like the information, give it a “Thumbs Down” by placing a dot in the red box. If you want to change an action, tell us how! Write a comment on a sticky note and place it in the grey box.

Neighborhood—Before Improvement Program

- Legend
- 1 Vacant Parcels
 - 2 Older Home
 - 3 Street Sign
 - 4 Missing Street Tree
 - 5 Neighborhood Intersection



Neighborhoods in Maple Heights face a variety of conditions including vacancy, as well as positive indicators such as strong housing maintenance of certain properties. To facilitate meaningful neighborhood change, there should be neighborhood improvement programs that strengthen residential areas. A neighborhood improvement program should use multiple investments in a small area and short timeframe to change not only the look and feel of a neighborhood, but also the perception of residents and visitors.

Potential Improvements

- A. Develop a Neighborhood Improvement Program
- B. Engage Potential Partners and Resident Groups
- C. Select Target Neighborhood Streets for a Neighborhood Improvement Program

Neighborhood—After Improvement Program

- Legend
- 1 Infill Housing
 - 2 Replaced Street Light
 - 3 Home Renovations
 - 4 Pocket Park
 - 5 Hydrant Repainting
 - 6 Street Trees
 - 7 Sharrows and Signage
 - 8 Street Repairs
 - 9 Decorative Street Signs
 - 10 Improved Crosswalks



Do you like Component 5: Strengthen Surrounding Residential Areas?

THUMBS UP?



THUMBS DOWN?



COMMENTS

ENHANCE INDUSTRIAL PARKS

Review the map, images, and associated actions below. If you like the information, give it a “Thumbs Up” by placing a dot in the green box. If you do not like the information, give it a “Thumbs Down” by placing a dot in the red box. If you want to change an action, tell us how! Write a comment on a sticky note and place it in the grey box.



The City’s industrial employment is concentrated in two areas bordering Dunham and Rockside and Rockside Road, just west of the railroad tracks. The City’s manufacturing and wholesale trade jobs account for a fifth of all employment in Maple Heights, yet these industrial areas lack a coherent identity. To attract new development, these areas should have an improved physical appearance, development strategy, and brand.

Potential Improvements

- A. Name Industrial Parks
- B. Assemble Property Owners to Coordinate Investments
- C. Improve Streetscapes and Gateways
- D. Develop Employee Amenities such as Parks and Trails
- E. Promote Vacant Parcels for New Development

Do you like Component 6: Enhance Industrial Parks?

THUMBS UP?



THUMBS DOWN?



COMMENTS