



CUYAHOGA
greenways

COMMUNITY MEETING #2

January 17, 4:30 – 6:30pm @ Hofbrauhaus

1550 Chester Ave, Cleveland

January 18, 6:30 – 8:00pm @ Beachwood Community Center

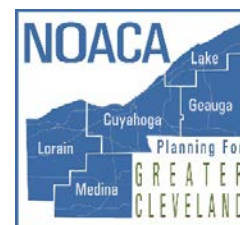
25325 Fairmount Blvd., Beachwood

January 18, 6:30 – 8:00pm @ Gemini Center

21225 Lorain Road, Fairview Park



County Planning



SMITHGROUPJJR



Guide



1. Project Overview

- Goals
- Key Concepts

2. Feedback Report

- Project & technical team
- Public workshops & survey

3. Greenway Framework

- Candidate Routes
- Evaluation Criteria

4. Questions & Feedback

5. Next Steps



Approachable/
Welcoming



Transportation

Active
Community



Spunky &
Fun





PROJECT OVERVIEW

Cuyahoga Greenways

PROJECT PARTNERS



Kelly Coffman

Senior Strategic Parks Planner
kbc@clevelandmetropark.com



Glenn Coyne, FAICP

Executive Director
County Planning
gcoyne@cuyahogacounty.us



Andrew Stahlke

TLCI Project Manager
astahlke@mpo.noaca.org

CuyahogaGreenways@clevelandmetroparks.com

CONSULTANTS:

SMITHGROUPJJR



Guide

PROJECT PURPOSE



- Expand and update the trail and greenway planning initiated in the Eastside Greenway to develop a strategic plan for implementing an interconnected series of **greenways** and **urban trails** across Cuyahoga County.
- Build on the existing trail network and fill in the major **missing links**.
- Establish a regionally significant network of routes to **serve all users, ages, and abilities**.



GREENWAYS & URBAN TRAILS



- **Greenways** are dedicated, linear spaces that provide opportunities for recreation, non-motorized transportation, and natural features.
 - Typically includes shared-use trails, landscaping, natural amenities, and site furnishings
 - Typically off-street
 - Designed for all ages and all abilities
 - Emphasis on green infrastructure and habitat/stream corridor protection
- **Urban Trails** are dedicated facilities that provide non-motorized connections through and between communities for recreation and access to jobs and community assets.
 - Typically located on-road or within public rights-of-way or other constrained spaces
 - Design for all ages and all abilities preferred
 - May include additional landscaping, natural features, and site furnishings



Dequindre Cut, Detroit



Indianapolis Cultural Trail

BENEFITS OF GREENWAYS & URBAN TRAILS



Increases **mobility** and **transportation options**

- Connect jobs, commercial areas, institutions, and residents

Improves **community health** through **active living**

- Create attractive, safe and accessible places to walk, bike, hike, run, and more

Generates **economic activity**

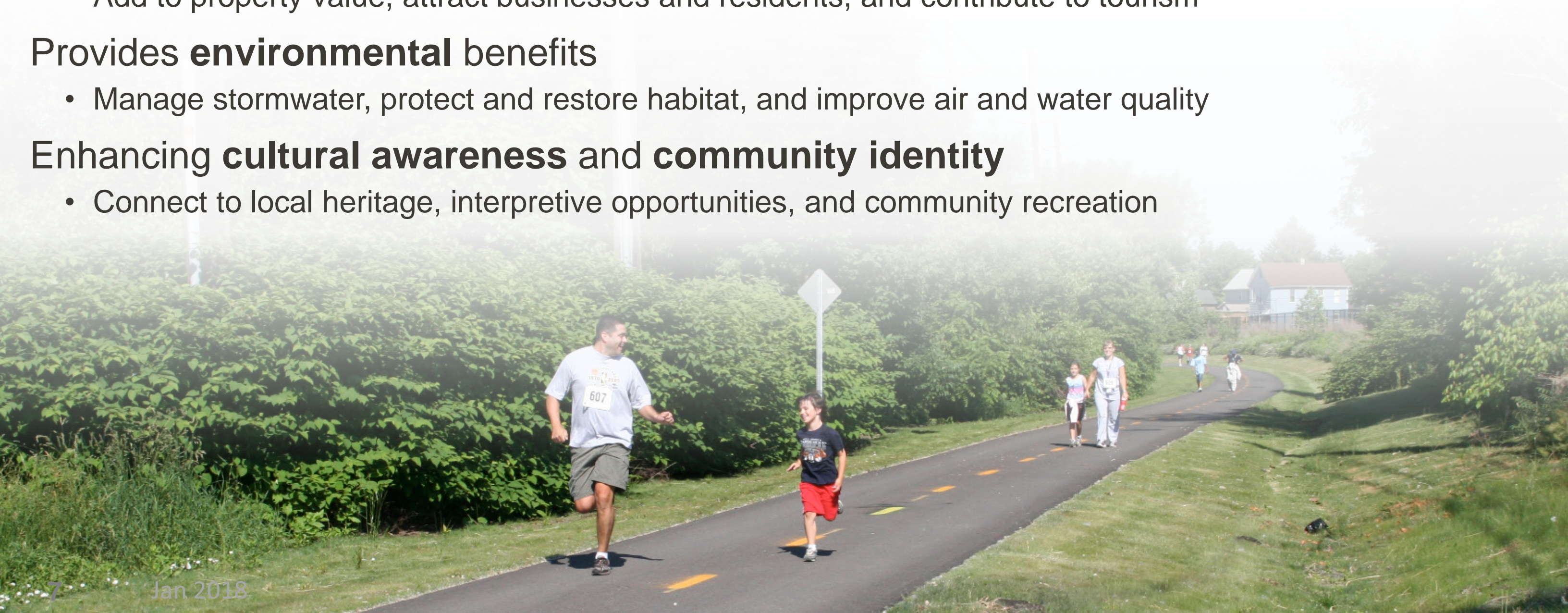
- Add to property value, attract businesses and residents, and contribute to tourism

Provides **environmental** benefits

- Manage stormwater, protect and restore habitat, and improve air and water quality

Enhancing **cultural awareness** and **community identity**

- Connect to local heritage, interpretive opportunities, and community recreation





Cuyahoga Greenways is an **DISTINCT ADVANTAGE interconnected system** of greenways and urban trails that tie in with public transportation and parks to offer **PRODUCTS/SERVICES recreational opportunities** and **options for getting around** the county, elevating the **END BENEFIT health of the community** and the **AUDIENCE individuals who call it home.**



Build a connected system

- Link trails and transit
- Logical and user-friendly
- Local and regional connections
- Leverage parks and open space

Link green infrastructure & community health

- Promotes active life styles
- Celebrates natural amenities
- Sustainable mobility

Build an accessible system

- Easy to get to
- Usable for all ages and all abilities
- Serves a diverse community

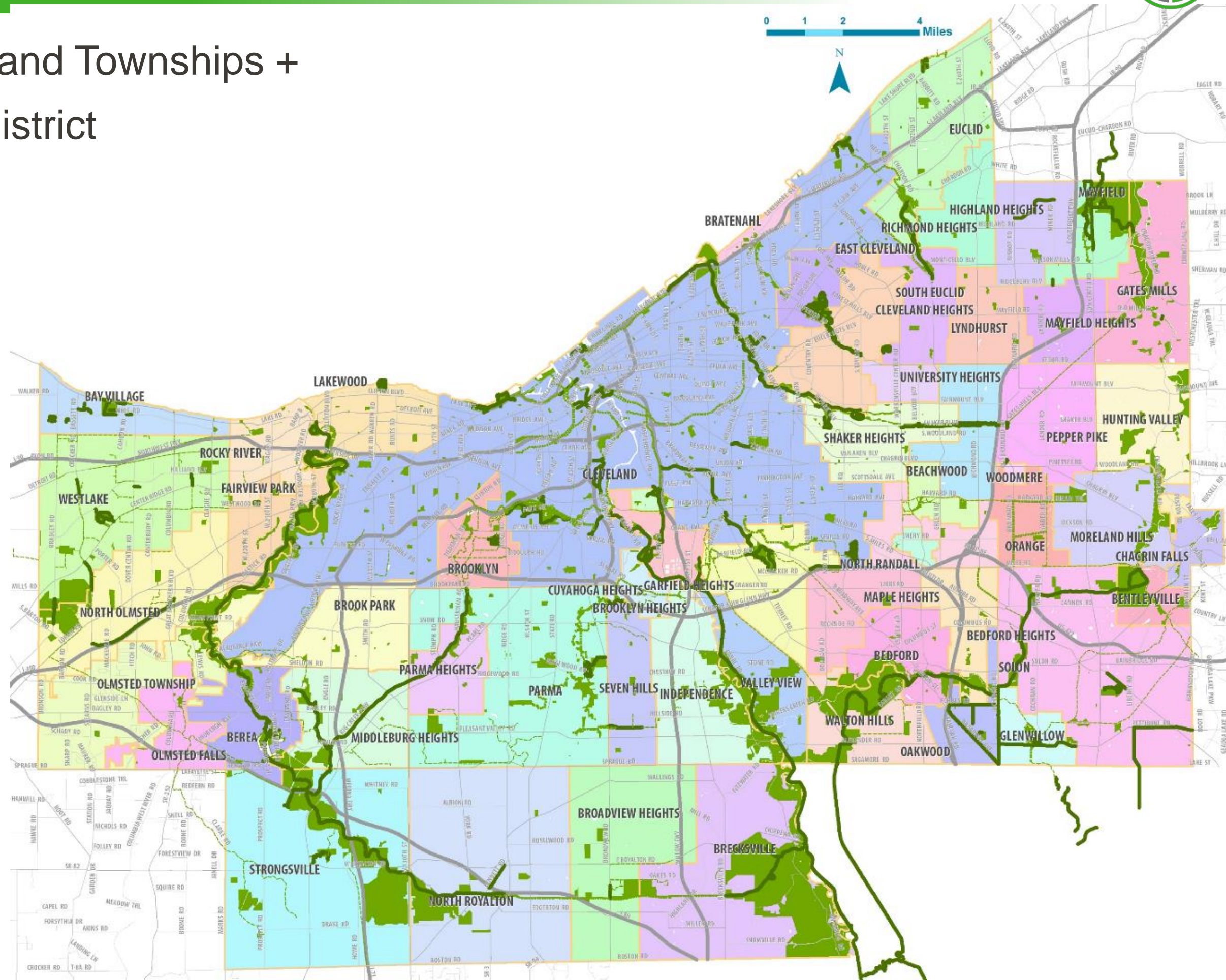
Drive and attract economic vitality

- Strengthens community identity
- Attracts and retains jobs and residents
- Supports businesses and tourism

PROJECT AREA



- 59 Cities, Villages, and Townships + County-wide park district



MEETINGS & PUBLIC ENGAGEMENT



1 – Project Initiation

- Steering Committee #1

June 2017

2 – Current Conditions

- Steering Committee #2
- Community Meetings #1
- Public Web Survey

July 2017 (*3 meetings*)
August 2017 (*3 meetings*)
August – December 2017

3 – Shaping the Vision

- Steering Committee #3
- Community Meetings #2

November 2017 (*3 meetings*)
January 2018 (*3 meetings*)

4 – Concept Development

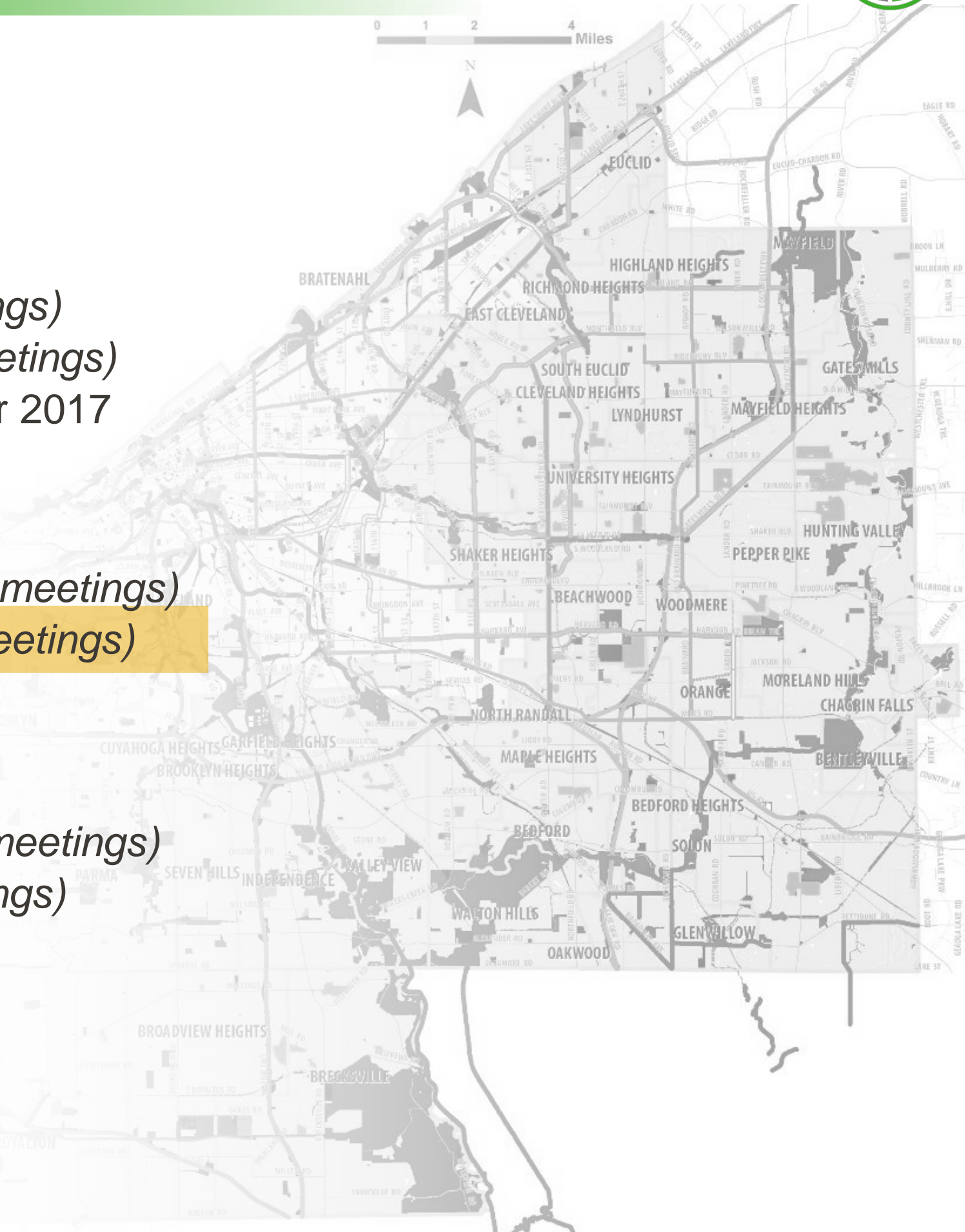
- Steering Committee #4
- Community Meeting #3

April/May 2018 (*3 meetings*)
May 2018 (*3 meetings*)

5/6 – Draft Master Plan & Final Report

- Final meetings TBD

Summer 2018





FEEDBACK REPORT

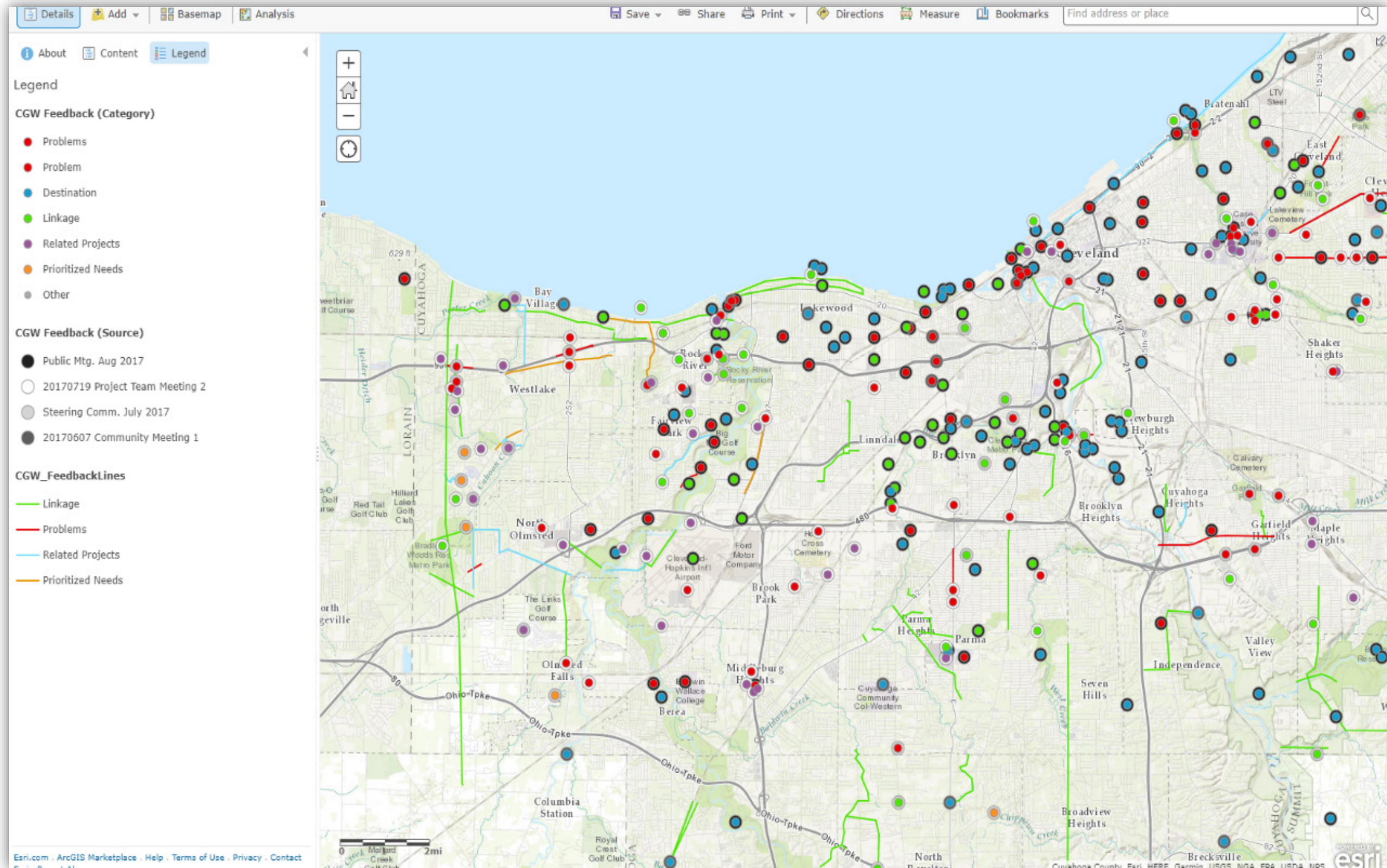
Cuyahoga Greenways

DOT-EXERCISE FEEDBACK VIEWER



• <https://arcg.is/0vLDD9>

Data from Project Team, Steering Committee, & Public Workshops





- Public survey opened in August, ran through December.
- Survey analysis based on 841 responses (over 1,150 responses total).
- 9 primary questions + 2 demographic questions.
- See response summary here:
<https://tinyurl.com/yb442nah>

QUESTIONS RESPONSES 882

CUYAHOGA GREENWAYS: Public Survey

Hello! Cuyahoga County Planning and Cleveland Metroparks are planning a system of greenways and urban trails across the county. We want to hear from you about how you get around your community and ways in which you feel that new greenways and urban trails would be beneficial.

Image title



CUYAHOGA
greenways

Q1: How often do you walk or run for recreation?

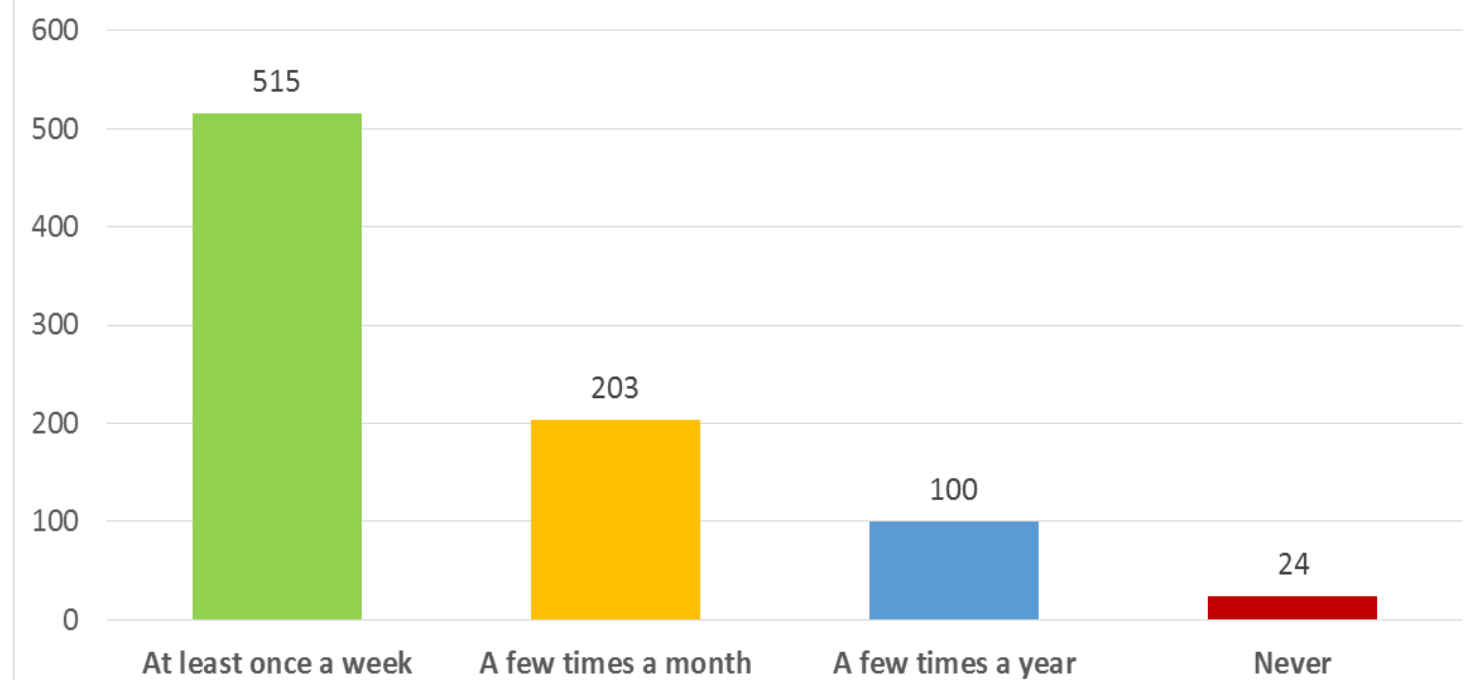
☐ At least once a week

☐ A few times a month

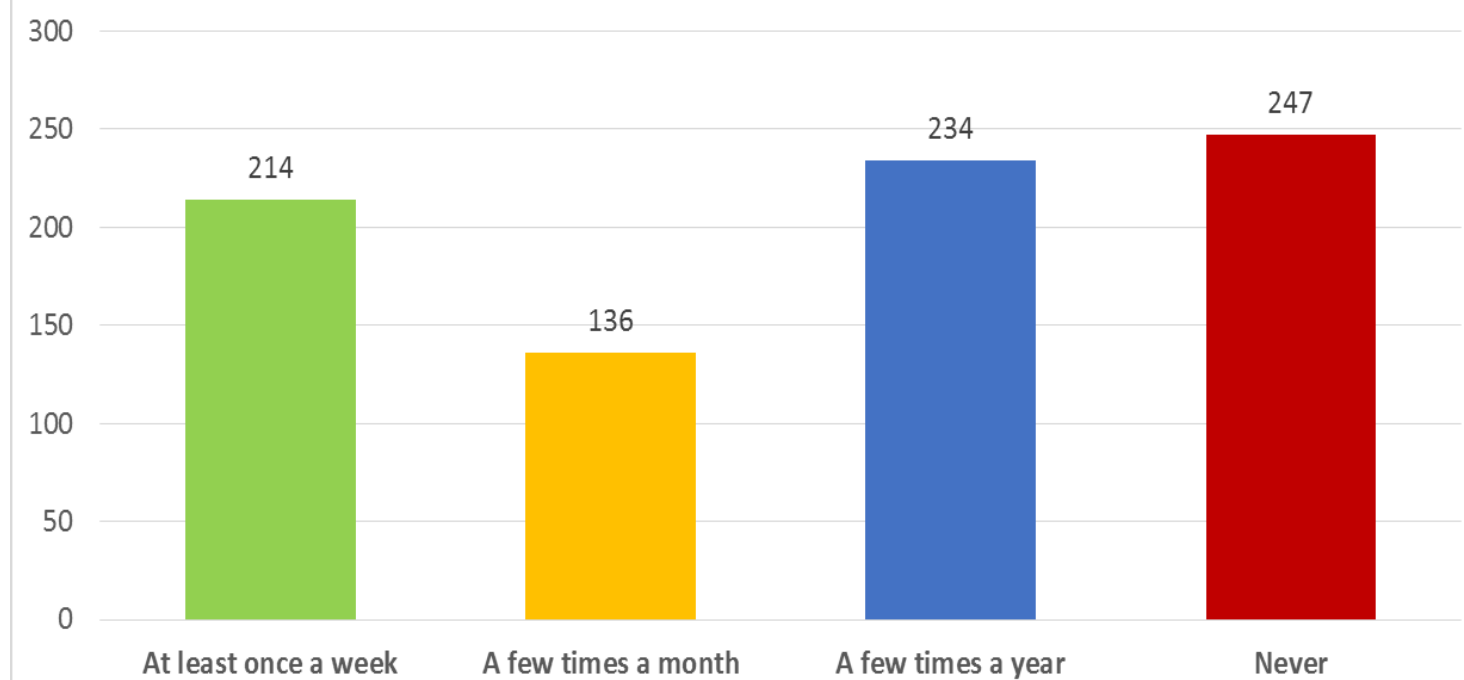
Q1/2/3/4: WALK/RUN/BIKE FOR RECREATION



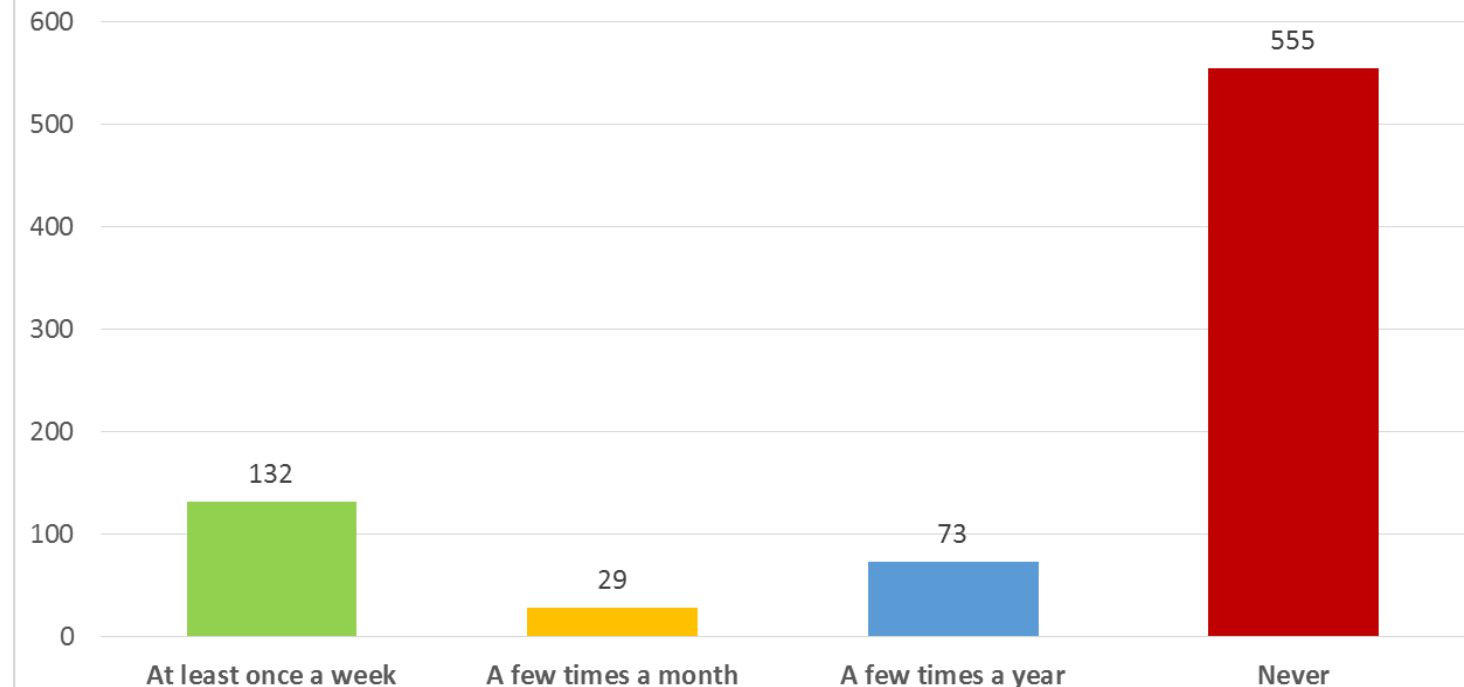
How often do you walk or run for recreation?



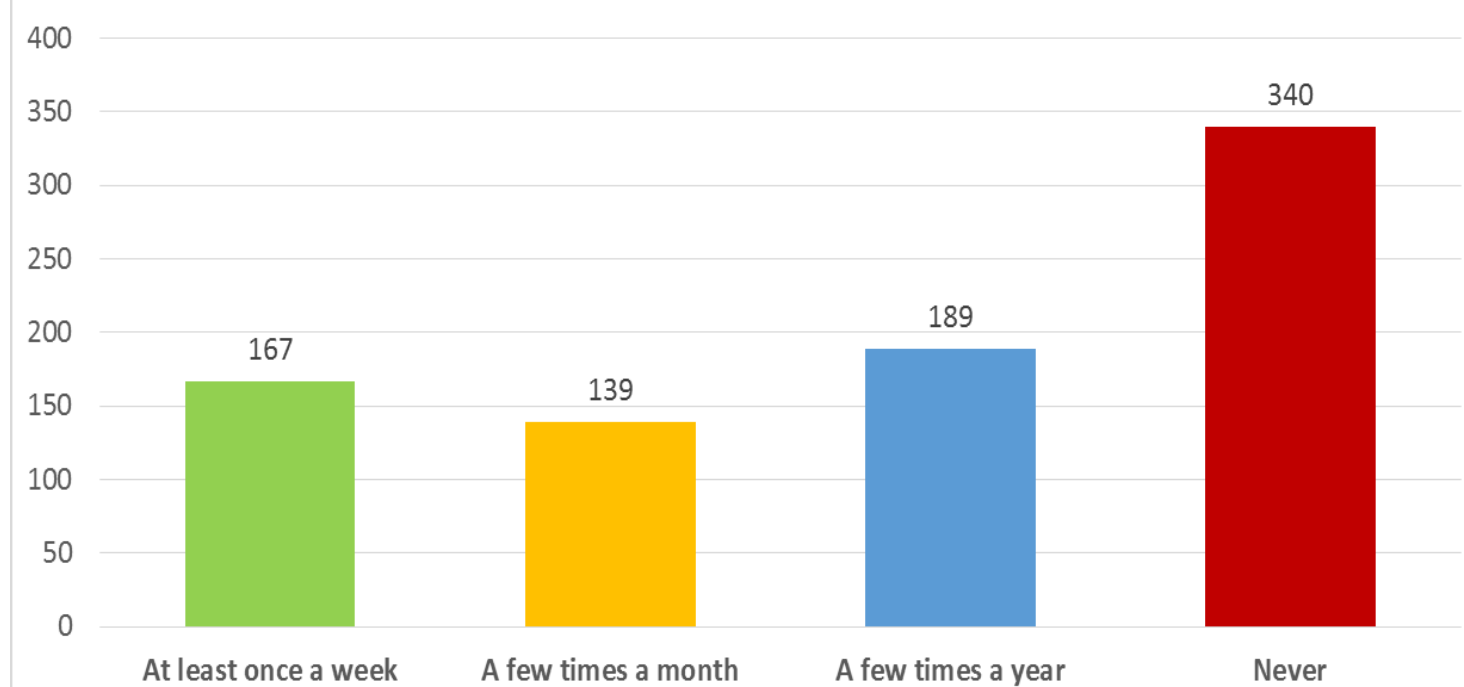
How often do you bicycle for recreation?



How often do you bicycle or walk to work/school?



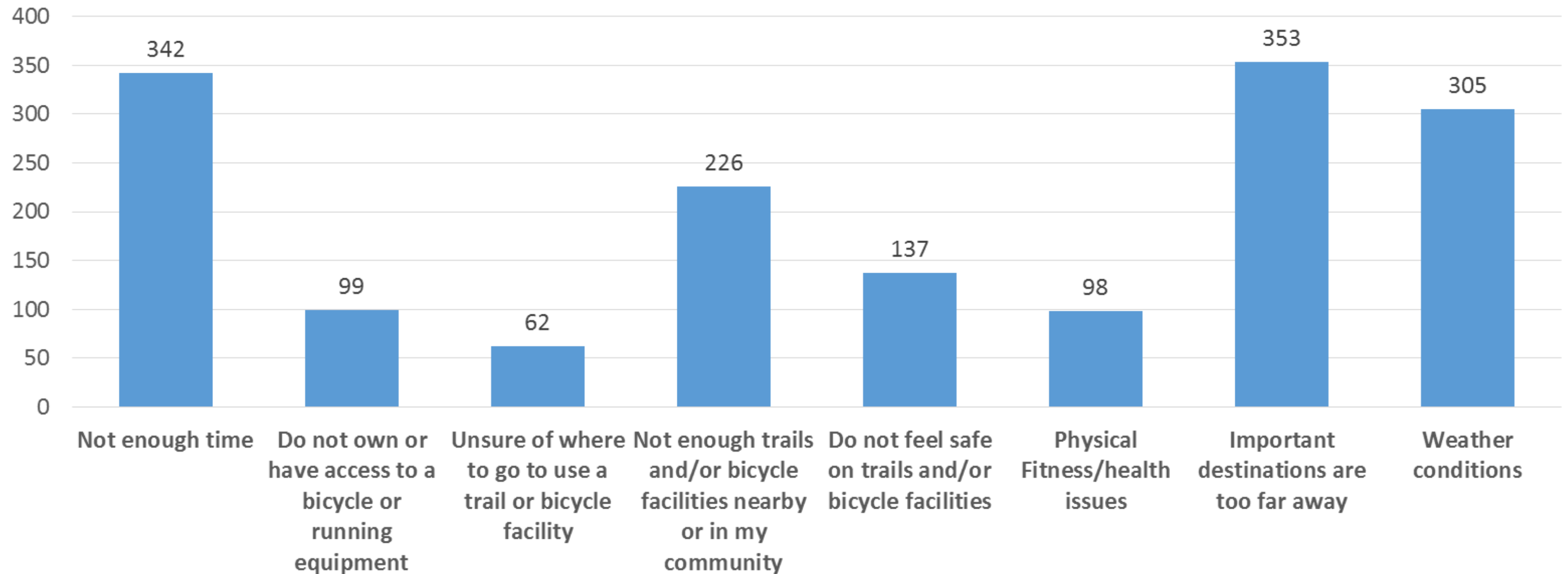
How often do you bicycle or walk to run errands?



Q5: OBSTACLES OR BARRIERS



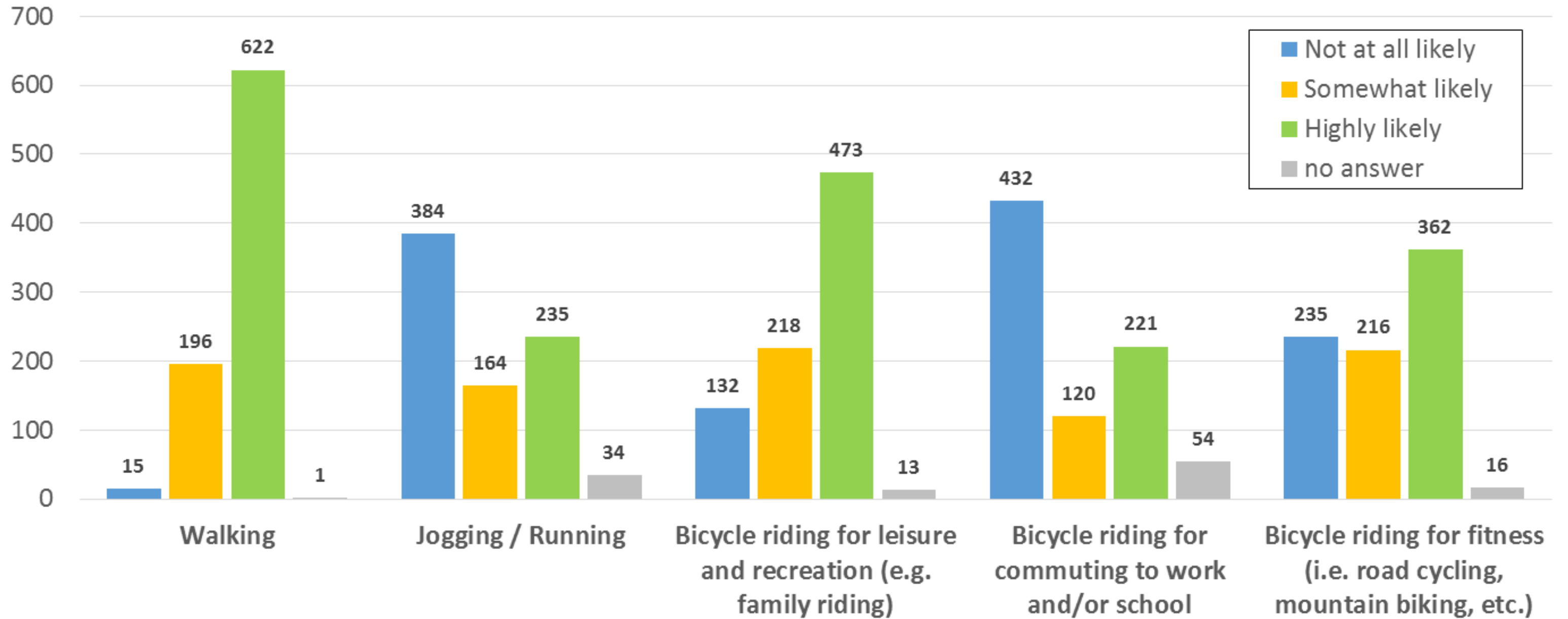
Please indicate which obstacles or barriers prevent you from walking, running, or biking more often (check all that apply)



Q6: HOW WOULD PEOPLE USE GREENWAYS



If there was a network of greenways and urban trails within your community, how likely are you to use it for the following activities?





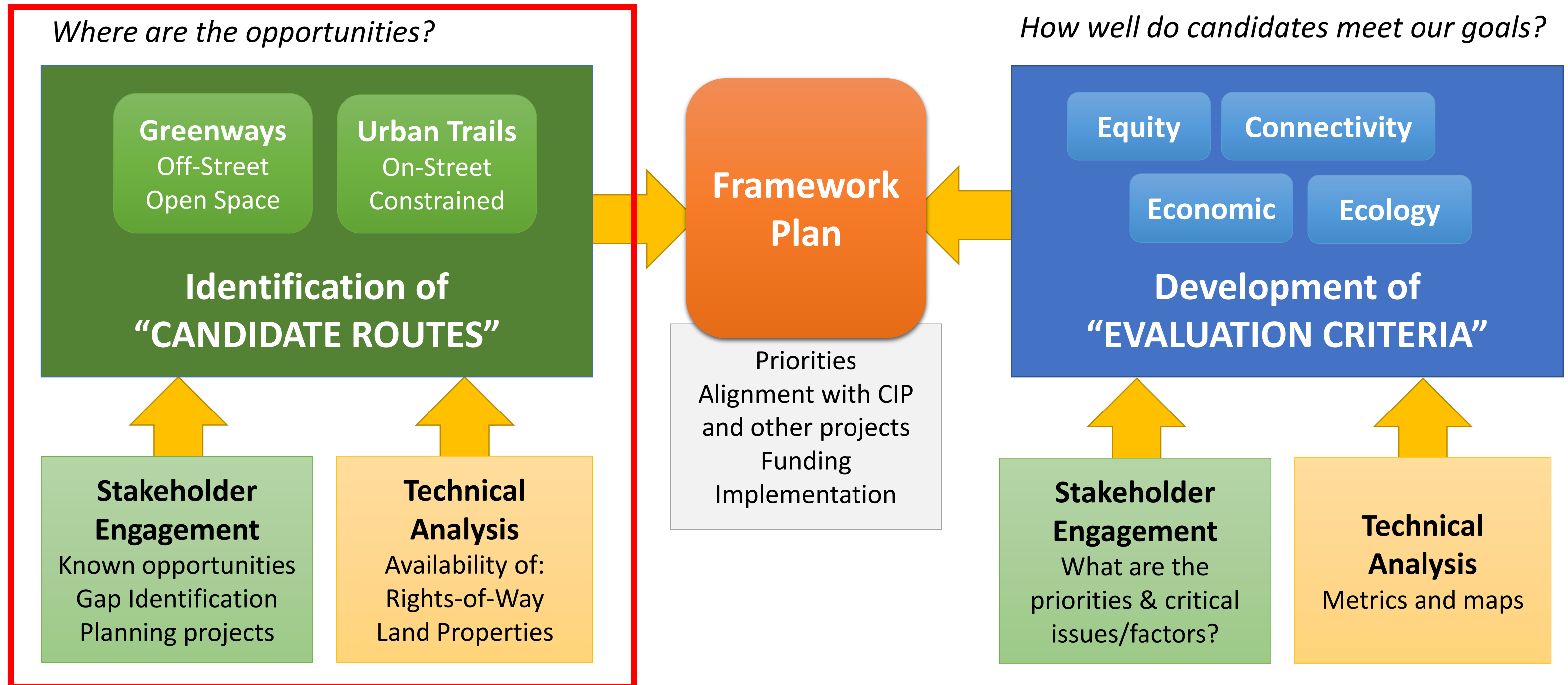
GREENWAY FRAMEWORK

Cuyahoga Greenways

-
- to the Lake
- to the Parks
- Connected
- to each other
- Welcoming



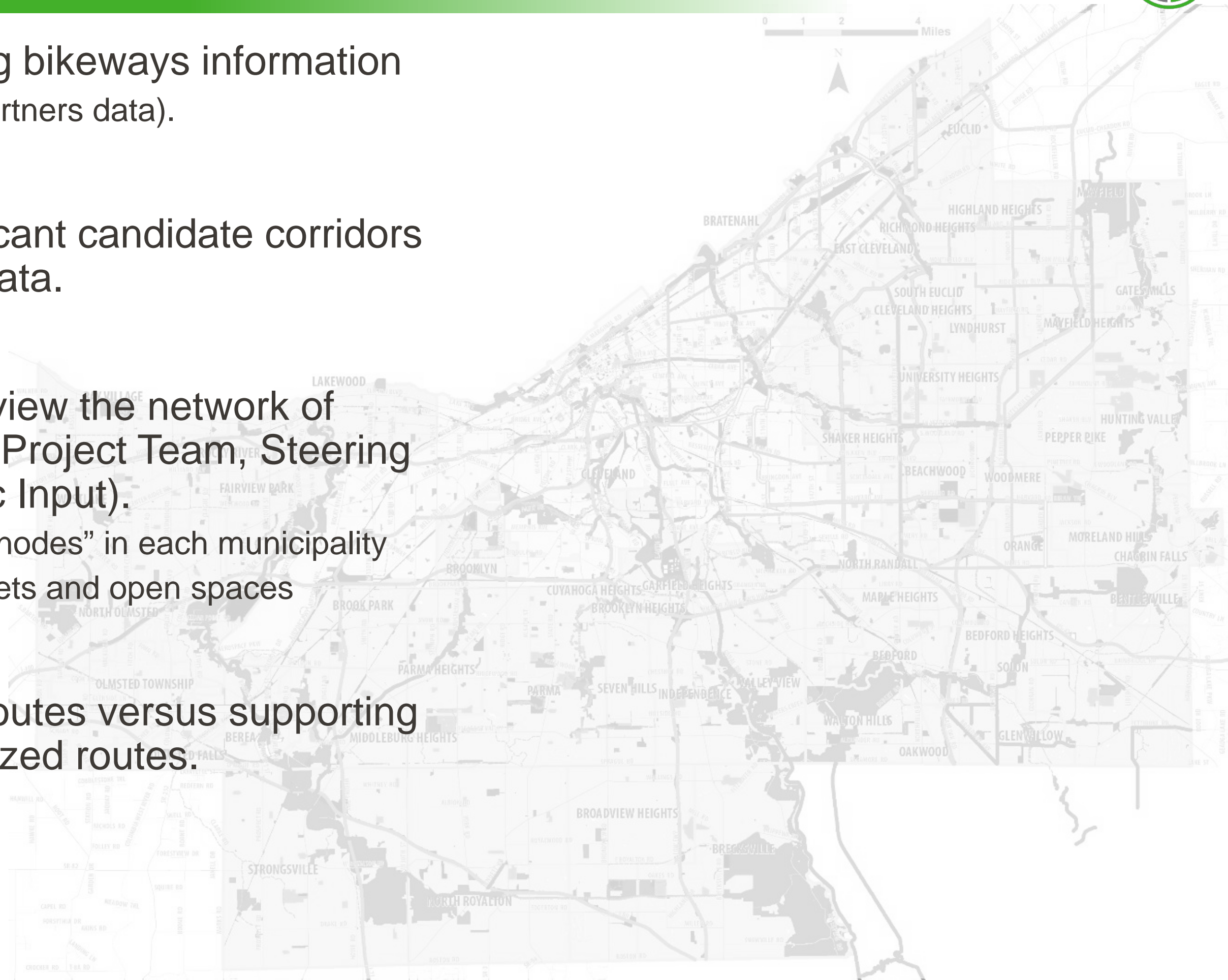
Planning process uses data and analysis resources to strengthen and empower stakeholder decision-making.



CANDIDATE ROUTES - PROCESS



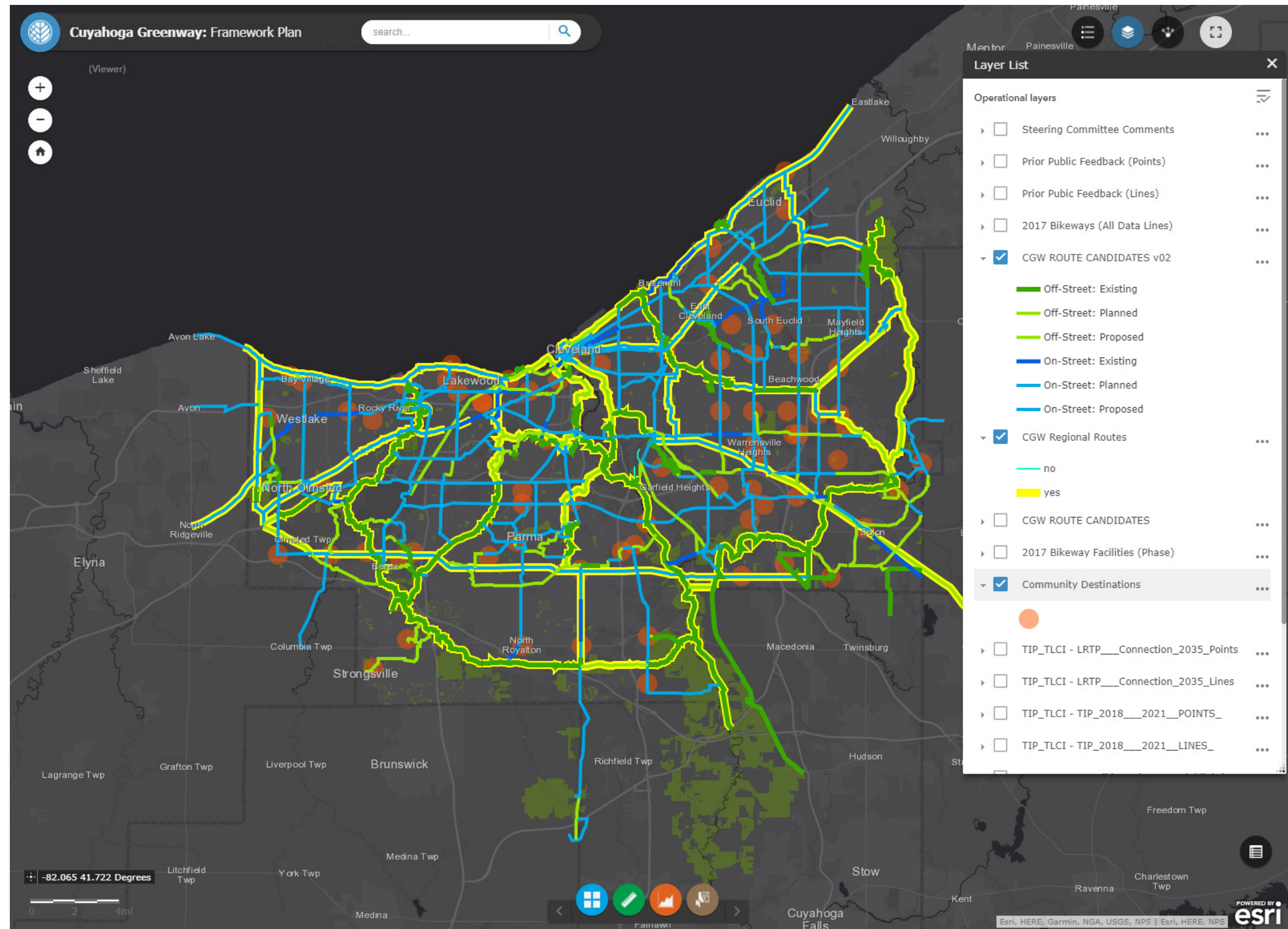
1. Begin with existing bikeways information
 - (e.g. Greenways Partners data).
2. Identify the significant candidate corridors within Bikeways data.
3. Add/refine and review the network of candidate routes (Project Team, Steering Committee, Public Input).
 - Link to “community nodes” in each municipality
 - Link to regional assets and open spaces
4. Identify regional routes versus supporting and/or more localized routes.



CANDIDATE ROUTES – WEB MAP



- Web map used with Project Team and Steering Committee to develop a set of candidate Greenway & Urban Trail routes.
- Can view the interactive web map here:
<https://arcg.is/1PH9T8>



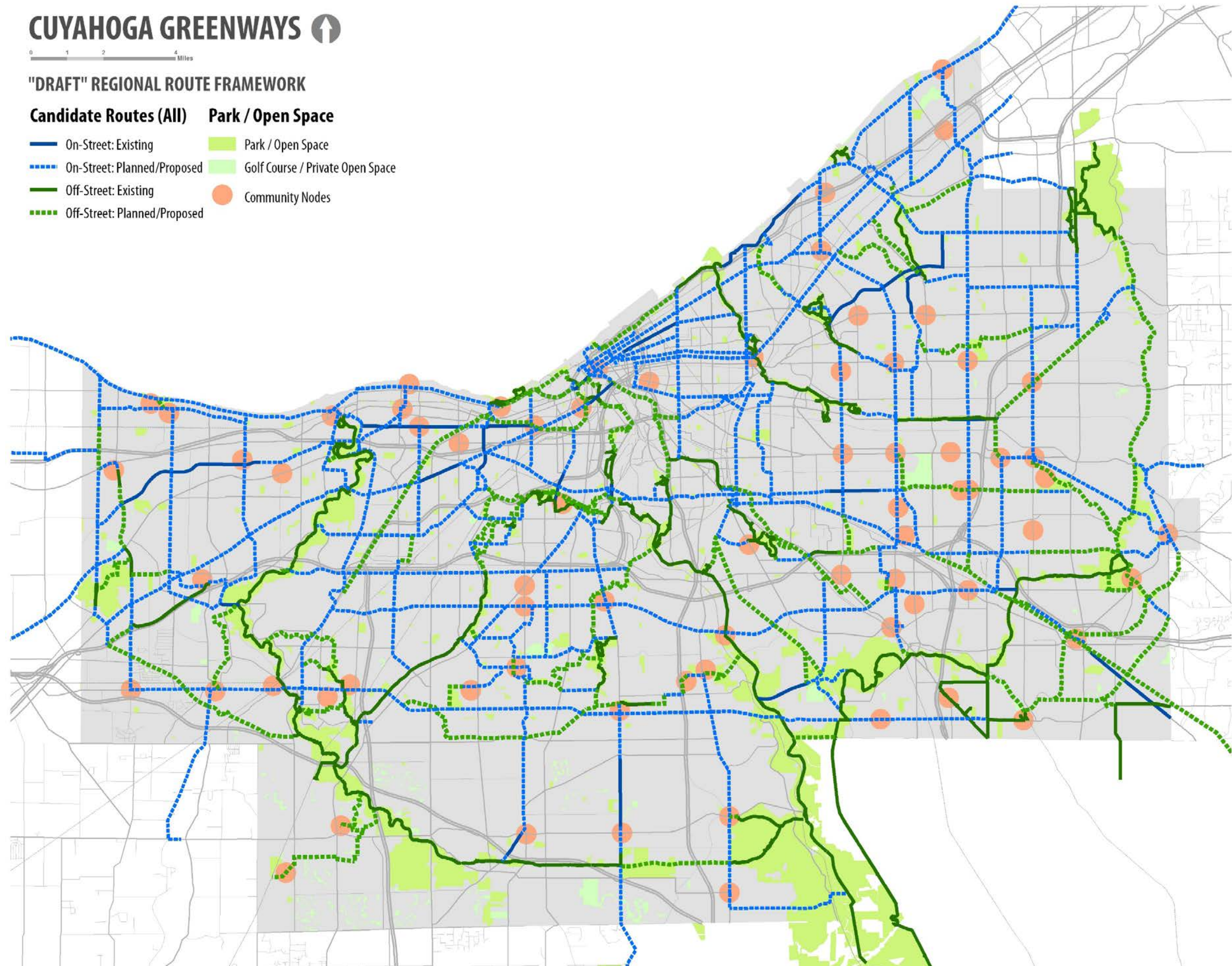
CANDIDATE ROUTES - CURRENT



Includes **on-** and **off-street** routes.

Includes **existing**, **planned**, and **proposed** routes.

In some cases, may be desire to upgrade existing facility to a higher level facility.



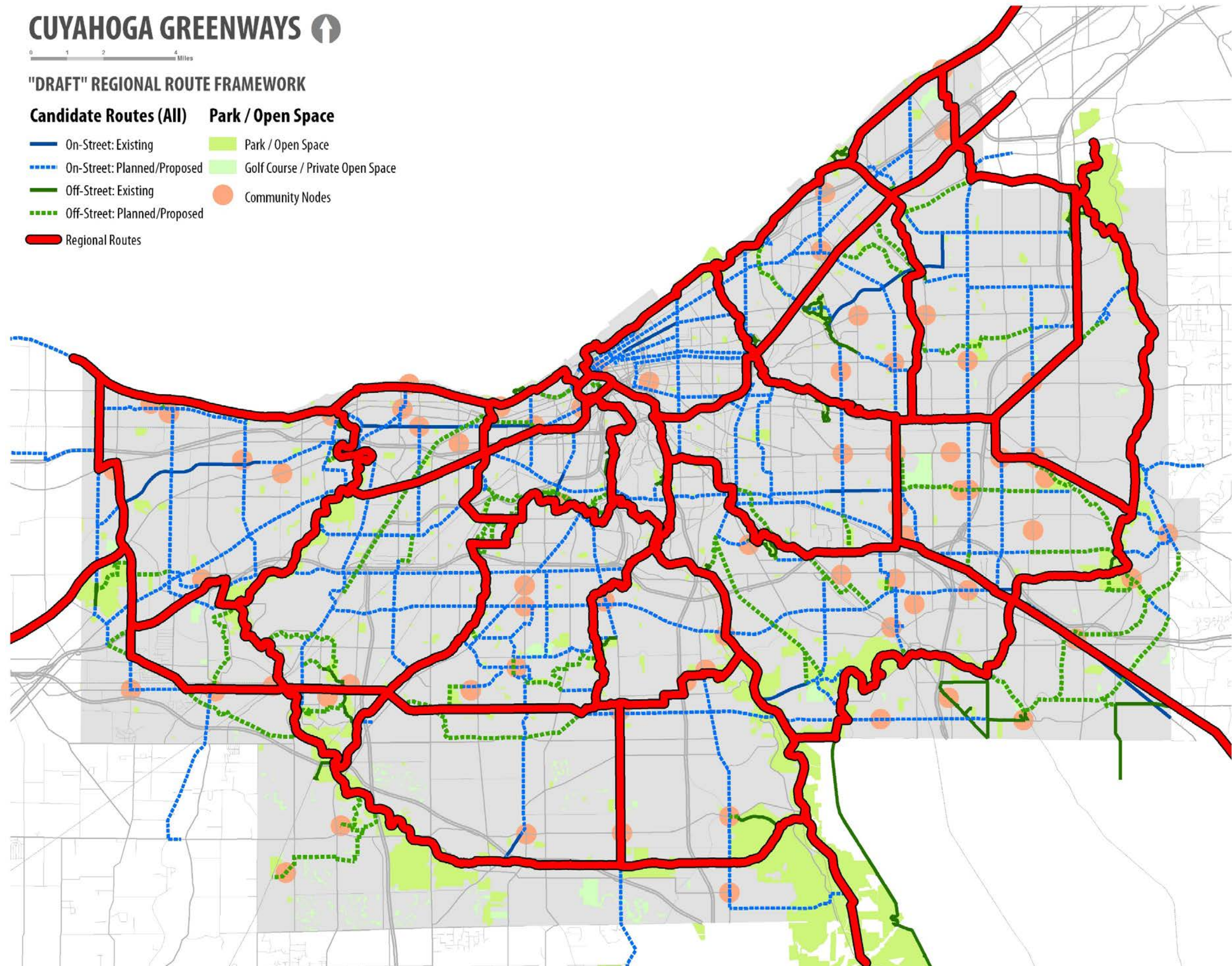
CANDIDATE ROUTES – REGIONAL NETWORK DRAFT



Project Team took the first pass at developing a regional network.

Emphasizes trail (all ages & all abilities) connections with a regional, cross-county opportunity.

Other candidate routes are part of a “supporting” system of on-road and off-road links.



CANDIDATE ROUTES – REGIONAL NETWORK DRAFT



Many of the regional candidate routes still need to be implemented.

Regional Trails – Existing

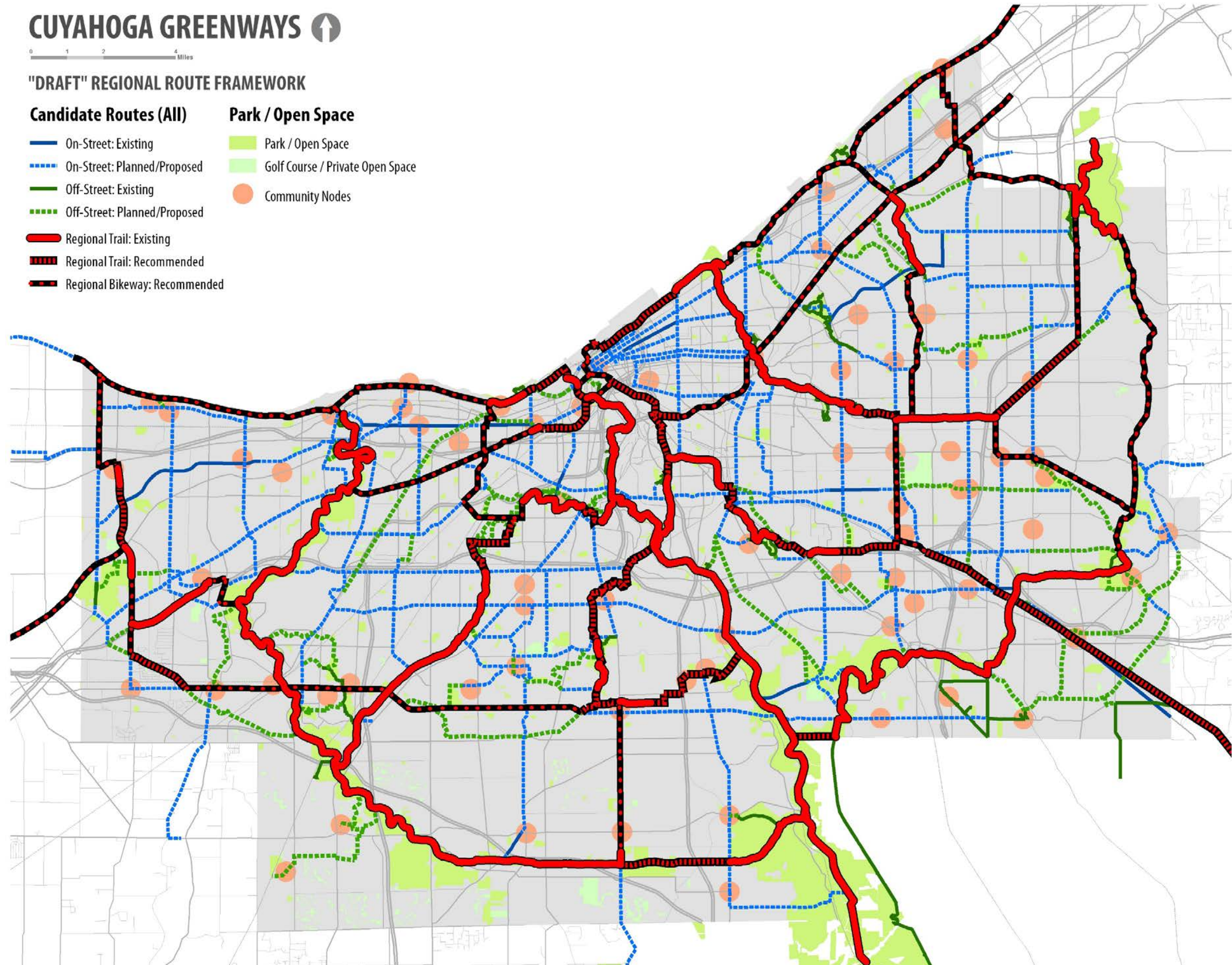
- Establish all purpose trails (e.g. Emerald Necklace Metorpark trails)

Regional Trails – Recommended

- Primarily filling gaps in the existing trail network (e.g. Lake Front, Downtown Connectors)

Regional Bikeways – Recommended

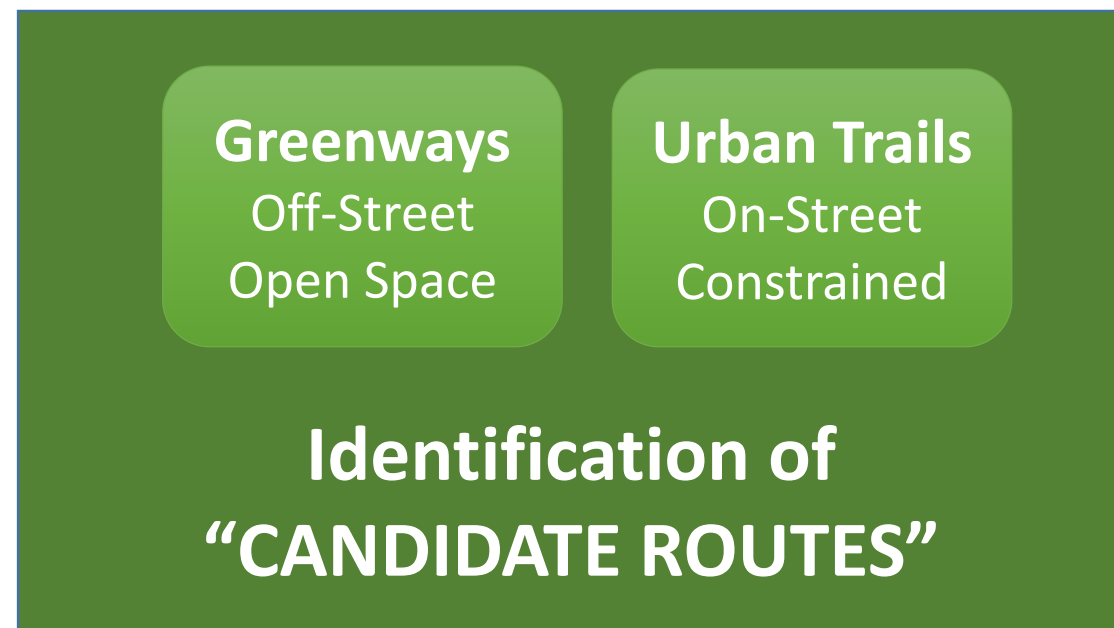
- Primarily within road corridor. Desire for separated facilities where feasible.
- May or may not be all-ages and all-abilities appropriate (e.g. Chagrin River Rd.)





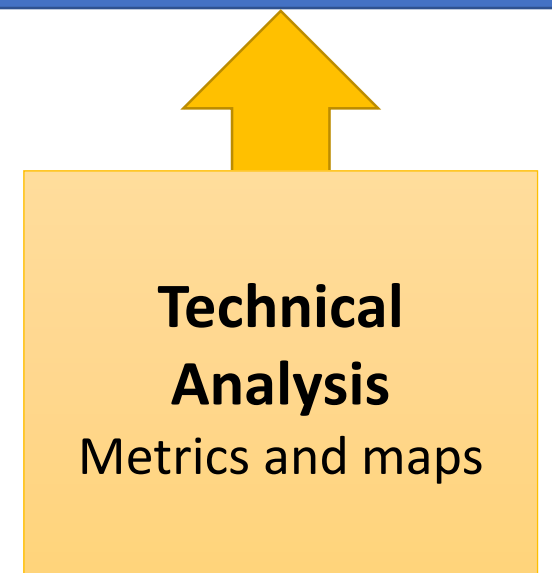
Planning process uses data and analysis resources to strengthen and empower stakeholder decision-making.

Where are the opportunities?



Priorities
Alignment with CIP
and other projects
Funding
Implementation

How well do candidates meet our goals?



EVALUATION CRITERIA



EQUITY

Socioeconomic Need

- Population served
- Equity & at-risk factors
- Car ownership

Physical Safety Need

- Crime
- Bike/Ped. Crashes

Health & Wellness Need

- Activity Levels
- Fitness participation

Open Space Need

- Locations where access to open space is low

CONNECTIVITY

“NETWORK FUNCTION” Opportunity

- Hierarchy (regional vs. local)
- Gap-filling (connects to existing facilities)

Access to Transit Services Opportunity

Experience Need

- Steep slopes
- Major road crossings

Open Space Opportunity

- Routes that link to open spaces

ECONOMIC

Community Asset Proximity Opportunity

- Jobs + Schools
- Retail / Entertainment
- Cultural Centers

Visual Character Needs

- Industrial, low-canopy cover, on major roadway

Opportunity

- Scenic, high-canopy cover

ECOLOGY

Habitat Protection Opportunity

- Within natural areas, riparian corridors, floodplains, etc.

Restoration Opportunity

- Proximity to natural land covers.
- Within/near vacant or underused land areas

Stormwater Opportunity and/or Need

- % Impervious cover
- Infiltration potential

Each box reflects a specific analysis.

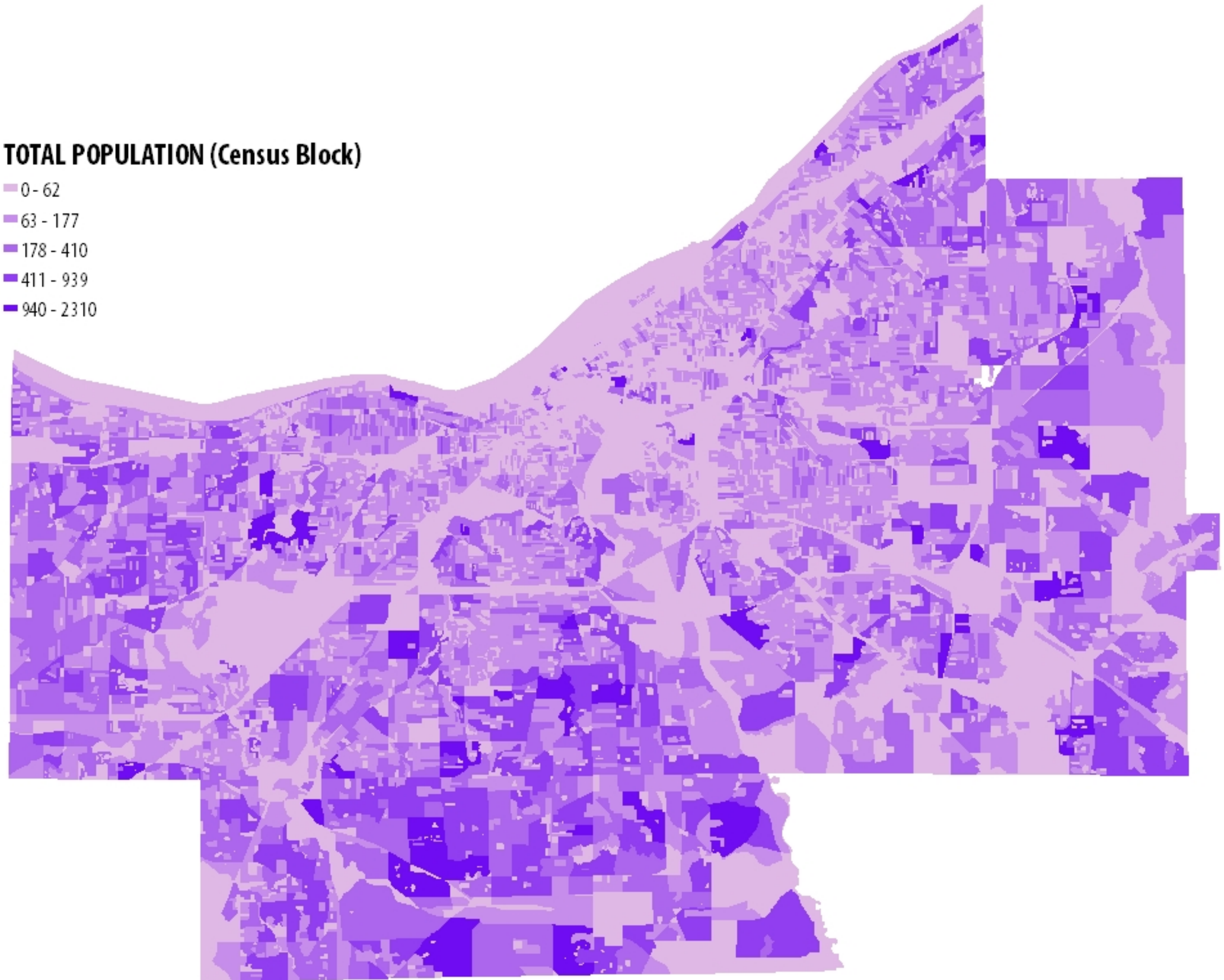


Step 1:

Map census
Population Data
(Block-level)

TOTAL POPULATION (Census Block)

- 0 - 62
- 63 - 177
- 178 - 410
- 411 - 939
- 940 - 2310





Step 2:

Translate into
quarter-mile grid
to determine
population density
(total population
per grid cell)

TOTAL POPULATION (1/4 Mile Grid)

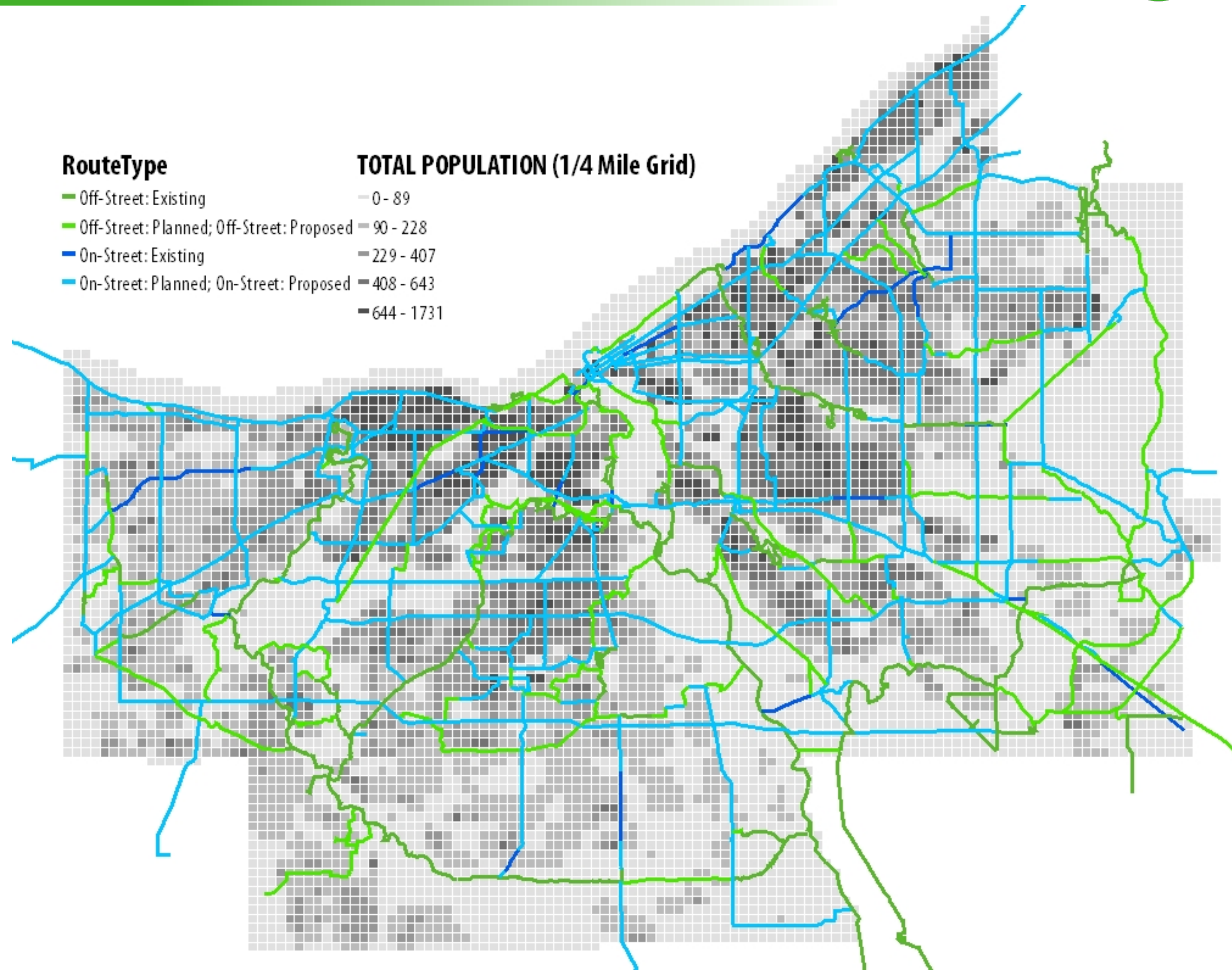
- 0 - 89
- 90 - 228
- 229 - 407
- 408 - 643
- 644 - 1731





Step 3:

Overlay candidate routes

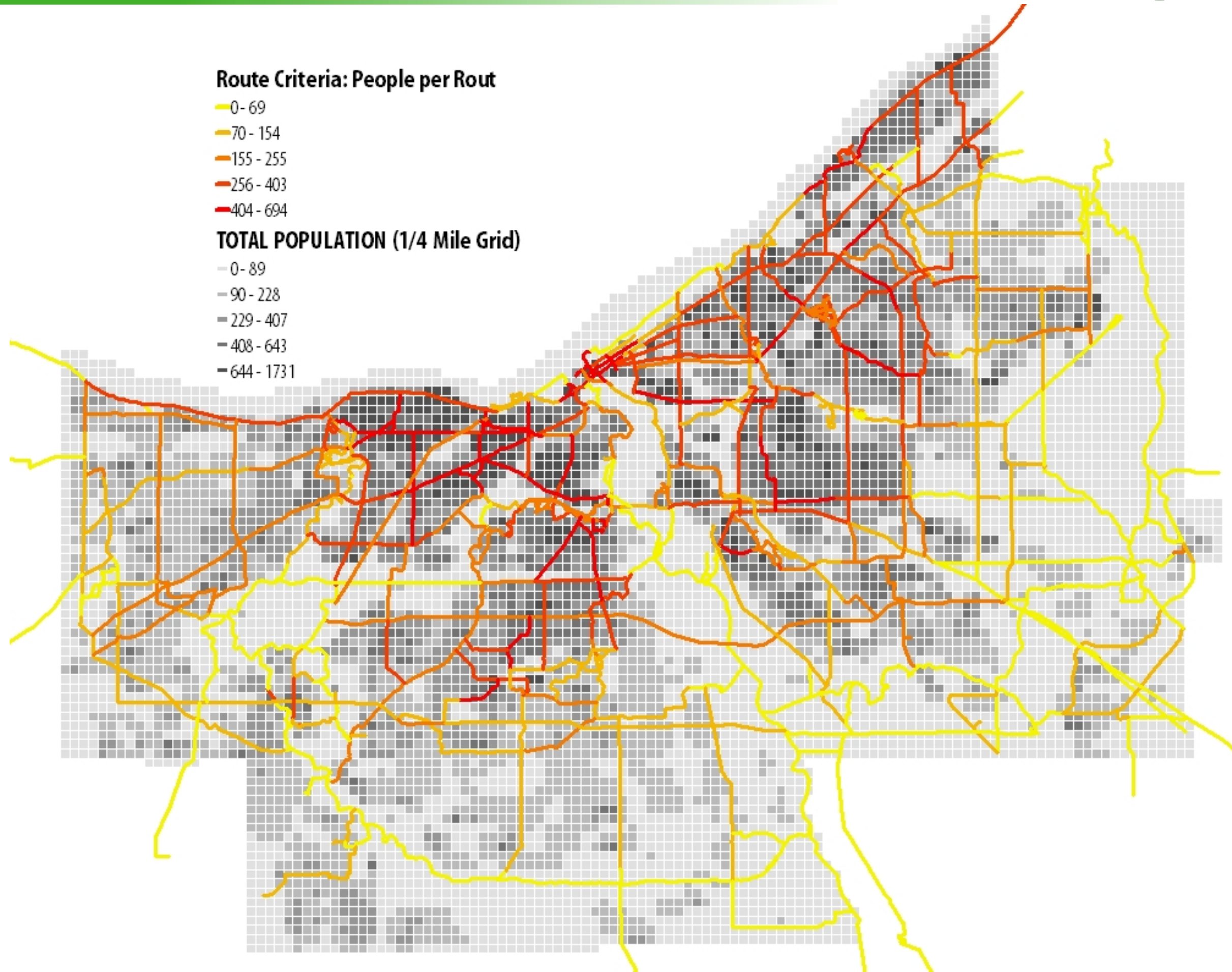




Step 4:

Determine total population along a route within a target distance (e.g. half-mile)

Calculate totals based on the route length to get average population density along the route.



HOW WILL THE EVALUATION BE USED?



ANALYSIS USED to inform
decisions (*not make decisions*)

Draw attention to areas of **need**
in the community

Draw attention to areas of
opportunity

Assess implementation
feasibility



A map of the Cuyahoga Valley area showing various greenways highlighted in green. The map includes labels for several municipalities: Brooklyn, Garfield Heights, Cuyahoga Heights, Brook Park, Brooklyn Heights, Parma Heights, Parma, Seven Hills, Independence, Valley View, Broadview Heights, Brecksville, Strongsville, and Berea. Major roads like the Airport Fwy, I-90, and various local streets are also labeled. The greenways are shown as winding paths through the landscape, connecting different parts of the region.

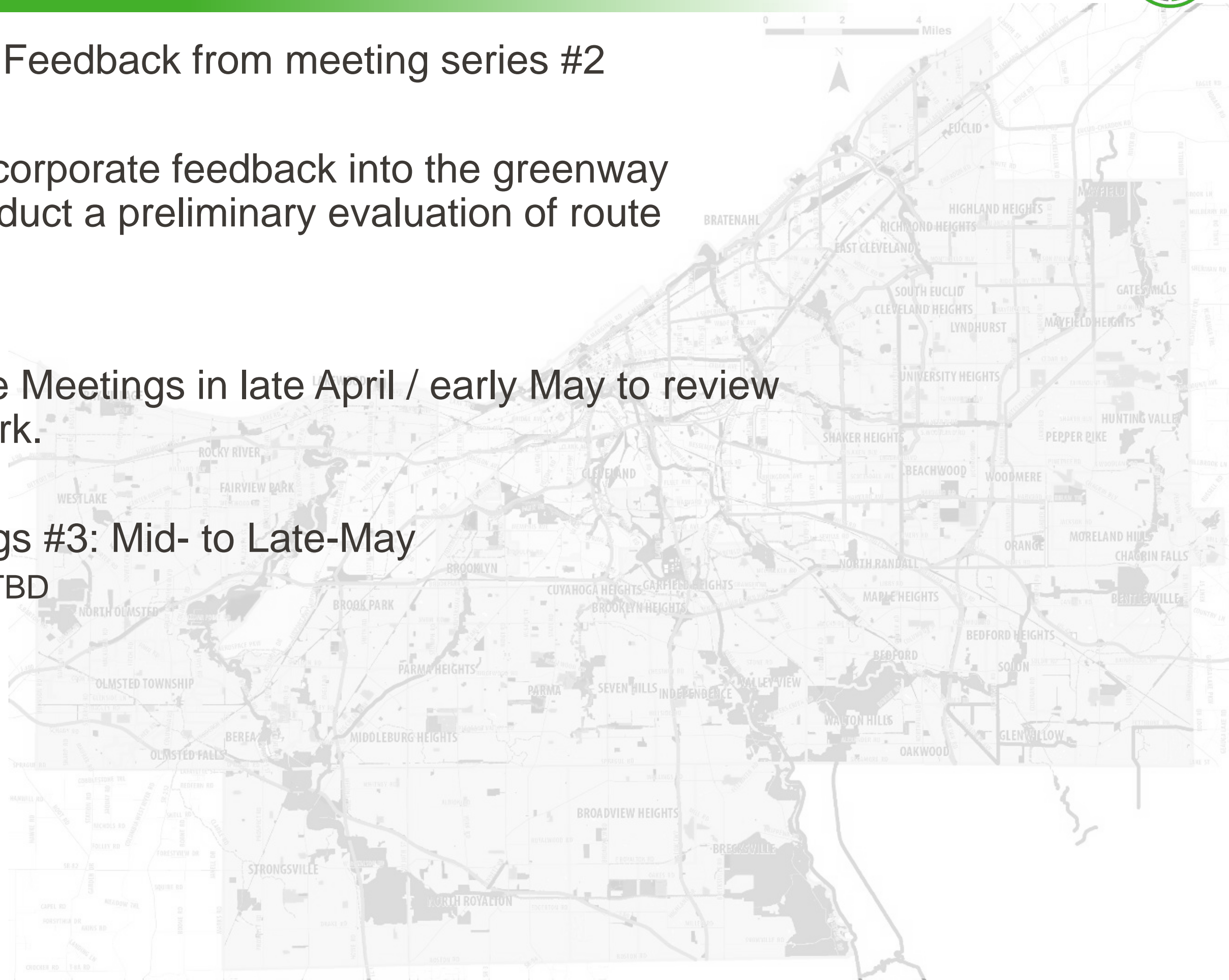
NEXT STEPS

Cuyahoga Greenways

NEXT STEPS



- Collect Community Feedback from meeting series #2
- Project team will incorporate feedback into the greenway framework and conduct a preliminary evaluation of route options.
- Steering Committee Meetings in late April / early May to review and refine framework.
- Community Meetings #3: Mid- to Late-May
 - Times and locations TBD





The **Cuyahoga Greenway Partners** is a **collaboration** to facilitate communication, keep focus and drive the **regional trail** effort raising the **visibility, prioritization, funding methods and implementation** of relevant actions in order to complete the **recreation, transportation-choice network**.

Active member organizations include:

- Bike Cleveland
- Cleveland Metroparks
- Cleveland Planning Commission (CPC)
- Cuyahoga County Board of Health (CCBH)
- Cuyahoga County Planning Commission (CCPC) and Public Works (PW)
- Cuyahoga Valley National Park (CVNP)
- Greater Cleveland Regional Transit Authority (GCRTA)
- Northeast Ohio Areawide Coordinating Agency (NOACA)
- Northeast Ohio Regional Sewer District (NEORS)
- Rails-to-Trails Conservancy (RTC)
- The Trust for Public Land (TPL)





THANK YOU